

Presentation begins: 6:30 p.m.

**If you have any questions about
the project, visit rem.info/en**



Pierrefonds-Roxboro station



Réseau express métropolitain

Virtual Information Meeting –
Pierrefonds-Roxboro

February 11, 2021

Réseau
express
métropolitain



Agenda



- Background
- The REM in Pierrefonds-Roxboro
- Upcoming work in 2021
- Noise barriers
- Communication tools
- Question period



Background

Réseau express métropolitain



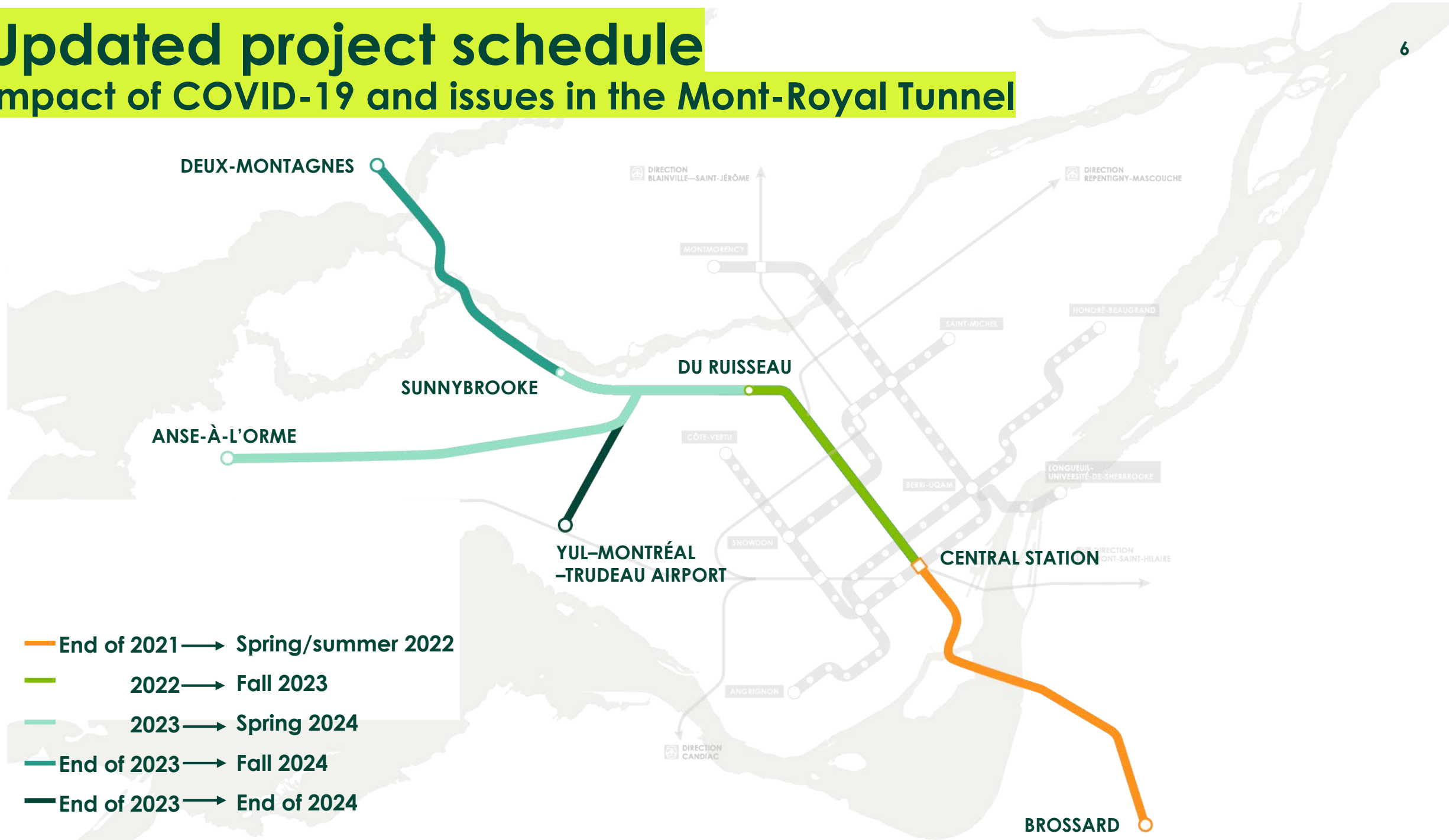
Largest public transit project in Québec in the last 50 years

Light rail
100% electric
and automated

26 stations, 67 km

Updated project schedule

Impact of COVID-19 and issues in the Mont-Royal Tunnel



The first cars unveiled





The REM in Pierrefonds-Roxboro

Station architecture



Lines to suggest **movement**

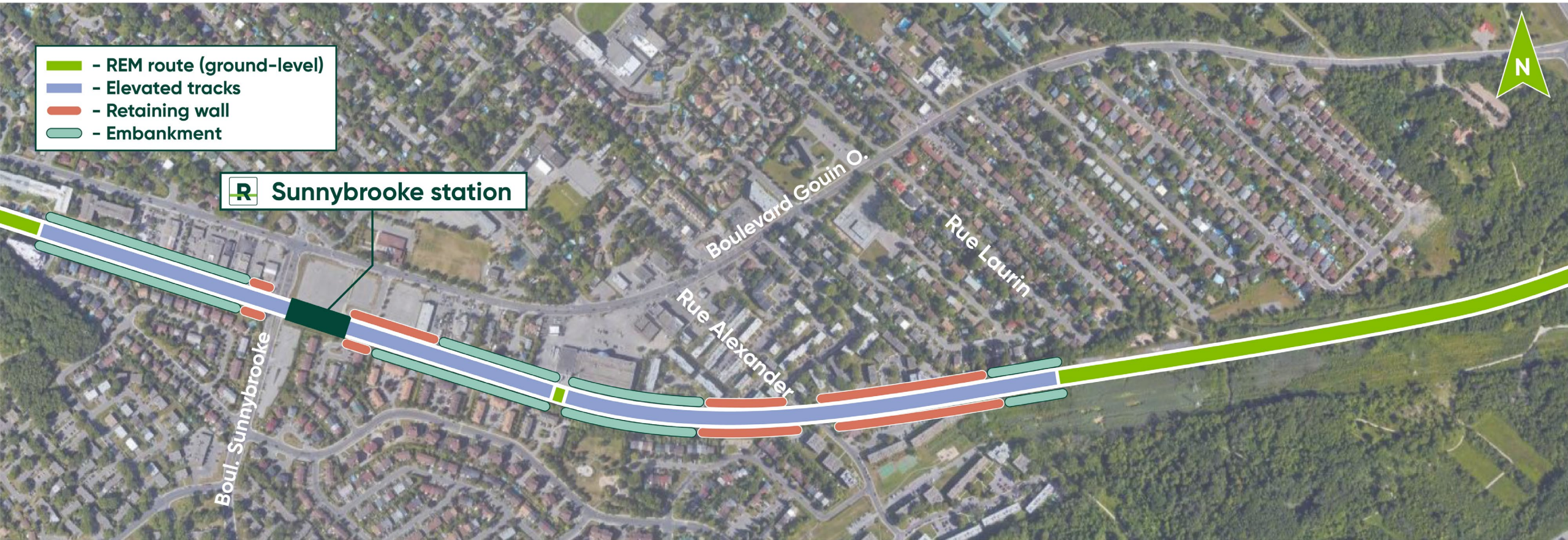
Glass for **transparency** and natural lighting

Wood for its **warmth** and as a hallmark

Blue to underscore the proximity of the Rivière des Prairies

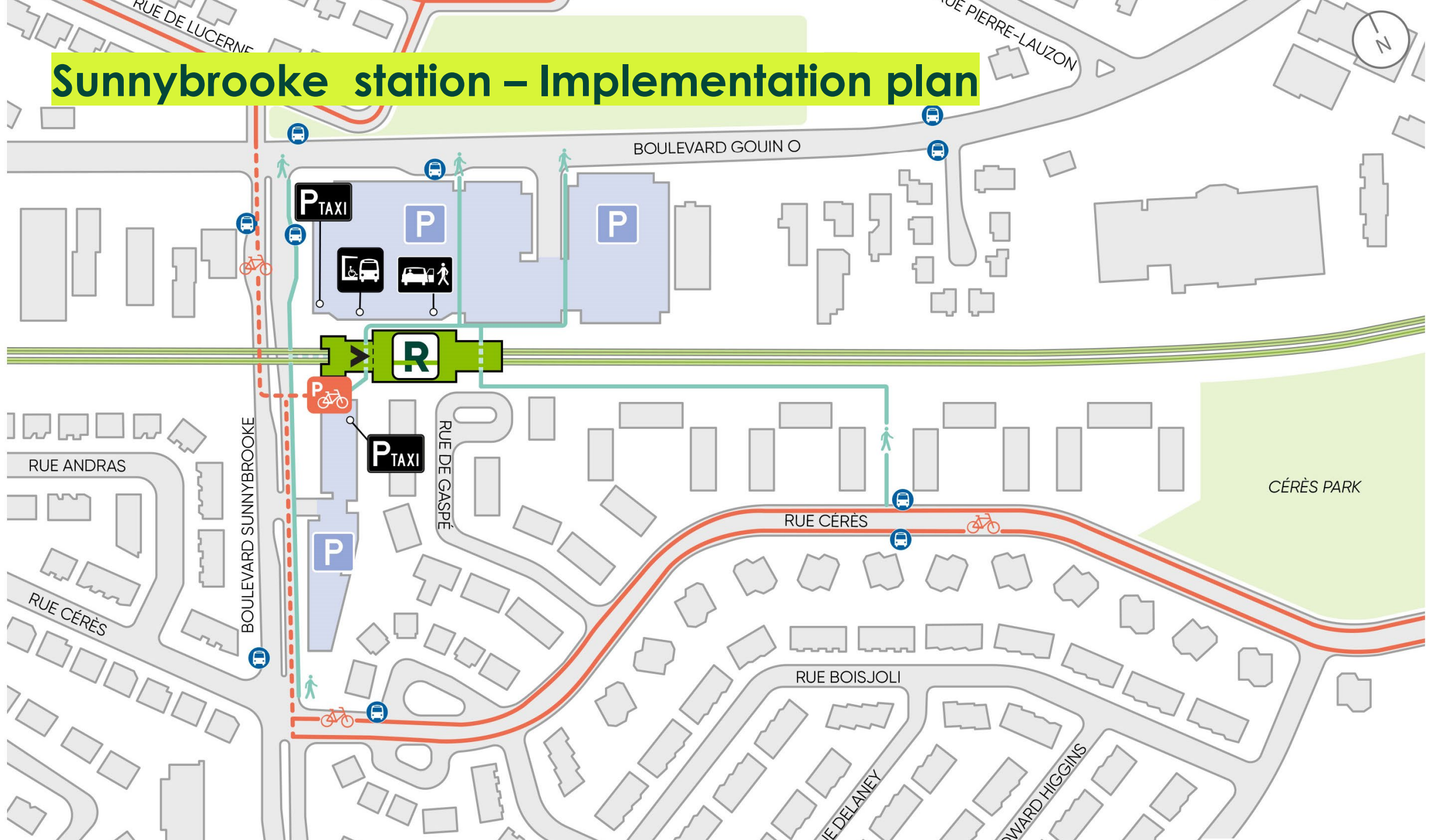


Sunnybrooke sector



FOR INFORMATION PURPOSES

Sunnybrooke station – Implementation plan

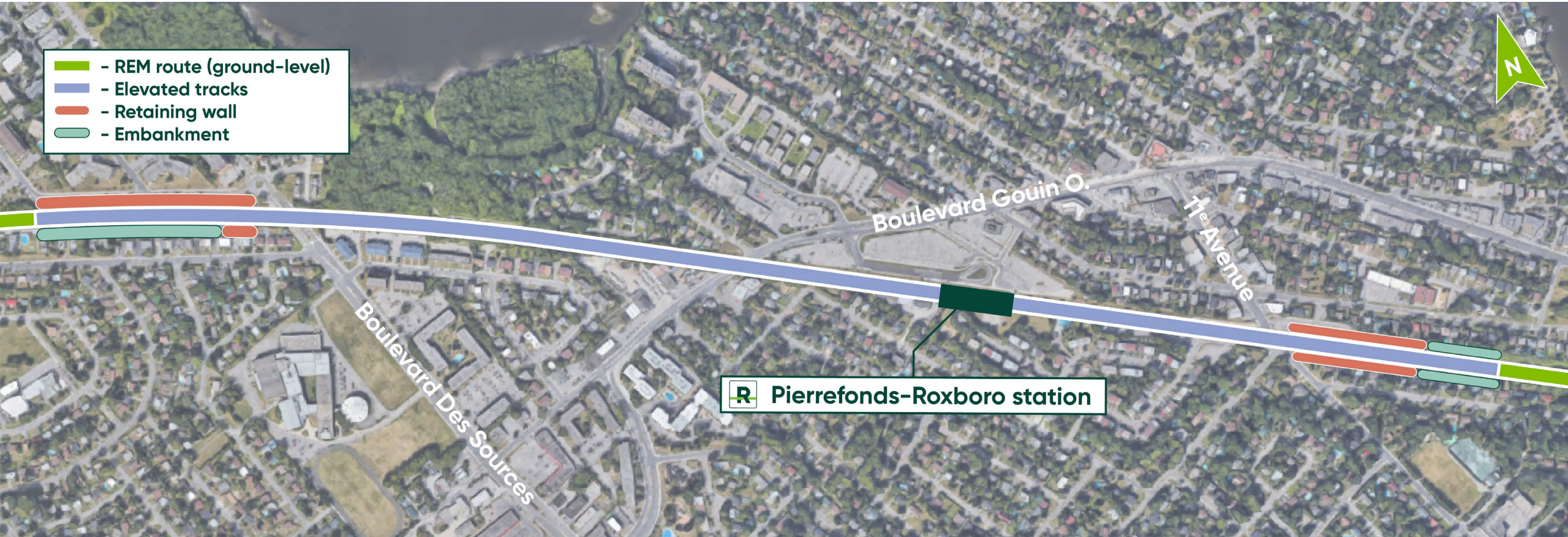


Sunnybrooke station



FOR INFORMATION PURPOSES

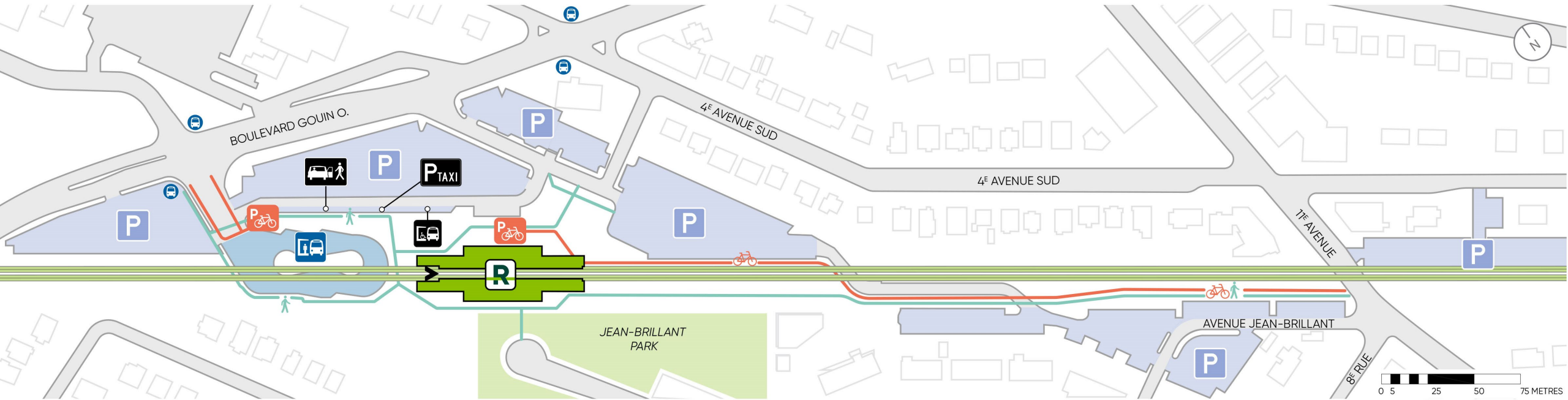
Pierrefonds-Roxboro sector



For information purposes



Pierrefonds-Roxboro station – Implementation plan



Pierrefonds-Roxboro station



FOR
INFORMATION
PURPOSES

Interior design



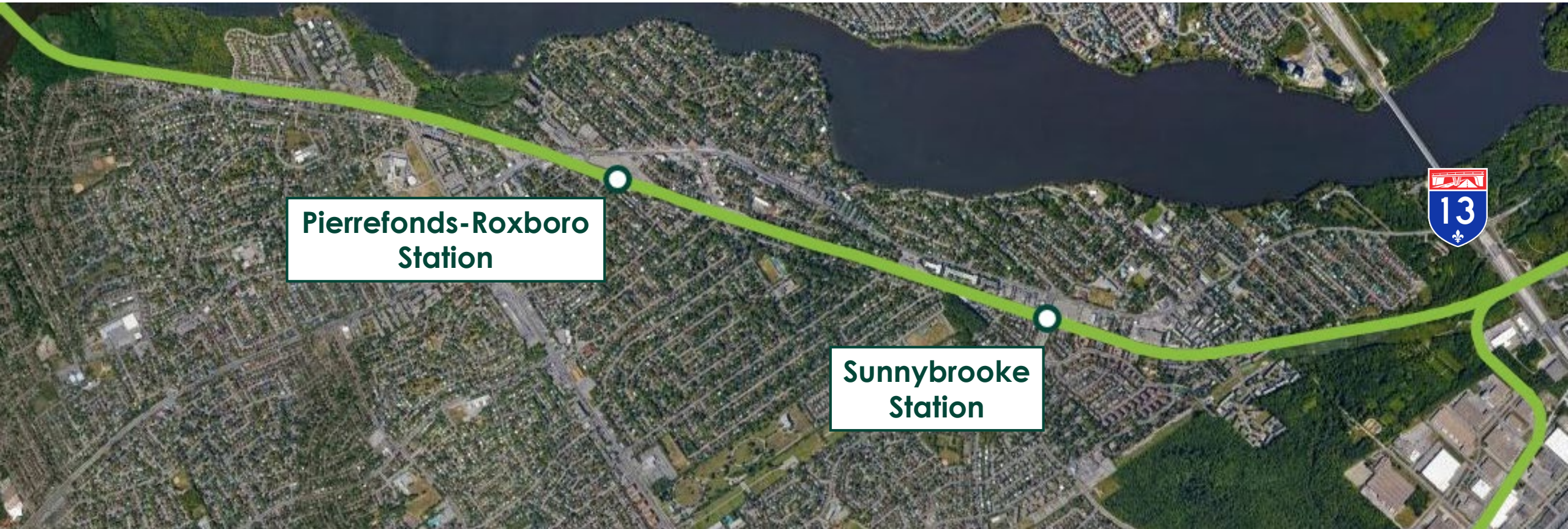
Bois-Franc station – FOR INFORMATION PURPOSES



Upcoming work in 2021

- Along the railway right-of-way
- Overhead crossings, elevated structure and railway bridge
- Construction of 2 stations

Along the railway right-of-way



Along the railway right-of-way



Removal of existing infrastructure – Starting February 2021

- Removal of the catenary system and its components, rails, platforms, etc.



Platform demolition – P.-Roxboro station

Installation of anti-intrusion fences



Objective: To ensure the necessary space for the doubling of the railway tracks

Spring 2021

- Dismantling of the existing fence, except on the 1.6-km elevated segment
- Reconstruction of the new fence at the railway right-of-way boundary



New anti-intrusion fence

In the Pierrefonds-Roxboro borough, the new double railroad tracks are located approximately 4 to 10 metres from the right-of-way boundary, depending on the location

Along the railway right-of-way

Reconstruction and doubling of the railway track – Starting May 2021

- Excavation and drainage
- Gradual installation of the new infrastructure
- Reconstruction of railway tracks (ground, embankment or retaining wall, depending on the location)
- Finalization of the repair work on the existing bridge in the Bois-de-Liesse nature park



Along the railway right-of-way

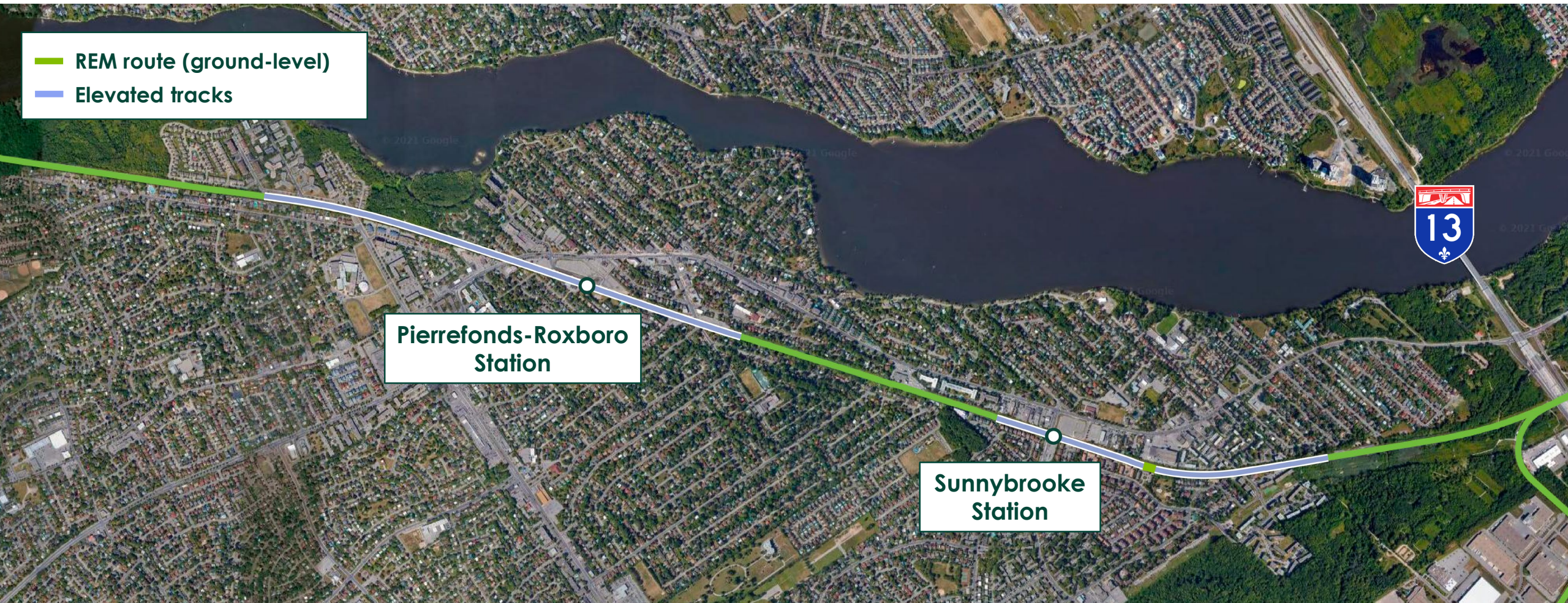


Vegetation cutting started – End of January 2021

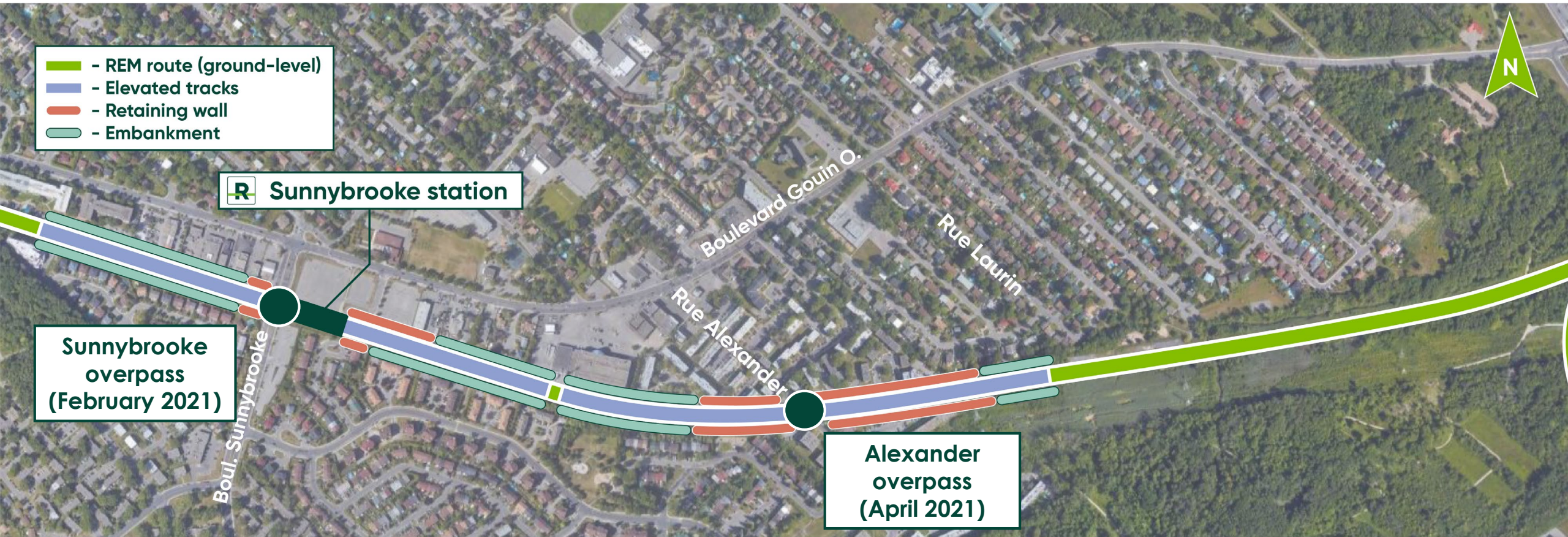
- Work required to make way for REM infrastructure, in particular:
 - Doubling of the railway track
 - Change of right-of-way fence
 - Station construction

Every effort are made to cut as little vegetation as possible

Convert 5 level crossings by raising the railway tracks



2 railway overpasses



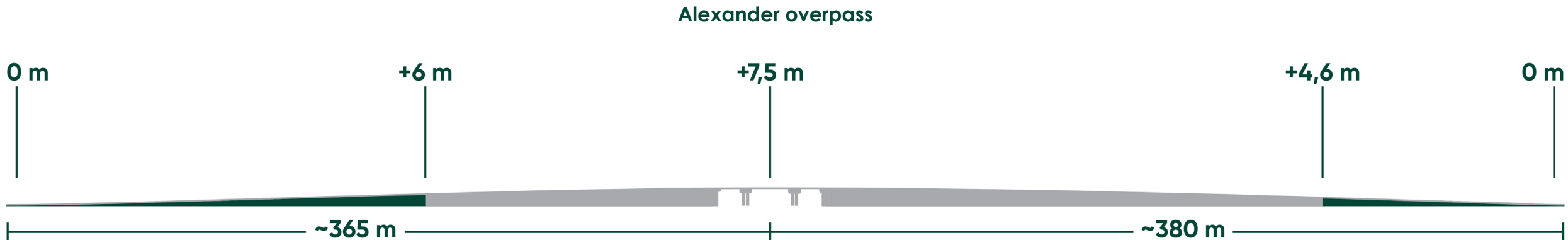
For information purposes

Construction of railway overpasses



Raised railway tracks to eliminate level crossings

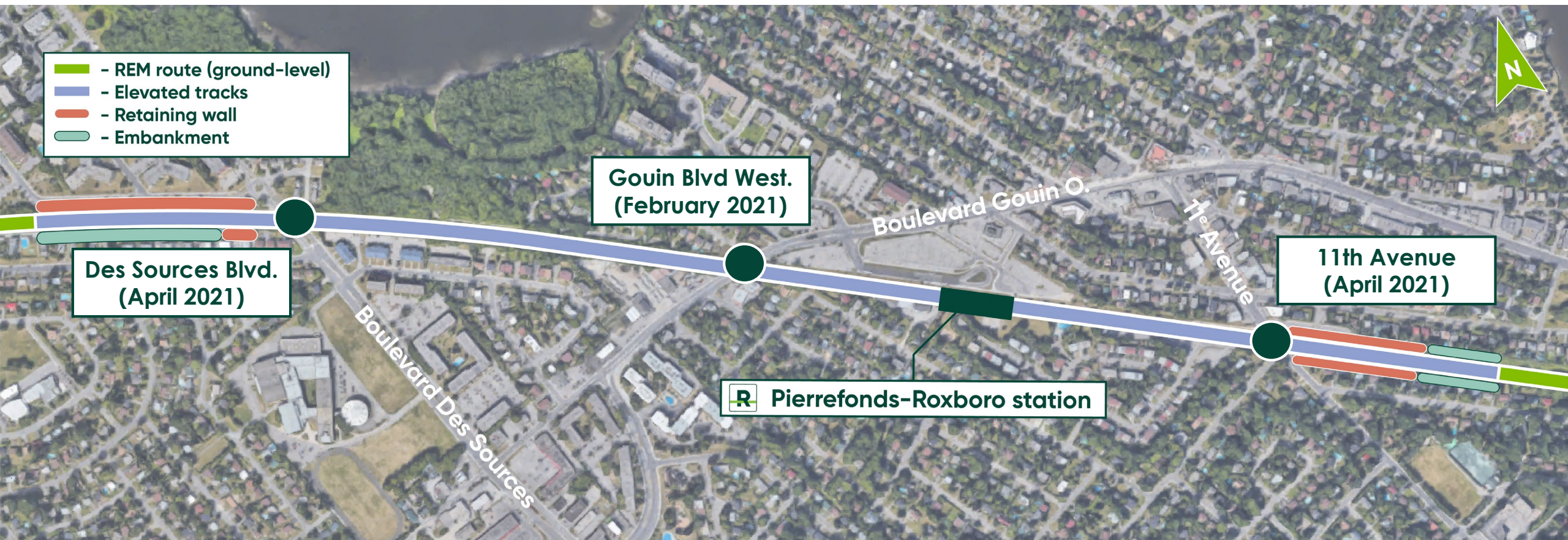
- Gradual ascent and descent
- Maximum height above the street: approximately 7.5 metres (including a 5.3-metre clearance under the structure)
- The approaches of the raised structures will be covered by a sloping plant embankment to mitigate their presence in the environment
- Traffic obstructions (5 to 9 months)



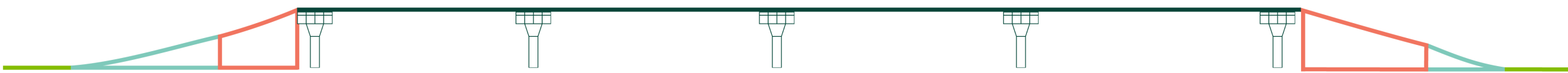


1.6 km of elevated structure





For information purposes

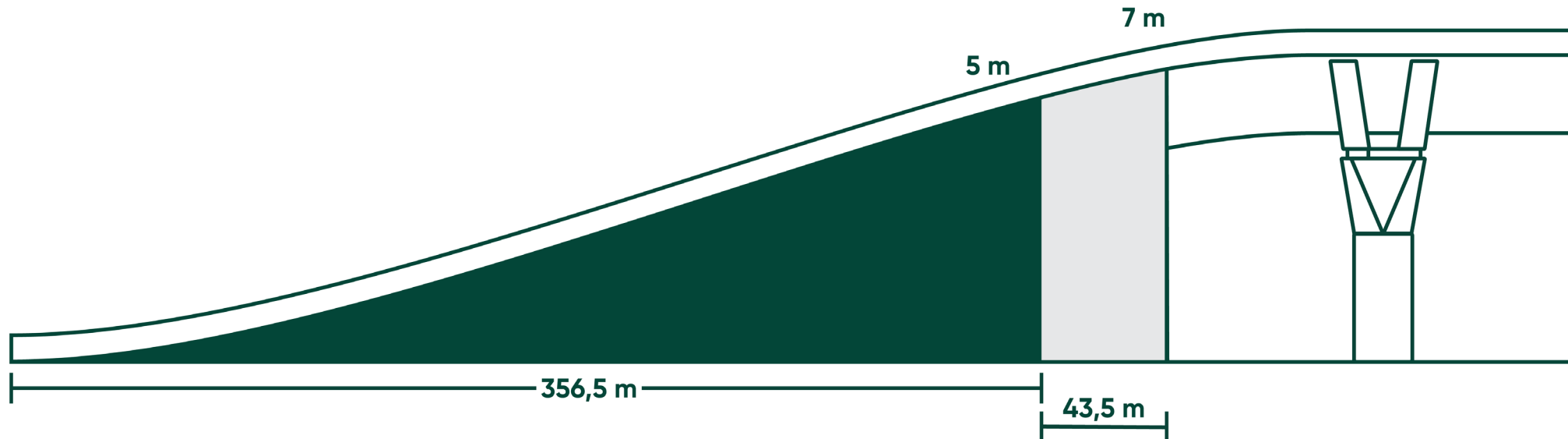


Construction of the elevated structure



Raised railway tracks to eliminate level crossings

- Gradual ascent and descent, east of 11th Avenue and west of Des Sources Boulevard, consisting of retaining walls and plant embankments
- Maximum height above the street: approximately 7.5 metres, including a 5.3-metre clearance under the structure
- Traffic obstructions (5 to 9 months)



Construction sequence of elevated structure



Starting February 2021



2022 – Duration: \approx 6 months



Launching
gantry

1 railway bridge

Rivière-des-Prairies 1

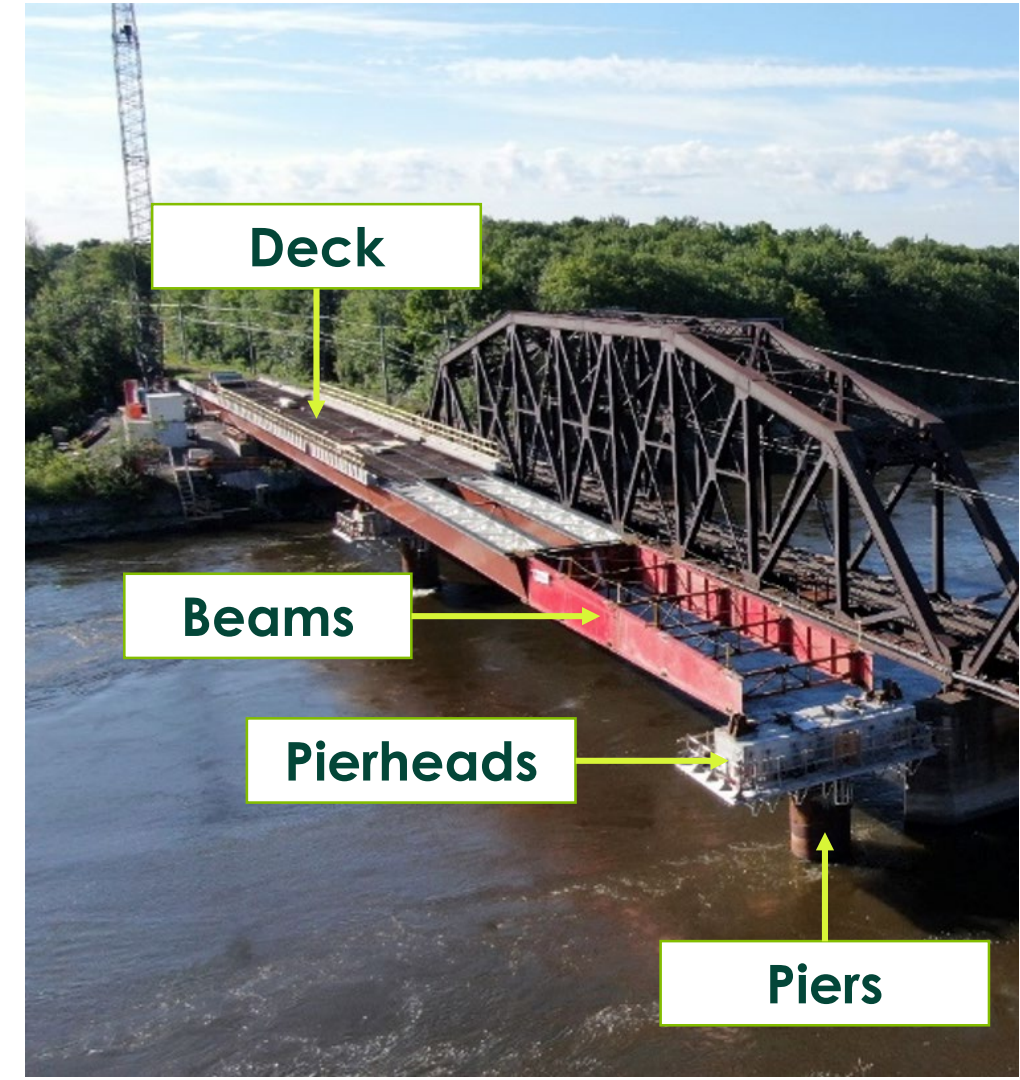


Rivière-des-Prairies 1 railway bridge



Construction of a new bridge next to the existing bridge

- Continuation of work on the south side of the shoreline (Du Celtis sector – Perron Street, Pierrefonds-Roxboro)
- Bridge retaining wall construction
- Installation of bridge structures (pierheads, beams, deck)



Pedestrian and bicycle crossing – Perron Street

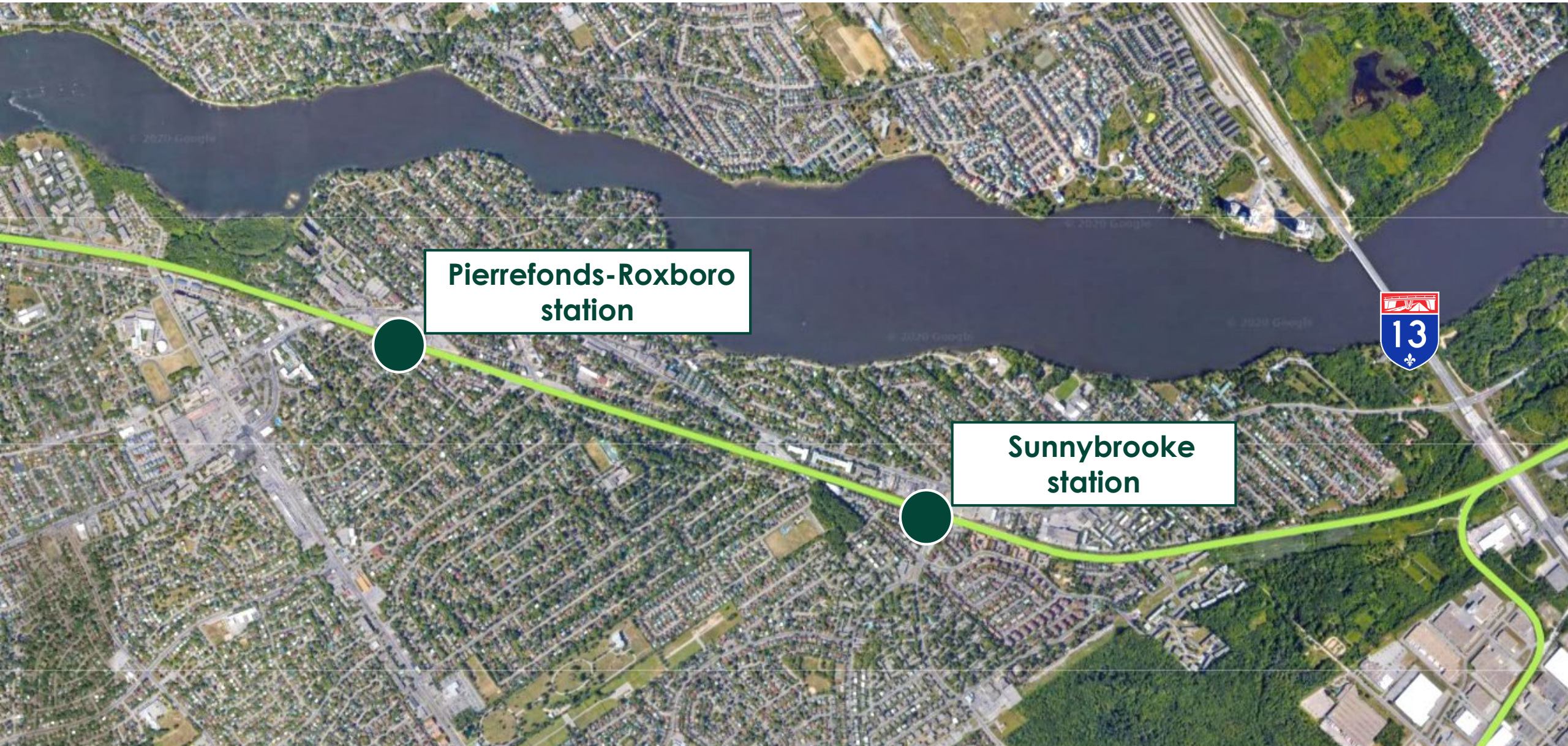


June 2021 – Construction of a railway underpass

- Installation of the pedestrian and bike path at Parc des Arbres
- Excavation and construction of crossing



2 stations



**Pierrefonds-Roxboro
station**

**Sunnybrooke
station**

Sunnybrooke station

Construction of the station

- Gradual installation of the site since January
- Excavation work
- Drilling of the station's foundations, etc.
 - Driving of 102 piles
 - Drilling of 7 caissons



Future station

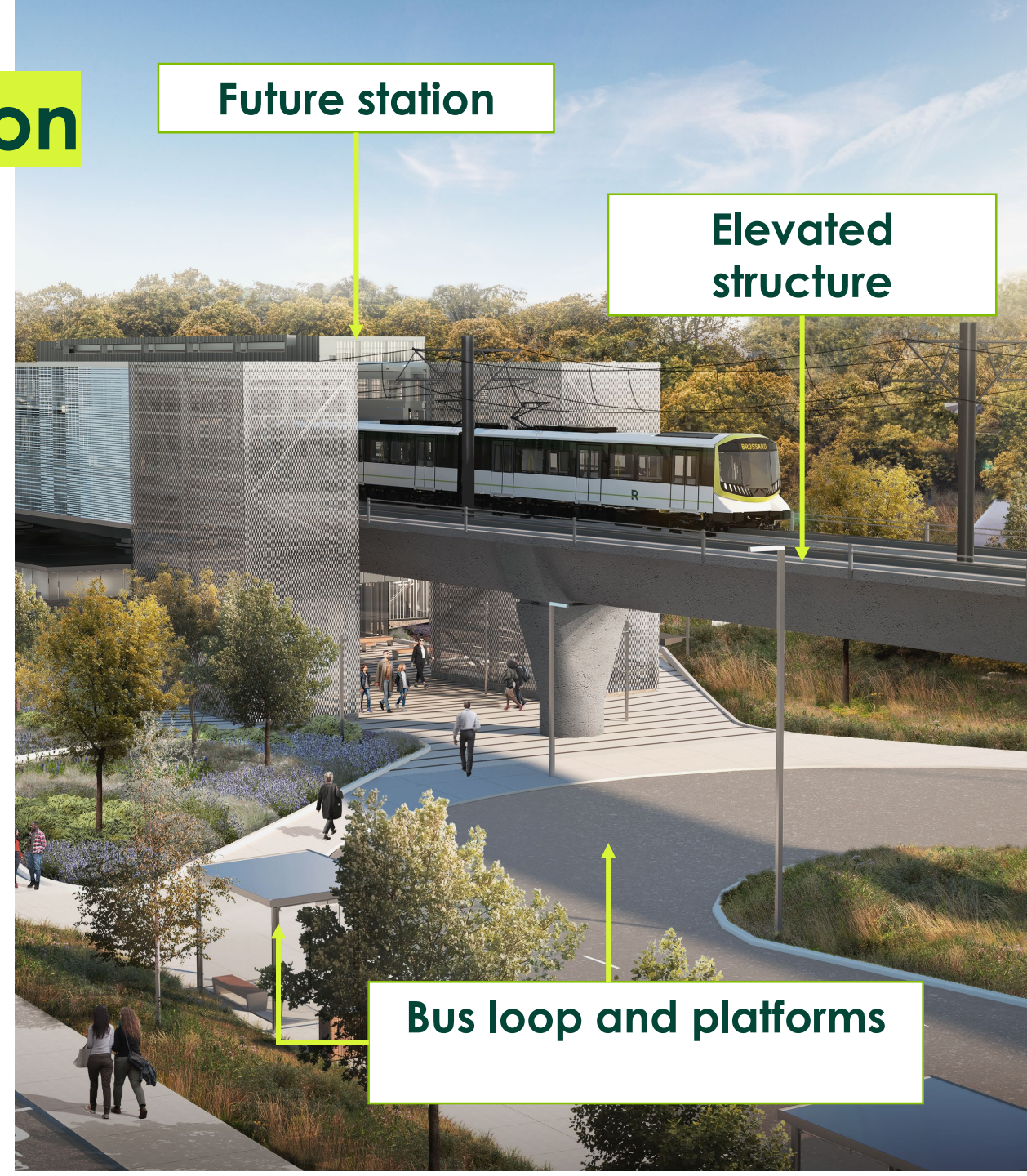
Railway overpass

Sunnybrooke Boulevard
reconfigured

Pierrefonds-Roxboro station

Construction of the station

- Installation of the construction site for transitional measures since January 2021
- Gradual installation of the site
- Excavation work
- Drilling of the station's foundations, etc.



Main anticipated impacts in 2021

Presence of a construction site near residential areas

- The work could cause noise, dust and vibrations
- Environmental monitoring (noise, vibration)
- Preventive residential inspections for vibration where required, before and after the work

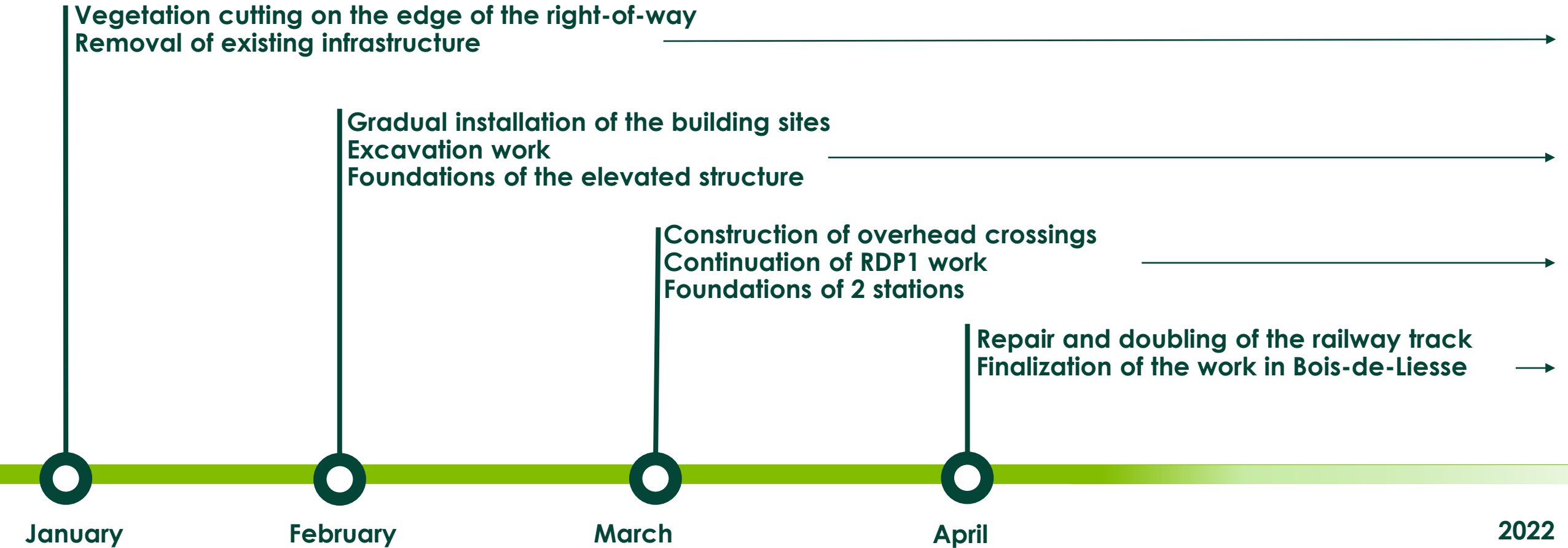
Impacts on mobility

- Transport of material
- Partial and complete closures
- Detours or detour lanes set up



2021 summary – Work schedule

Pierrefonds-Roxboro borough





Noise barriers

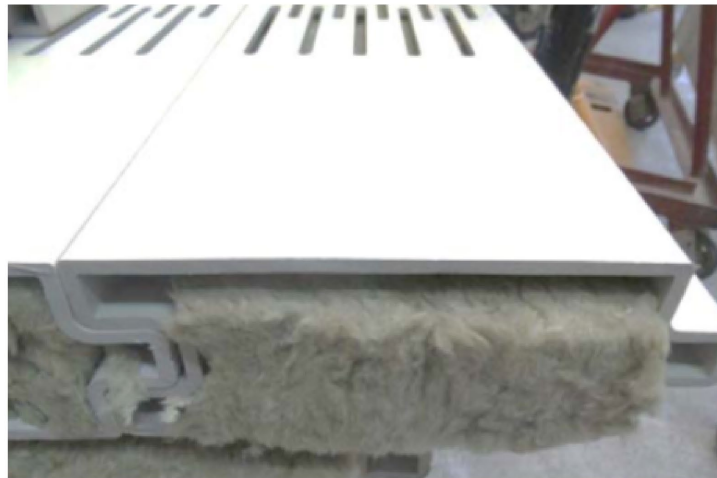
Noise barriers



- Installed at locations where significant impacts were identified by sound modelling
- Exterior: 100% PVC, white
- Interior: acoustic insulation
- Prefabricated panels, installed on steel posts



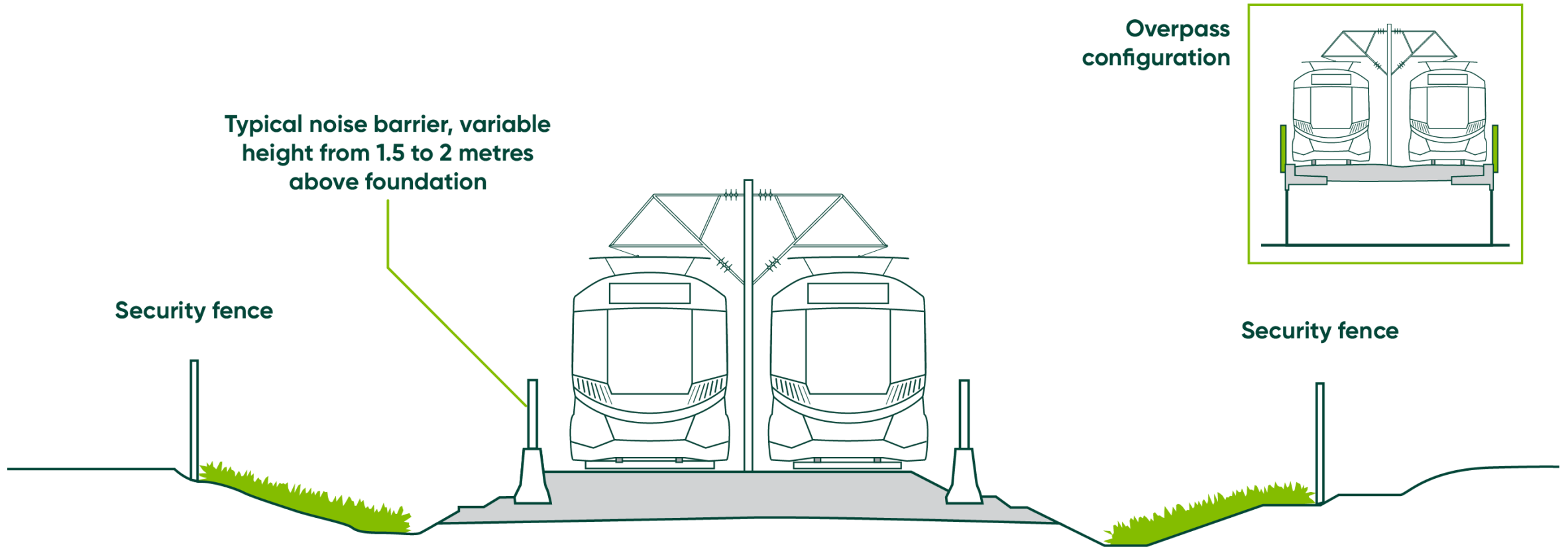
Railway face



Acoustic insulation



Cross-section – Sunnybrook sector

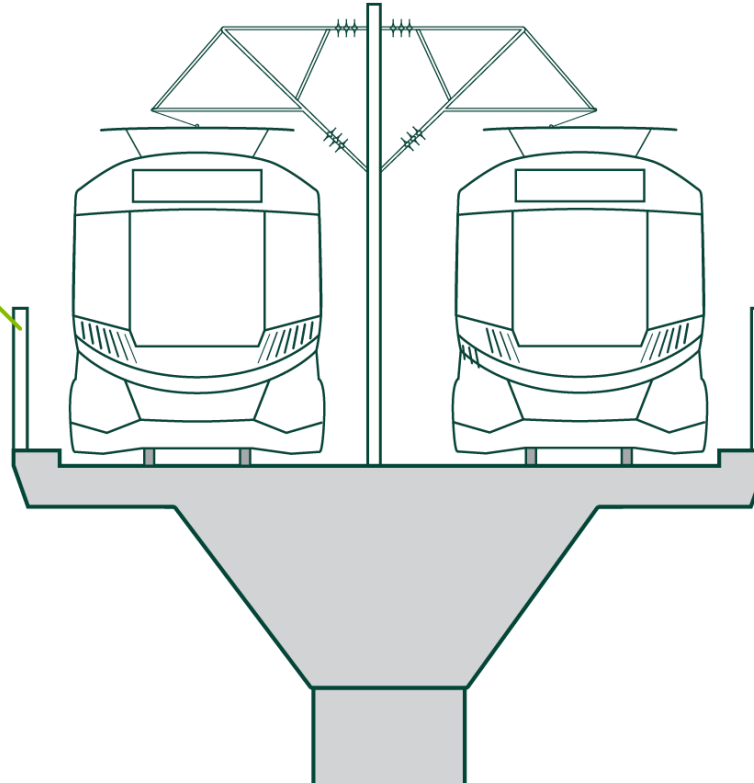


FOR INFORMATION PURPOSES

Cross-section – Pierrefonds-Roxboro sector



Typical noise barrier, variable
height from 1 to 1.5 metres
above decking

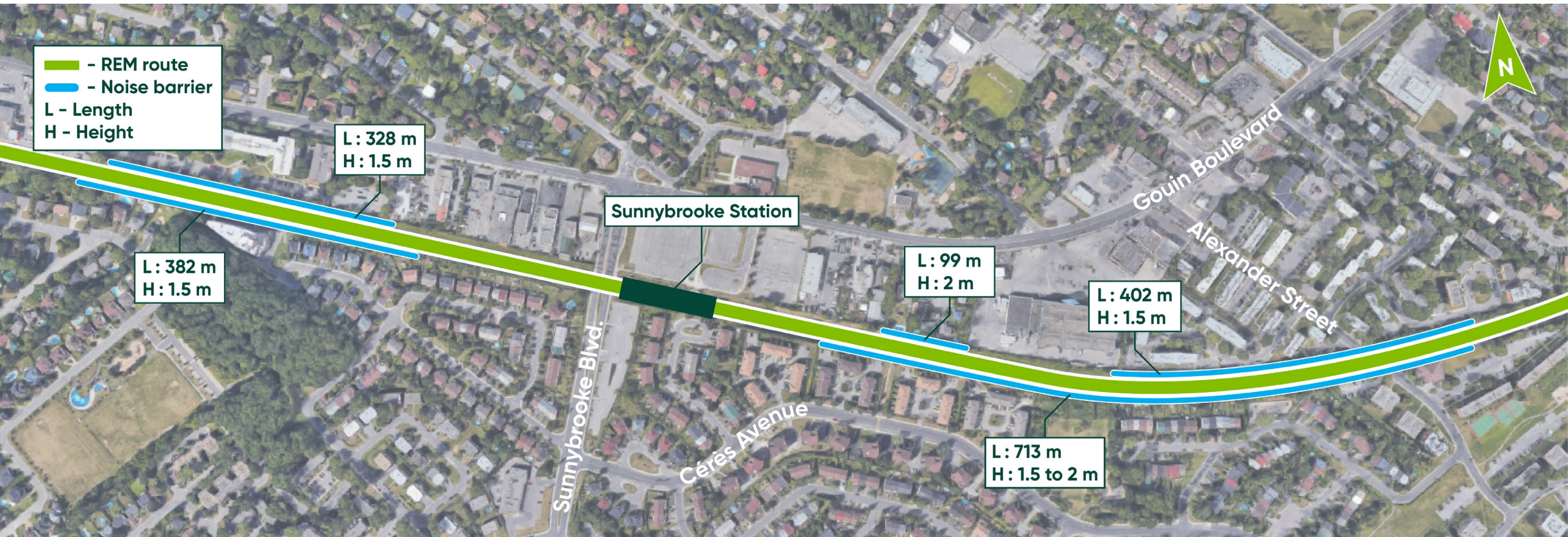


FOR INFORMATION PURPOSES

Location of noise barriers



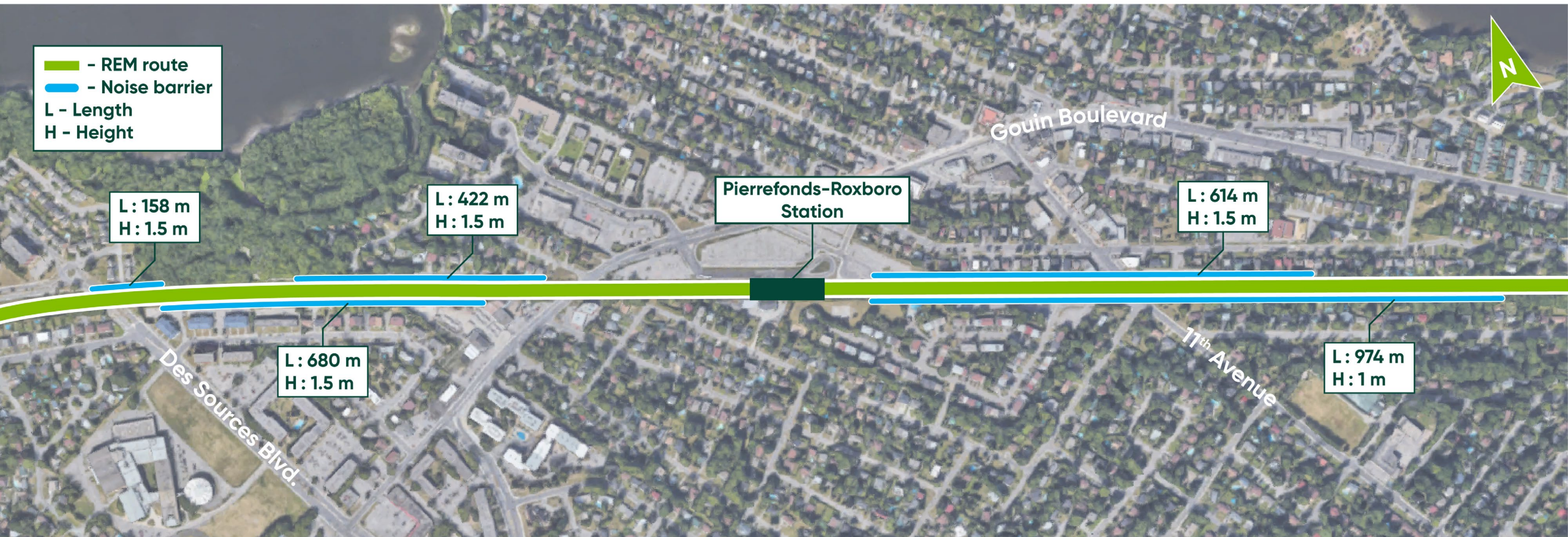
- Locations determined using conservative assumptions



Location of noise barriers



- Locations determined using conservative assumptions





Communication tools

For information on upcoming work



For any questions,
suggestions or
complaints

1 833 rem-info or
info@rem.info



Consult our works info
rem.info/en/works-info



Information in one place
rem.info/en/montreal-west



Subscribe to newsletters
for your sector
rem.info/en/newsletter



Question period



Live polling

Voting – Question 1



In your opinion, was the information provided on future work clear and complete?

- Yes
- More or less
- No

Voting – Question 2



What would you like more information on? Multiple choices.

- Work near the Sunnybrooke station
- Work near the Pierrefonds-Roxboro station
- Work near the RDP1 bridge (Du Celtis-Perron)
- The new Alexander and Sunnybrooke overpasses
- The elevated structure
- Noise barriers and sound modeling
- REM stations
- REM in operation
- The general progress of the project
- Other topics (specify in the question box))

Voting – Question 3



What are the best ways to inform the community about REM and the work ahead? Multiple choices.


- REM Newsletter
- REM.info - West Island Citizen Space
- REM.info - Work info map
- Postal delivery
- Public information meetings
- Exchanges with the neighbors of the work
- Rem-info phone line and email
- Local Newspapers

**Réseau
express
métropolitain**

 rem_metro

 REM – Réseau express métropolitain

 REMgrandmtl

 1 833 rem-info
(1-833-736-4636)

 info@rem.info

rem.info/en

