

For questions about the project, visit [rem.info/en](https://rem.info/en)

Presentation begins at:  
6:30 p.m.



# Réseau express métropolitain

## Public virtual information meeting

Sainte-Dorothée & Laval-sur-le-Lac area

October 24, 2022

Réseau  
express  
métropolitain



# Instructions

– Digicast platform



## Ask a question using your microphone + webcam

When asking a question verbally, click on the “**Have the floor**” button and an operator will redirect you to a virtual room for testing your audio and microphone.

Afterwards, you will be invited to ask your question to the speakers on-screen.



Conference video program

Presentation

Write your question





# Introduction of the experts

# Agenda



- Overview of the REM route and Sainte-Dorothée station
- Ongoing and upcoming work in Sainte-Dorothée and Laval-sur-le-Lac
- Available communication tools
- Question period

# The REM route in Sainte-Dorothée and Laval-sur-le-Lac

## Overview:

- Length of the route between Sainte-Dorothée and Laval-sur-le-Lac: approximately 2.5 km
- Elevated tracks bordered by embankments or retaining walls
- Frequency of passages between 5 and 15 minutes



# Sainte-Dorothée Station

## Overview:

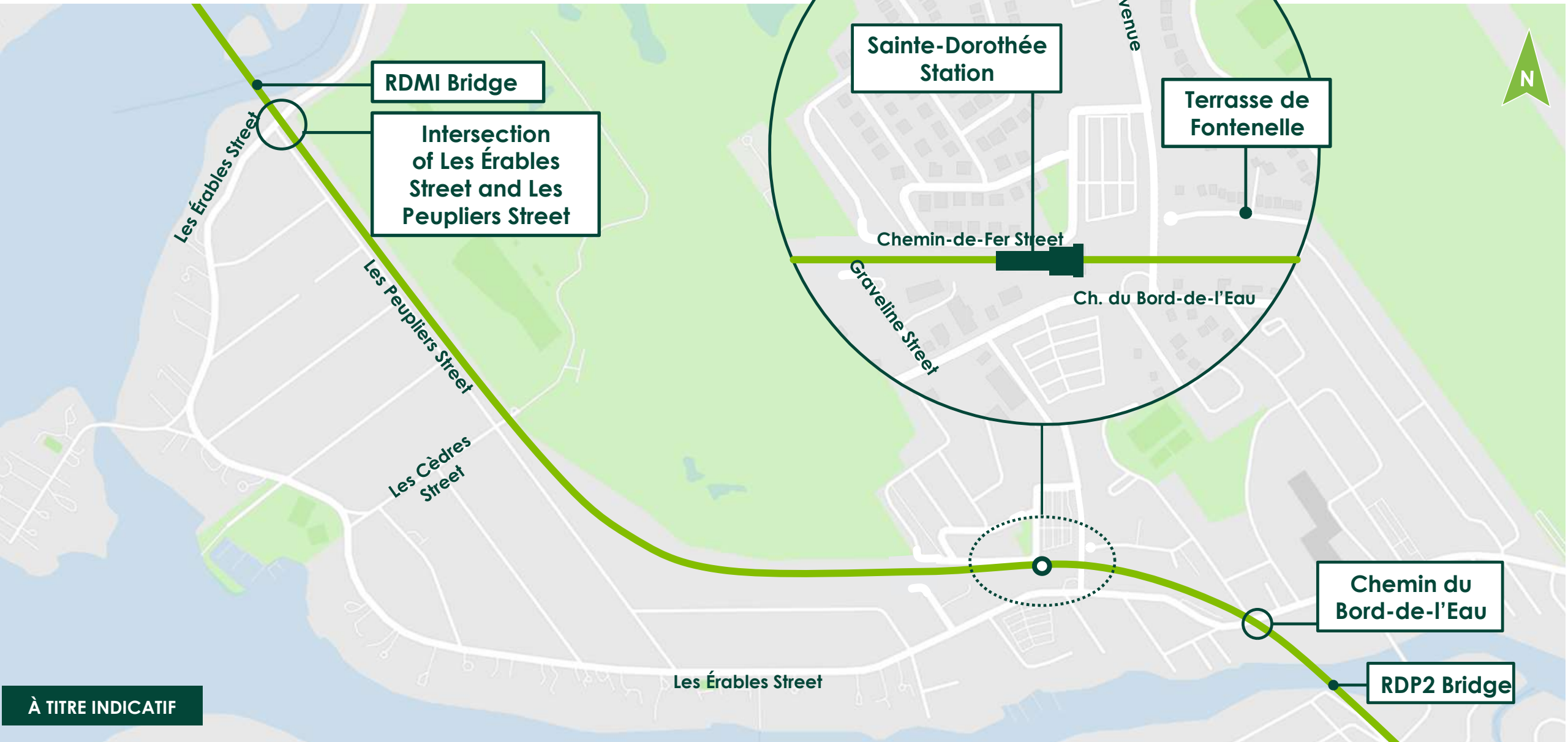
- Start of construction of the station: 2021
- Travel time to Central Station: 34 minutes
- Park-and-Ride: approximately 900 spaces
- Bicycle spaces: about 250, about half of which are in covered areas
- Universal accessibility for users
- Start of tests: early 2024
- Entry into service of the REM planned for the end of 2024





**Work completed, in  
progress and to come**

# Secteurs with upcoming work



# Rivière-des-Prairies-2 Railway bridge

## Completed work :

- Entire bridge

## Ongoing work:

- Installation of new rails



# Chemin du Bord-de-l'Eau Railway bridge

## Completed work:

- Entire bridge

## Upcoming work:

- Local interventions
- Installation of new rails



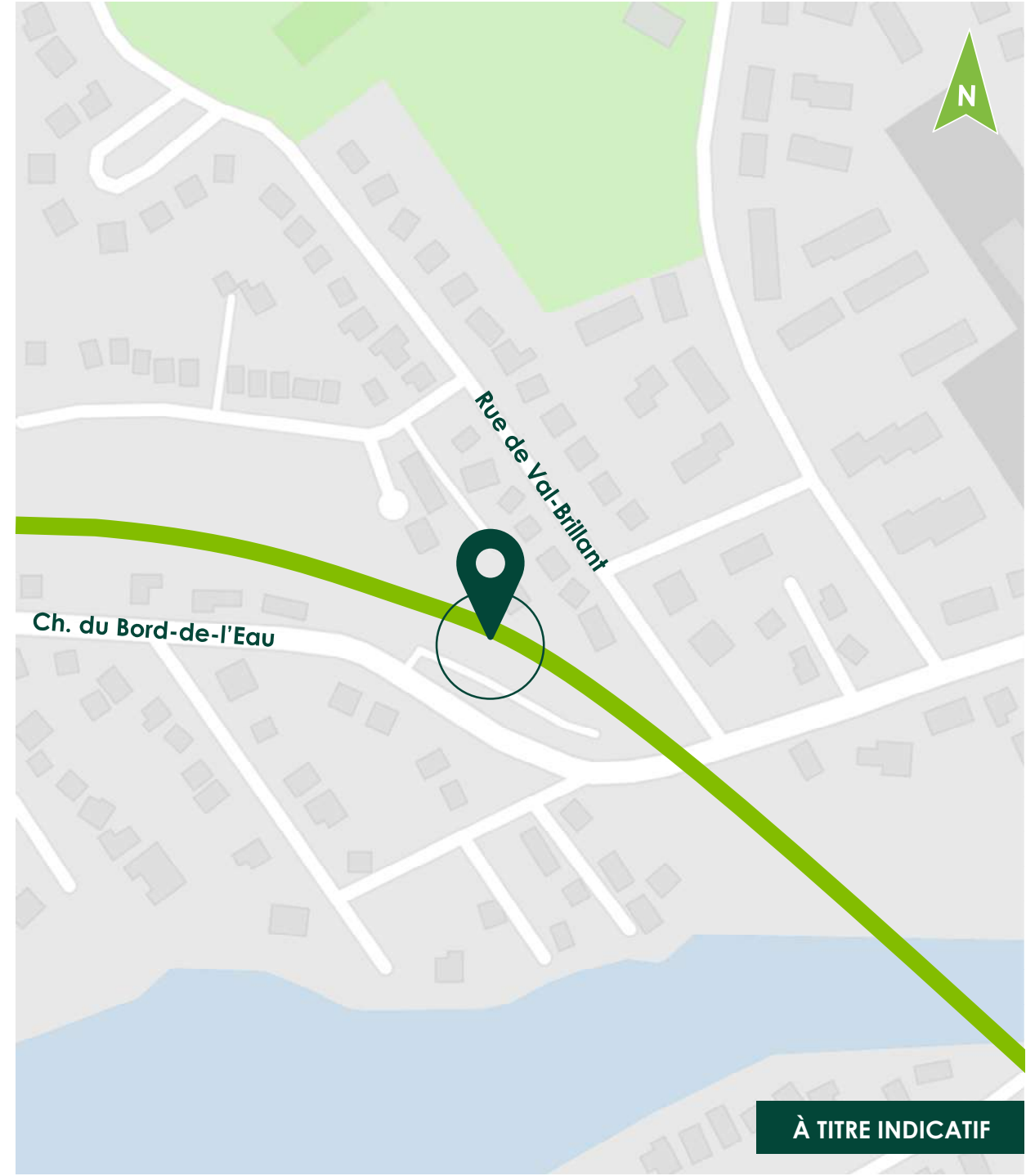
# Along the route, forward Sainte-Dorothée

## Completed work:

- Construction of embankments
- Drainage works
- Foundations for permanent noise barriers

## Ongoing and upcoming work:

- Installation of new rails
- Installation of permanent noise barriers
- Installation of anti-intrusion fences



# Sainte-Dorothée station

## Completed work :

- Installation of curtain walls
- Construction of retaining walls

## Ongoing and upcoming work :

- Installation of curtain walls
- Interior mechanical and electrical work
- Exterior improvements (parking lots, landscaping, finishing work around the station) \*in 2023\*



# Streets surrounding the station

## Completed work :

- Dead end of Graveline Street
- Connection of Des Bois Avenue with Chemin du Bord-de-l'Eau

## Upcoming work:

- Final layer of paving on Terrasse de Fontenelle
- Removal of temporary path between Terrasse de Fontenelle and Des Bois Avenue



# Realignment of Gobeil Street with Des Bois Avenue

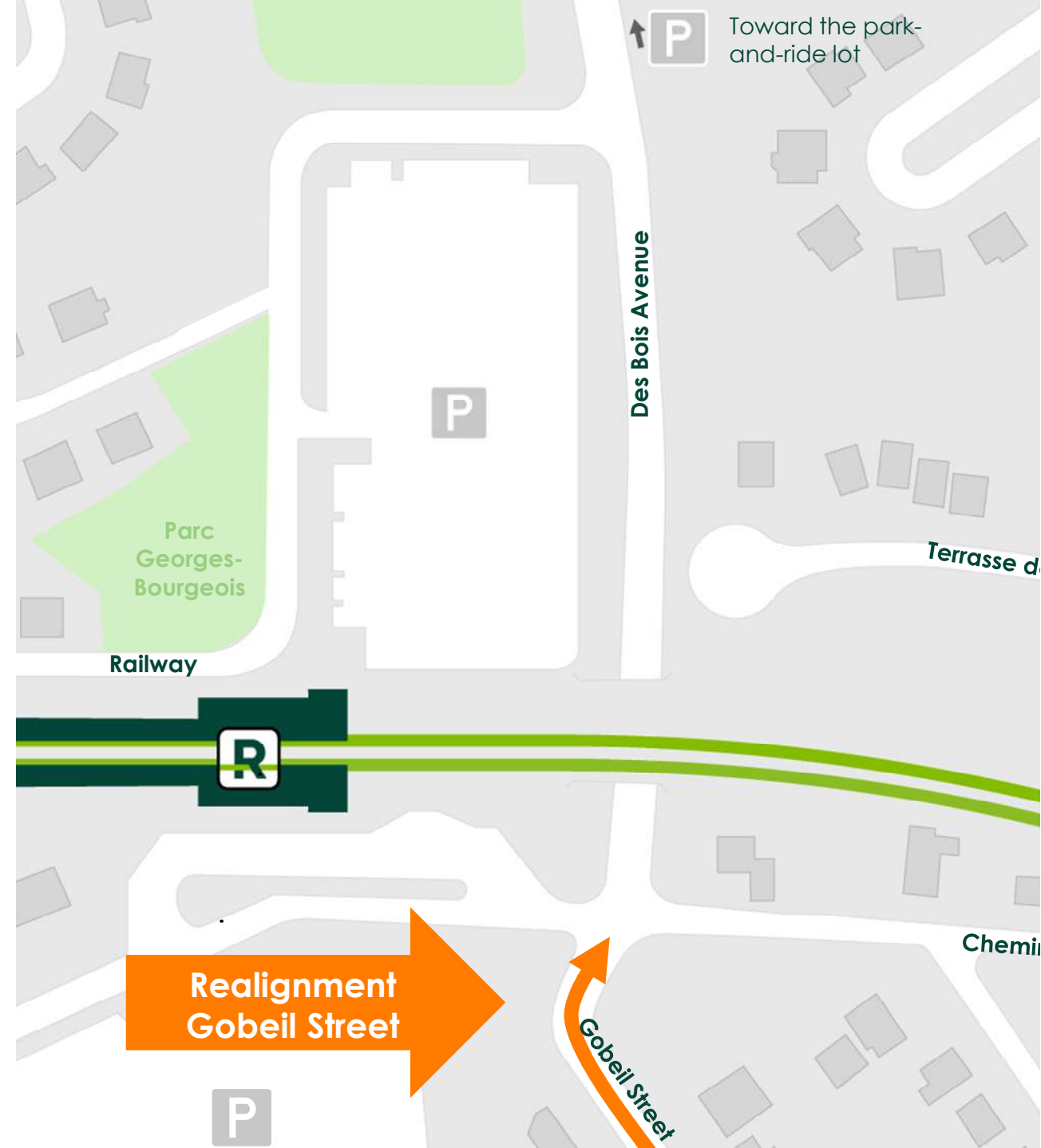
## Completed work:

- Cutting of vegetation for the future street alignment

## Upcoming work:

- Archaeological excavations
- Utility relocation (winter 2023)
- Demolition and realignment of roadway (spring 2023)

No work in progress



REM - Construction of REM in Laval-sur-le-Lac

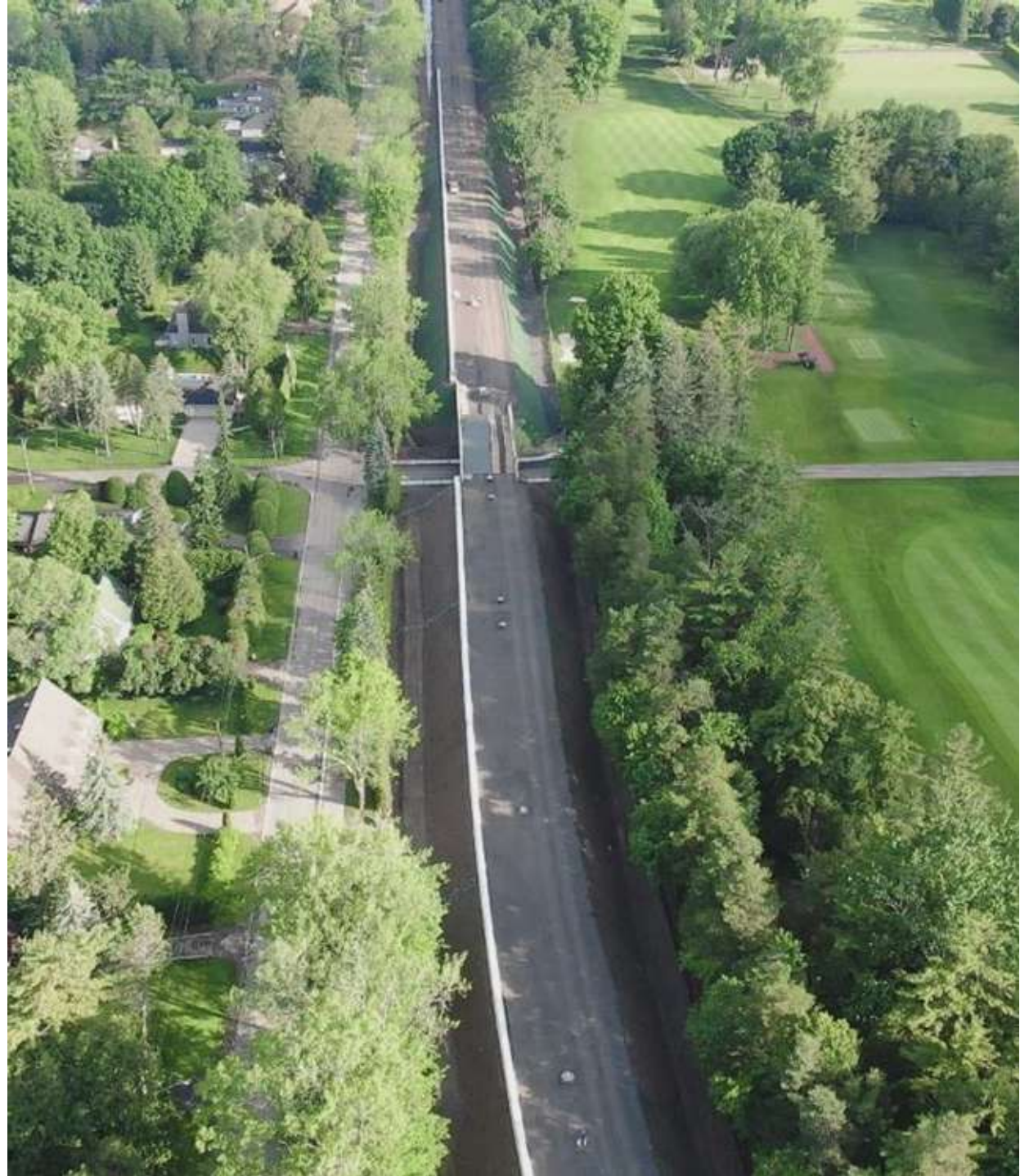
# Along the route, forward the Rivière des Milles îles

## Completed work:

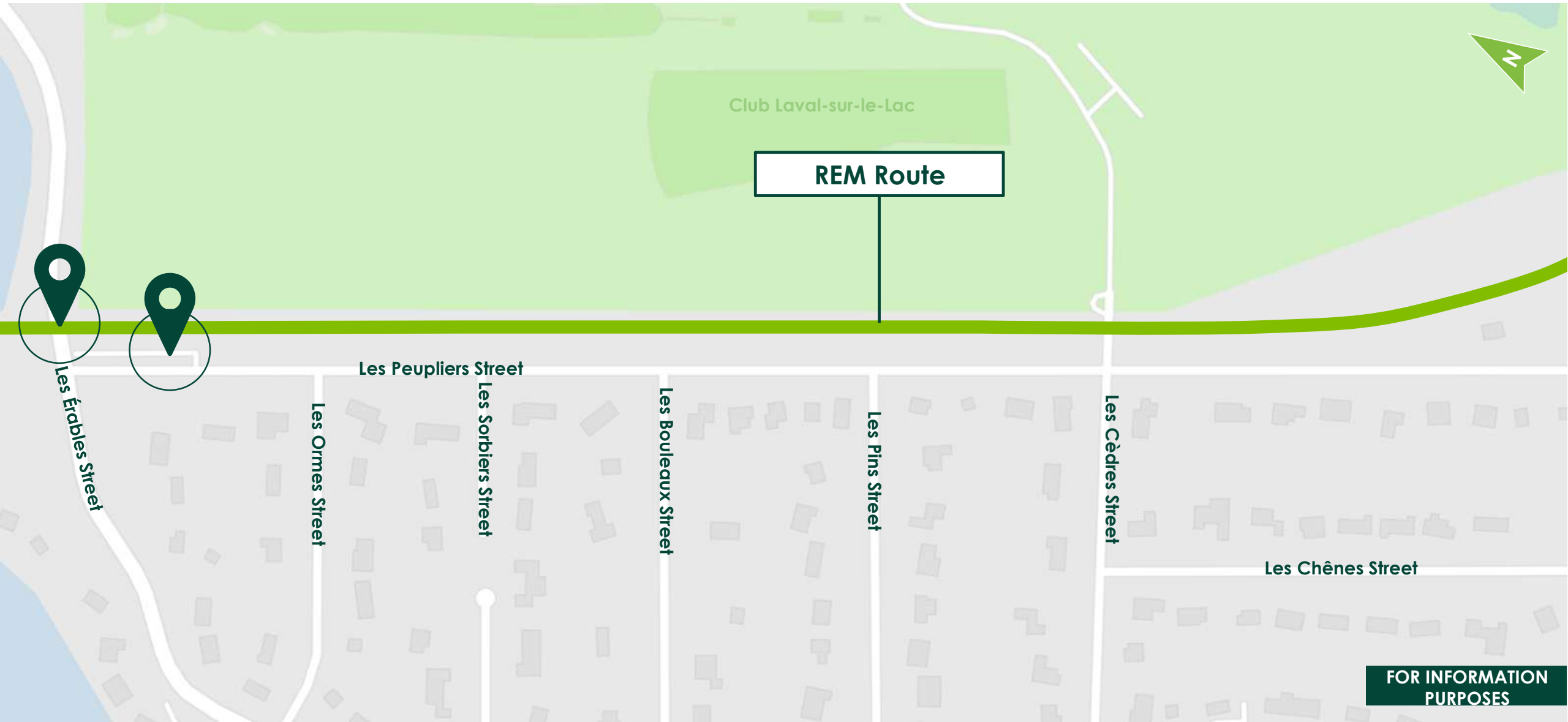
- Drainage works
- Construction of retaining walls and embankments
- Installation of foundations for permanent noise barriers
- Installation of anti-intrusion fences

## Work in progress and to come :

- Installation of new rails
- Installation of permanent noise barriers



# Lowering of roadways, Laval-sur-le-Lac



# Lowering of roadways, ongoing



**Elevated railroad  
tracks**

**Lowering by  
2.4 m at the  
lowest point**

**Lowering of Les Peupliers Street to  
connect it with Les Érables Street**

**Lowering of Les  
Érables Street**

**FOR INFORMATION  
PURPOSES**

# Extension of obstructions

## Les Érables Street and Les Peupliers Street

### **Background:**

- Raising of a portion of Les Érables Street required by the Direction générale des barrages, which was completed late, after the street was designed:
  - Obtaining additional government permits
  - Relocating additional public utilities, based on the availability of utility companies

# Les Peupliers Street

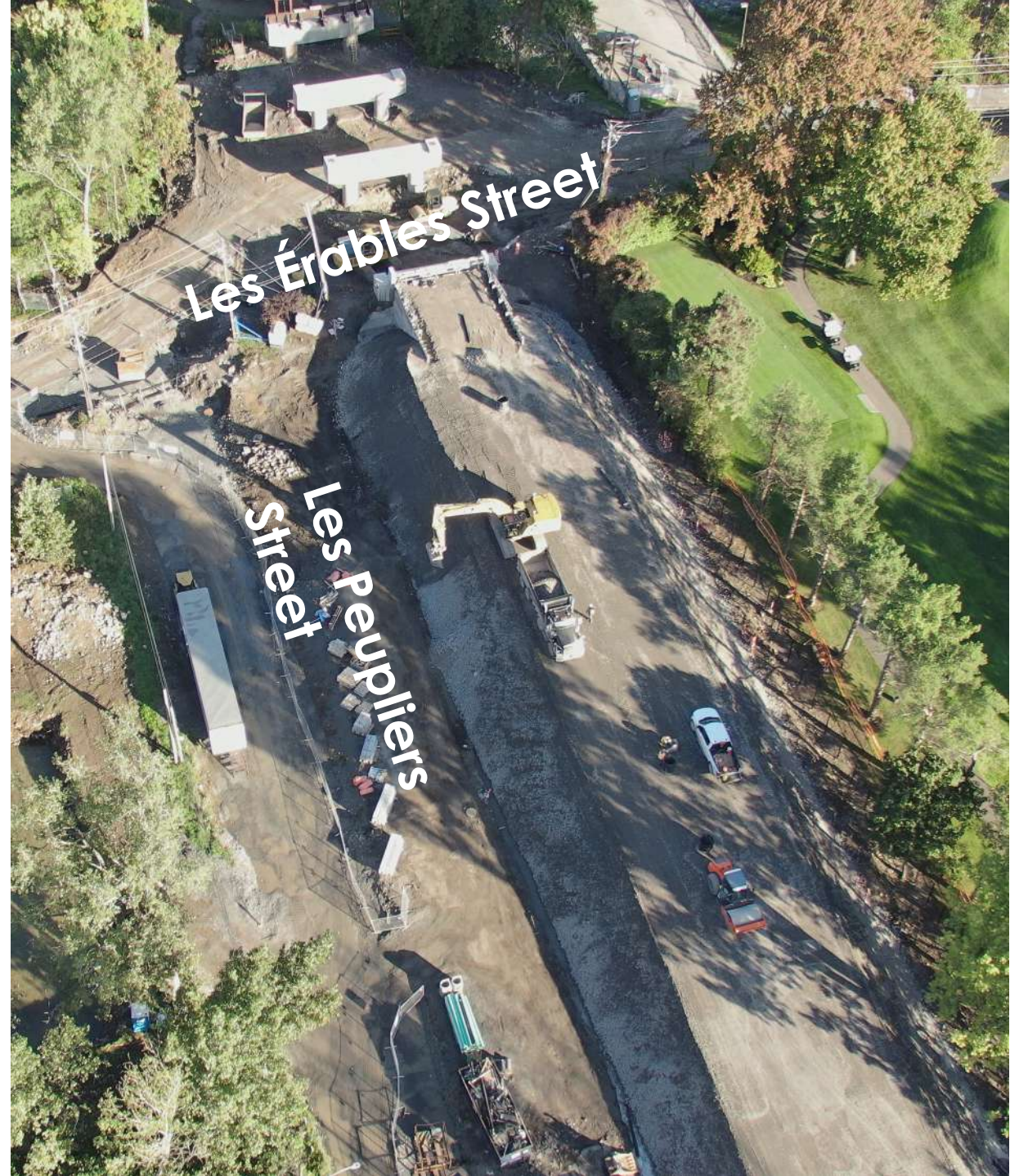
## Completed work:

- Excavation
- Relocation of water mains and storm sewers
- Reprofilng of the street

## Upcoming work:

- Curb and paving work (planned for 2023)
- Relocation of overhead wires

**No ongoing work**



# Les Érables Street

## Completed work:

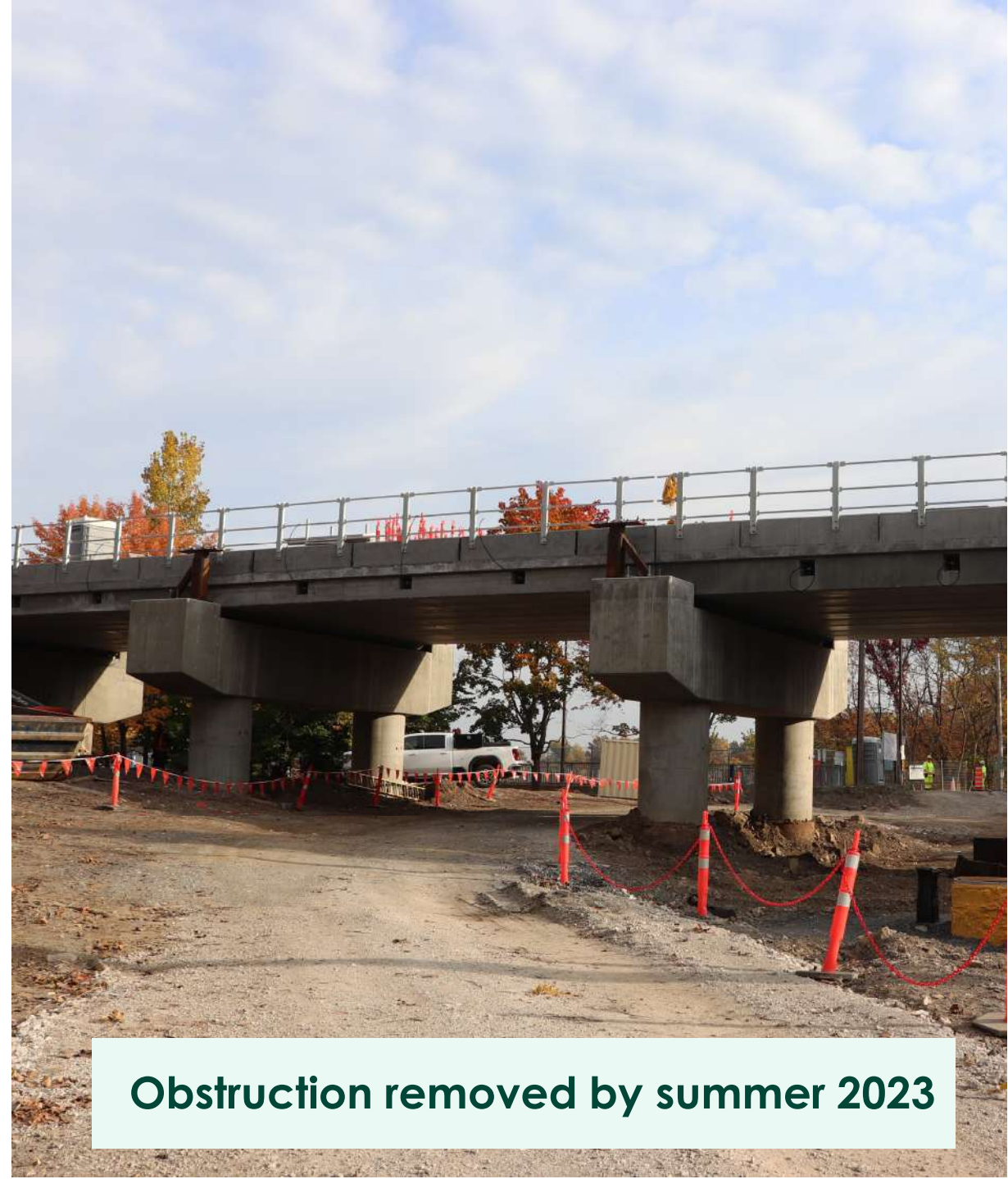
- Relocation of water mains and storm sewers
- Excavation

## Upcoming work in 2022:

- Relocation of blocks

## Upcoming work in 2023:

- Cable pulling
- Construction of retaining walls
- Earthwork
- Work on curbs and paving



**Obstruction removed by summer 2023**

REM - Construction of REM in Laval-sur-le-Lac

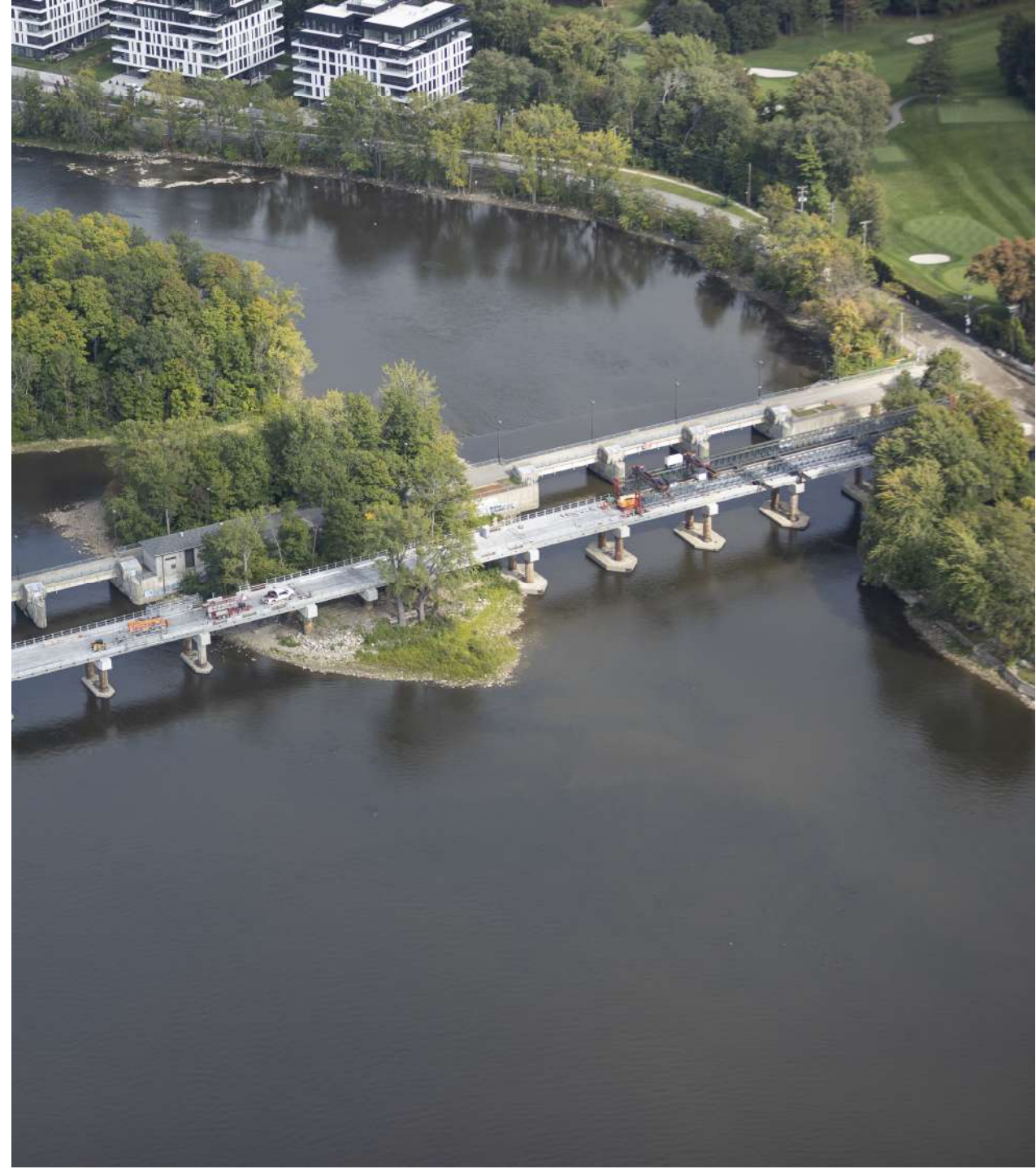
## Rivière-des-Mille-Îles Railway bridge:

### Completed work :

- Mobilization of the launcher (mobile crane to slide the beams onto the structure)
- Installation of beams

### Ongoing and upcoming work:

- Installation of permanent railings
- Installation of new rails
- Construction of retaining walls



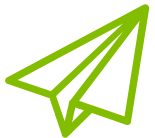


# Available tools

# For information on upcoming work



Information in one place  
[rem.info/en/north-shore](https://rem.info/en/north-shore)



Subscribe to newsletters  
for your sector  
[rem.info/en/newsletter](https://rem.info/en/newsletter)



For any questions,  
suggestions or  
complaints

[1-833-rem-info](tel:1833reminfo) or  
[info@rem.info](mailto:info@rem.info)



Consult our Works info  
[rem.info/en/works-info](https://rem.info/en/works-info)

Question and discussion period



# Questions?

For any further questions: [info@rem.info](mailto:info@rem.info)

 rem\_metro

 REM – Réseau express métropolitain

 REMgrandmtl

 1 833 rem-info  
(1 833 736-4636)

 info@rem.info

**rem.info**

Réseau  
express  
métropolitain

