

REM

Educational Kit

**Spotlight on work of art
by Chih-Chien Wang**

First name: _____

Age: _____

Date: _____

Arrival time in the REM: _____

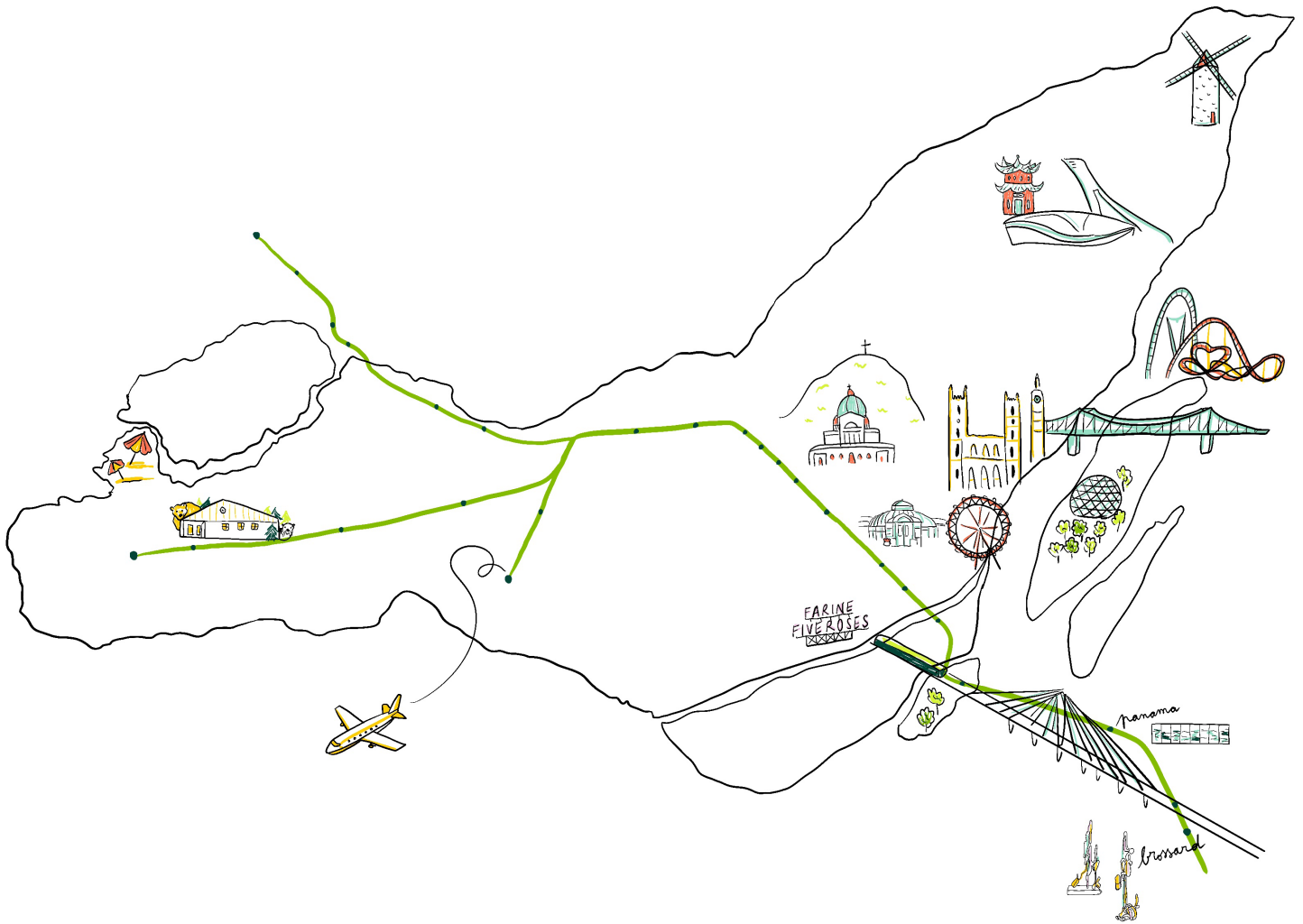
Departure time: _____

Current weather: _____

Passengers accompanying you: _____

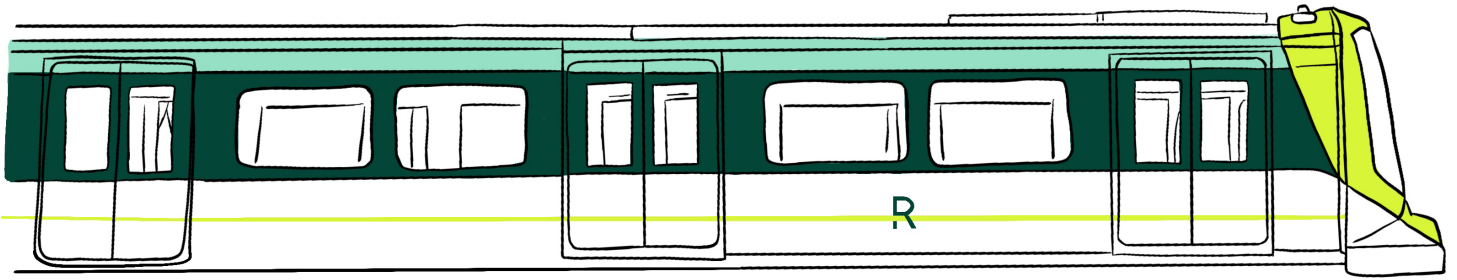
This booklet contains:

- map of the REM
- background about the work of art
- activities to do during your outing



Hi there!

Welcome to the **Réseau express métropolitain (REM)**! The REM is an automated light rail system with 26 universally accessible stations across Greater Montréal. The five REM stations from Brossard to Central Station have been in service since July 2023.



Have you ever taken the REM?

Yes No

If so, how did you get to the REM?

Did you walk?

Did you come by bike?

By car?

By metro?

By bus?

Maybe you took several modes of transportation!

Circle or draw
how you got here.

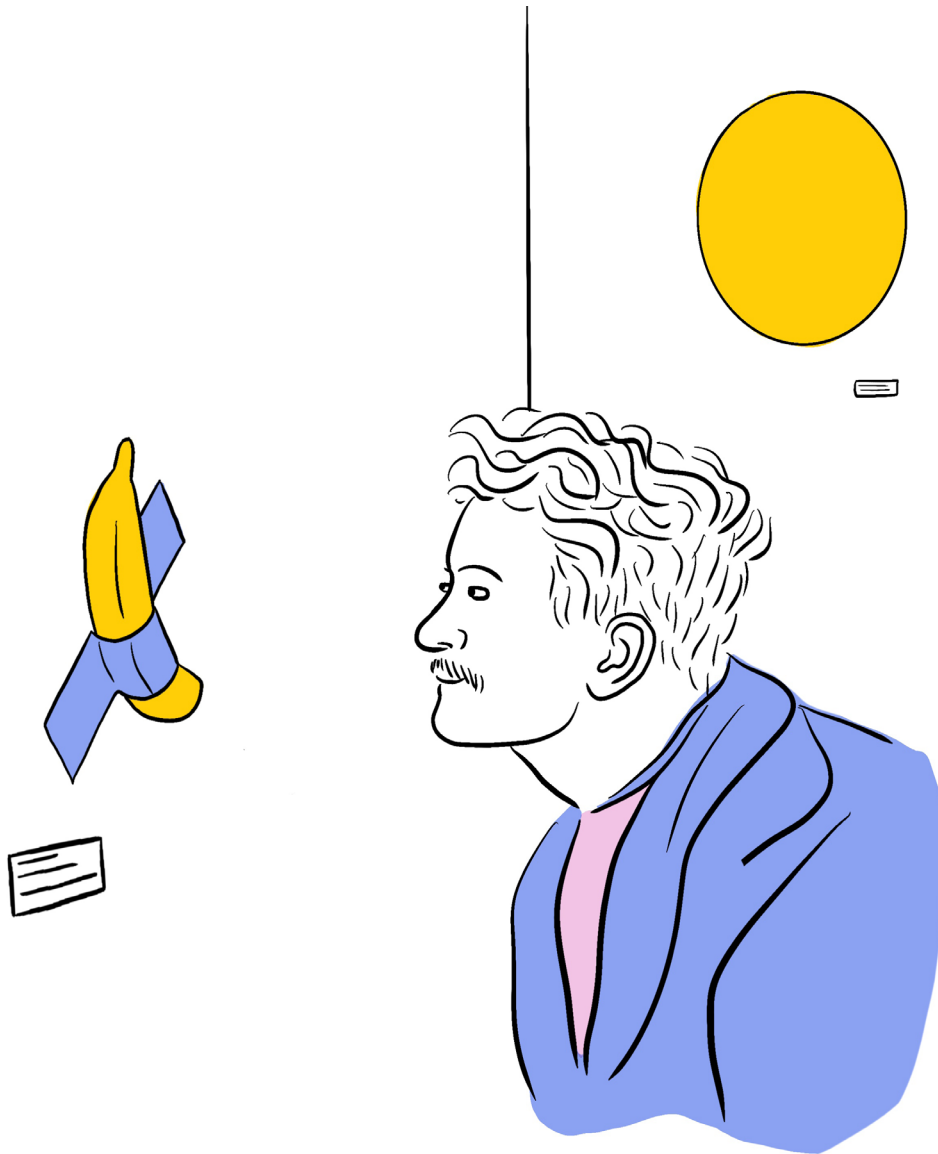


We're going to discover the works of art included in the REM's "UNIR" public art program.

Contemporary artists took part in a competition to create works to be exhibited at selected REM stations. These works are referred to as "public art."

What is a contemporary artist?

It's someone who presents their own perspective of their era and environment to others through an art form, to awaken, challenge and alter the public's perception. They use materials to express ideas and feelings. Their work can be realistic or abstract, or even an experience in and of itself!

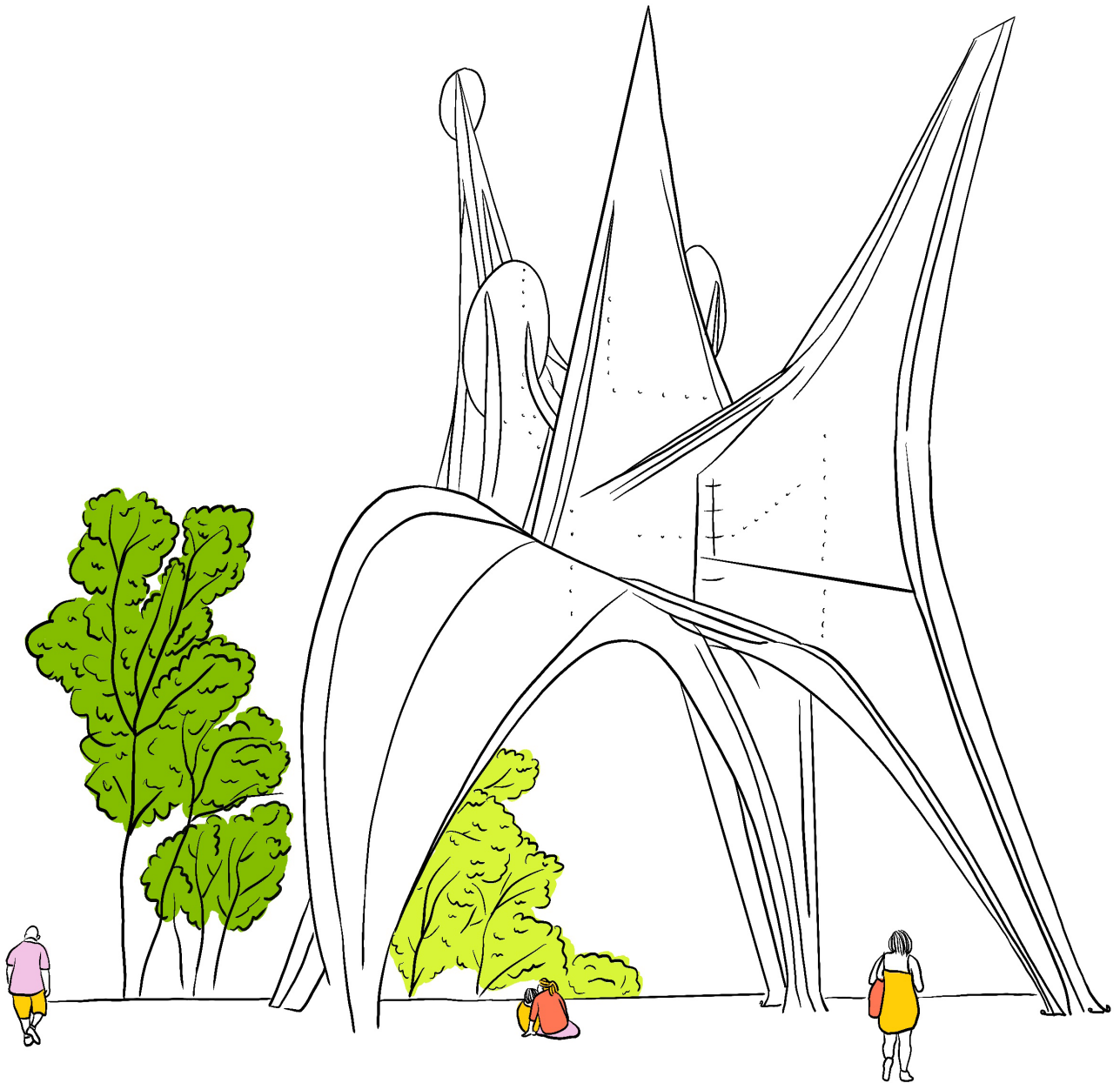


A visitor in front of The Comedian, a banana taped to the wall by Maurizio Cattelan, 2023.

**In your opinion, what is public art?
Are you familiar with any public art?**

Public art often goes unnoticed because it blends in with our surroundings and our everyday lives. These permanent or temporary works of art are found in outdoor and indoor public spaces. The artist chooses a creative medium: sculpture, installation, painting, photography, mosaic, media art, performance...

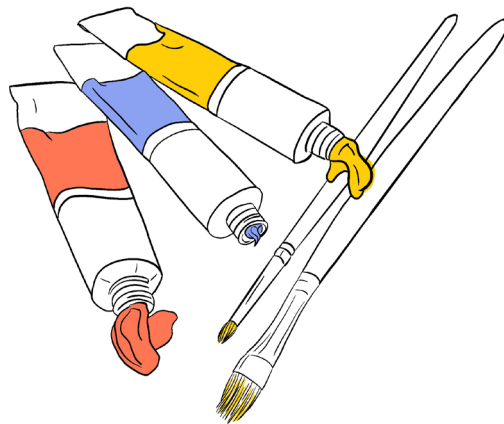
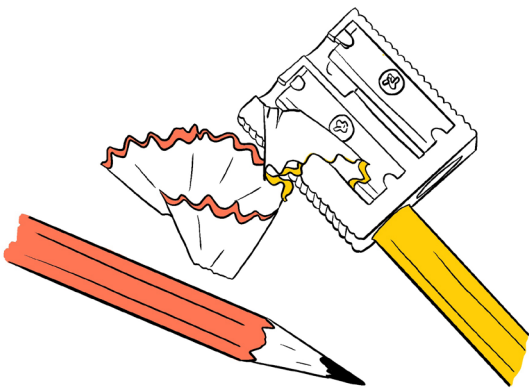
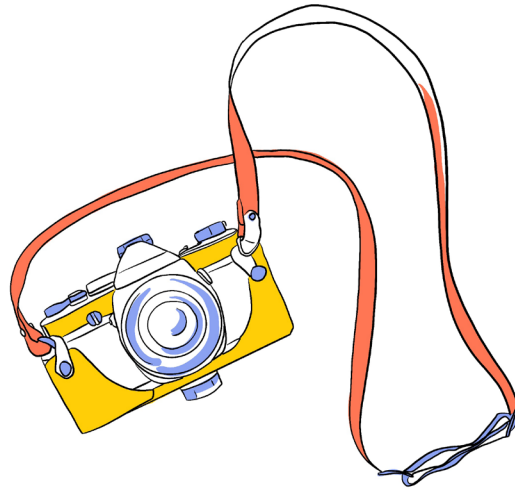
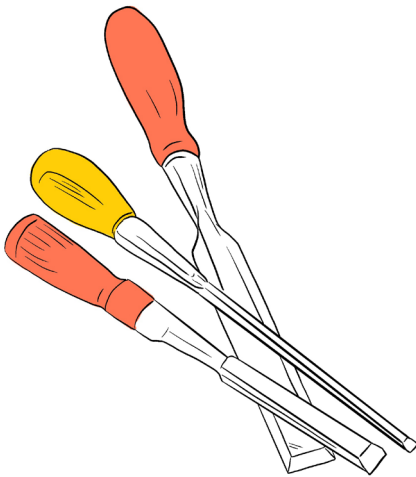
Colour in or add designs to this work of art by Calder.



Trois disques, 1967, Alexander Calder, Parc Jean Drapeau, Montréal

What's your favourite means of creative expression?

Circle your answer below or, if it's not shown, draw your means of artistic expression (dance, performance, singing, etc.).

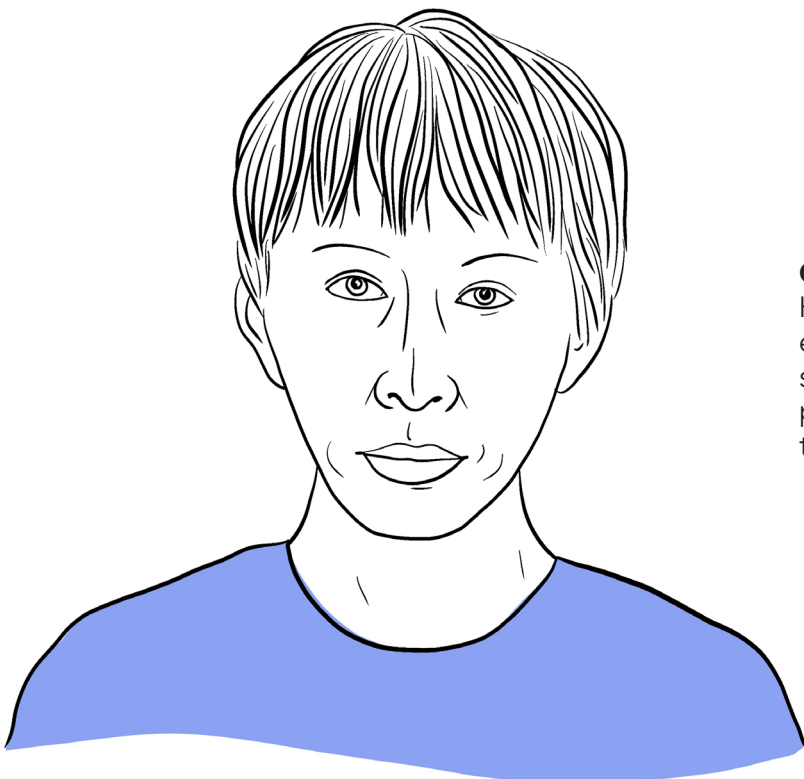


Have you spotted any of the public art while travelling on the REM?

Do you have a favourite?



Un voyage sans fin au-delà du présent, 2024, Chih-Chien Wang, REM Panama station, Montréal



Chih-Chien Wang is a Taiwanese-born artist. He has been living in Montréal since 2002. He explores the poetry of everyday experiences, showcasing ordinary moments in life through photography. His images evoke a fragility in things and the present moment.

**When we travel,
where are we heading
and what are we
leaving behind?**

Chih-Chien moves from the micro (dust from his living space) to the macro (clouds, sky, aerial views). He captures the ephemeral: dust, clouds, journeys and memories will fade, disappear and evaporate.

Wang plays with the image's content, quality and pixels. He plays with light and colour to bring out the very essence of the intangible: as though we could touch and capture light, dust and clouds. Through the prism of photography, he brings everything we cannot touch to our very fingertips.

If you've ever flown in or out of Montréal, you've surely gazed out the window at this kind of scenery. Chih-Chien has flown out of Montréal many times to visit his family and friends in Taiwan. On these flights, he has captured these aerial views of the landscape on his camera, both during the day and at night.

**Did you notice that some shots
were taken in the day and others at
night? How were you able to tell?
Where were the photographs taken
from?**

**In five minutes, do a quick sketch of
the work of art.**

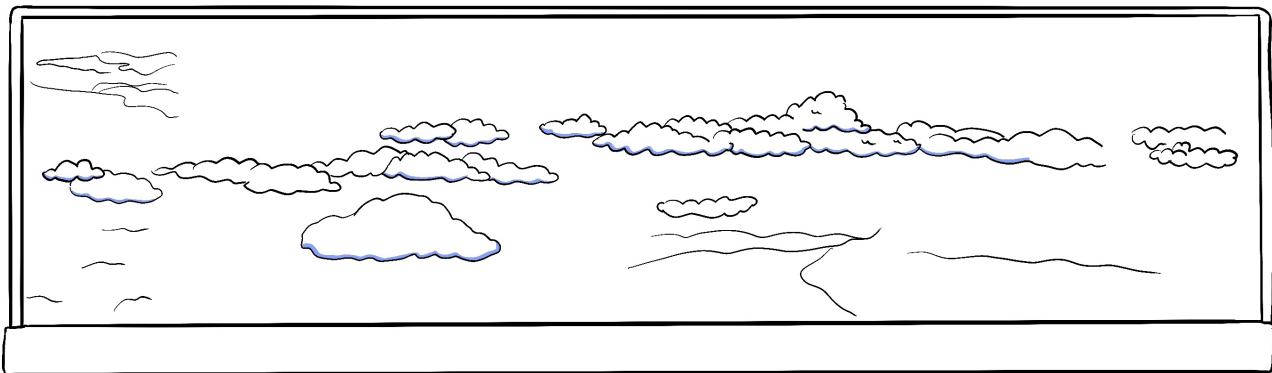
What is this work trying to say?
What does it make you think of?

Who is the artist?
What has inspired him?

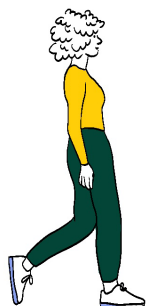
Describe its tones and hues
What is the subject or theme of the work?

What techniques or materials are used in the work? Why?

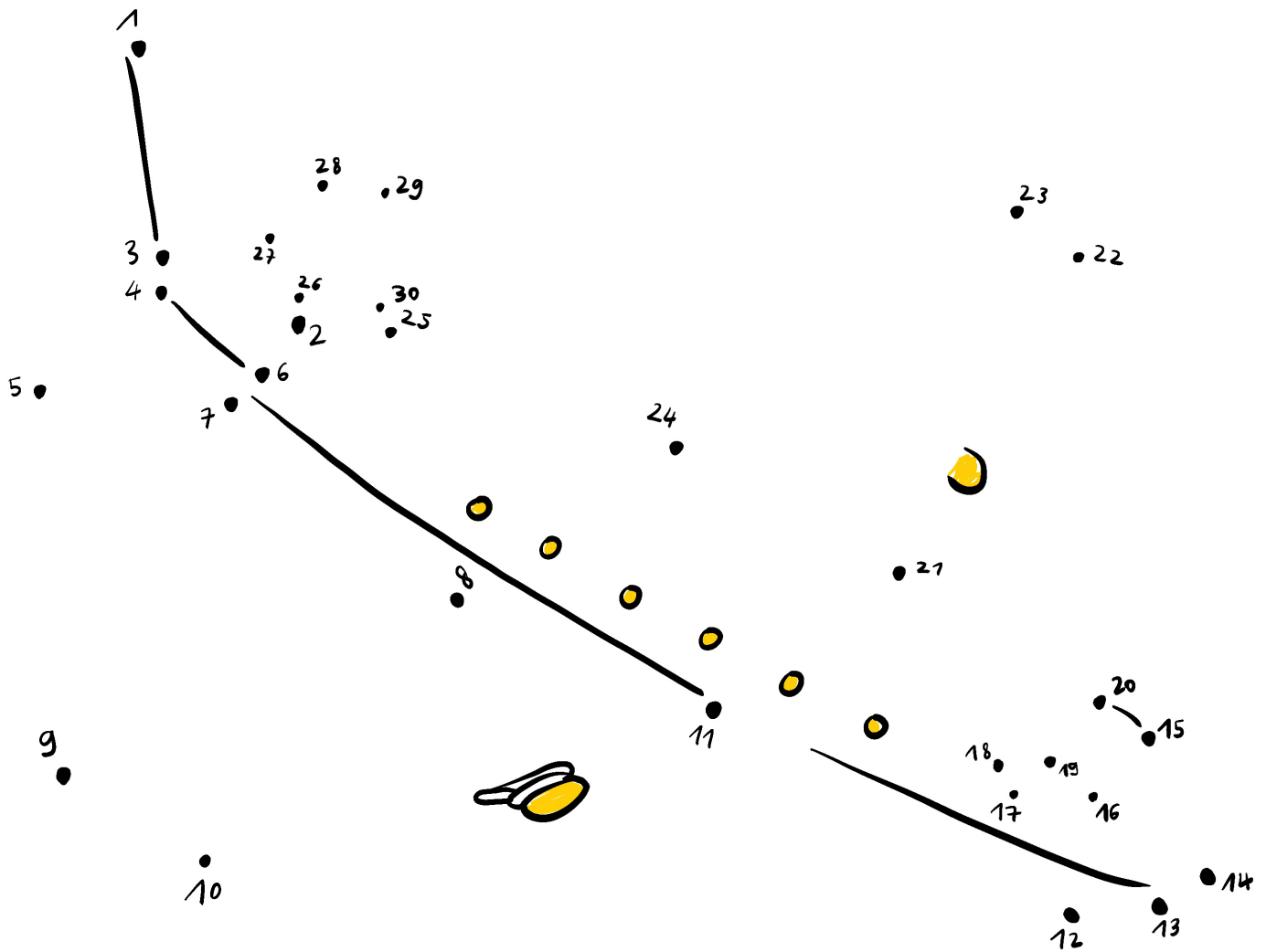
Use coloured pencils to fill in the coloured and transparent sections that you see. Add birds or flying objects to the drawing!



Un voyage sans fin au-delà du présent, Chih-Chien Wang



Connect the dots from 1 to 30 and check out the result!

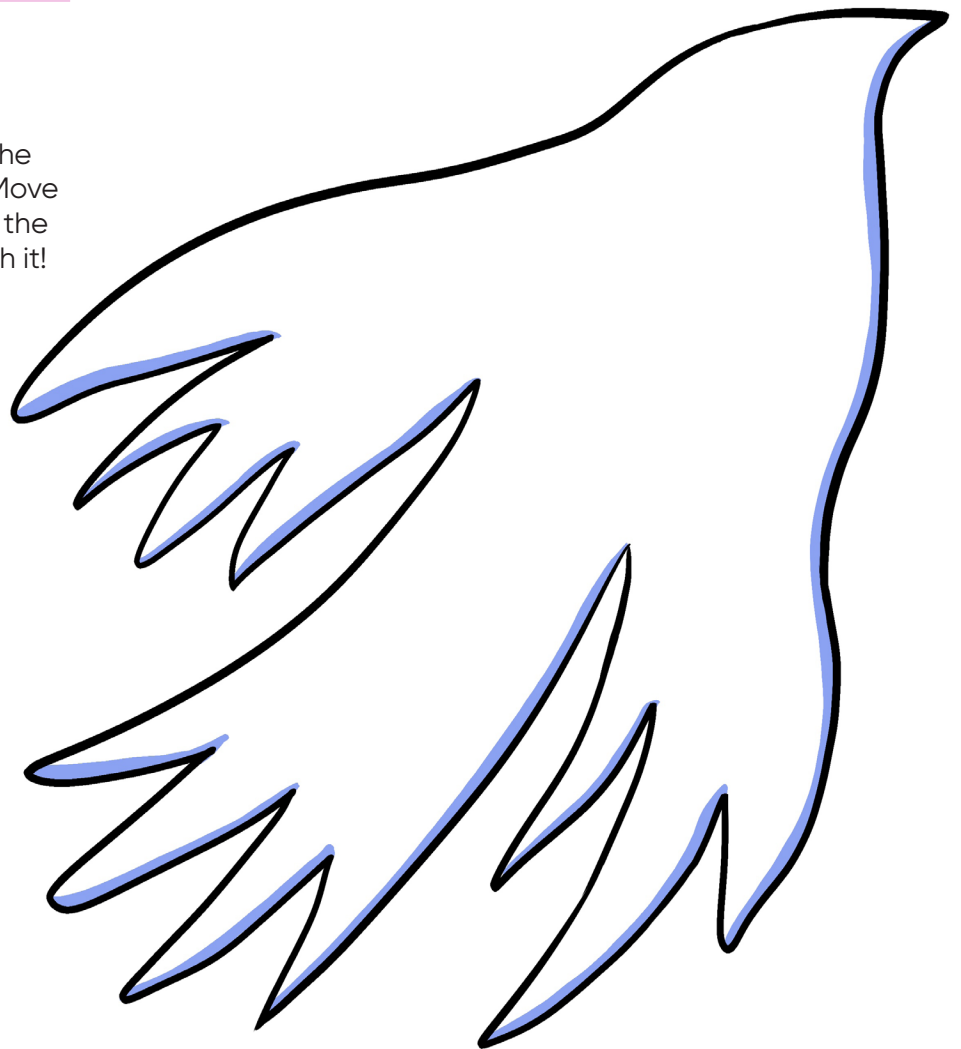


What inspired you
about taking a trip?
Where would you travel
and why?

How would you travel?
By closing your eyes, by
camel, by train, by rocket?

**Cut out the bird silhouette provided in
this booklet, and draw in its feathers,
markings and colours.**

If you wish, add words of peace that
inspire you. Tape a wooden stick to the
back of the bird, and away you go! Move
your bird in a flying motion in front of the
work of art, being careful not to touch it!



Relationship with the space

When an artist is asked to create a custom work of art that echoes the space it will occupy, they have to draw on their own memories and on what the space evokes for them personally.

Once a week, Wang visits grocery stores near the Brossard station to stock up on the familiar flavours of Taiwan.

What's your favourite place?

Are there any particular smells or tastes that bring back memories for you?
We call that a "Madeleine de Proust."

A "**Madeleine de Proust**" is an expression used to describe smells, tastes, sounds, details or objects that trigger happy childhood memories or nostalgia over long-lost memories. These elements can bring back or reactivate a memory, as did a madeleine for the narrator of *À la recherche du temps perdu* in *Du côté de chez Swann* (1913), the first volume of Marcel Proust's novel.



Create a time capsule

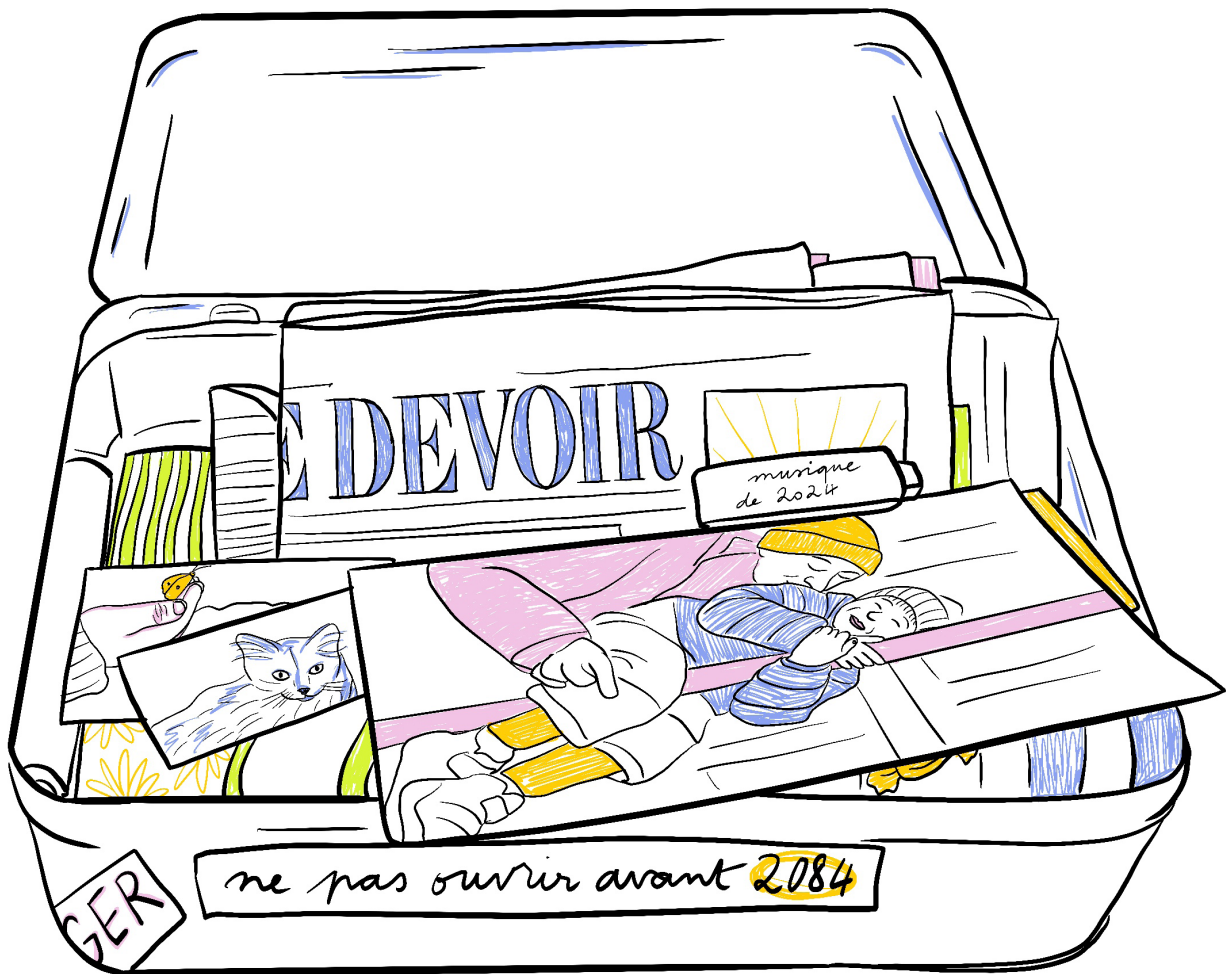
If I had to leave or go on a trip, what would I take with me?

A time capsule is a historic cache of goods or information, usually intended as a deliberate method of communication with future people. Time capsules are sometimes created and then buried during ceremonies or celebrations, such as the world fair, or buried unintentionally, like in Pompeii.

It's a sealed container that holds objects, mementos or messages destined to be discovered at some future point in time. It's a way of preserving the present era for future generations or for one's future self, creating an emotional link between past, present and future. It's a fun and meaningful way to capture the essence of time and leave a trace of its passage!

Material

- container (Mason jar, metal box)
- transparent paper for overlays
- meaningful objects representing current times (photos, letters, drawings, small toys, USB stick with your current playlist, sample of your perfume, lock of hair, handprint...).
- messages: write letters or messages for future discoverers or for your future self, describing current life, your hopes and dreams
- news articles that stand out for you and reflect current events
- photographs or drawings: animals, plants, family, friends... in photos, drawings, collages, paintings or written names



After this activity, **to preserve your memories, put everything in a box (which you can also label with a date on which to open it) and hide it in your garden or attic.** Imagine finding this box 10 or 20 years from now! You'd realize that time has gone by, that your tastes have changed or that perhaps some have remained the same.