

REM

Educational Kit

**Spotlight on work of art
by David Armstrong VI**

UN | **R**
Programme d'art
public du REM

First name: _____

Age: _____

Date: _____

Arrival time in the REM: _____

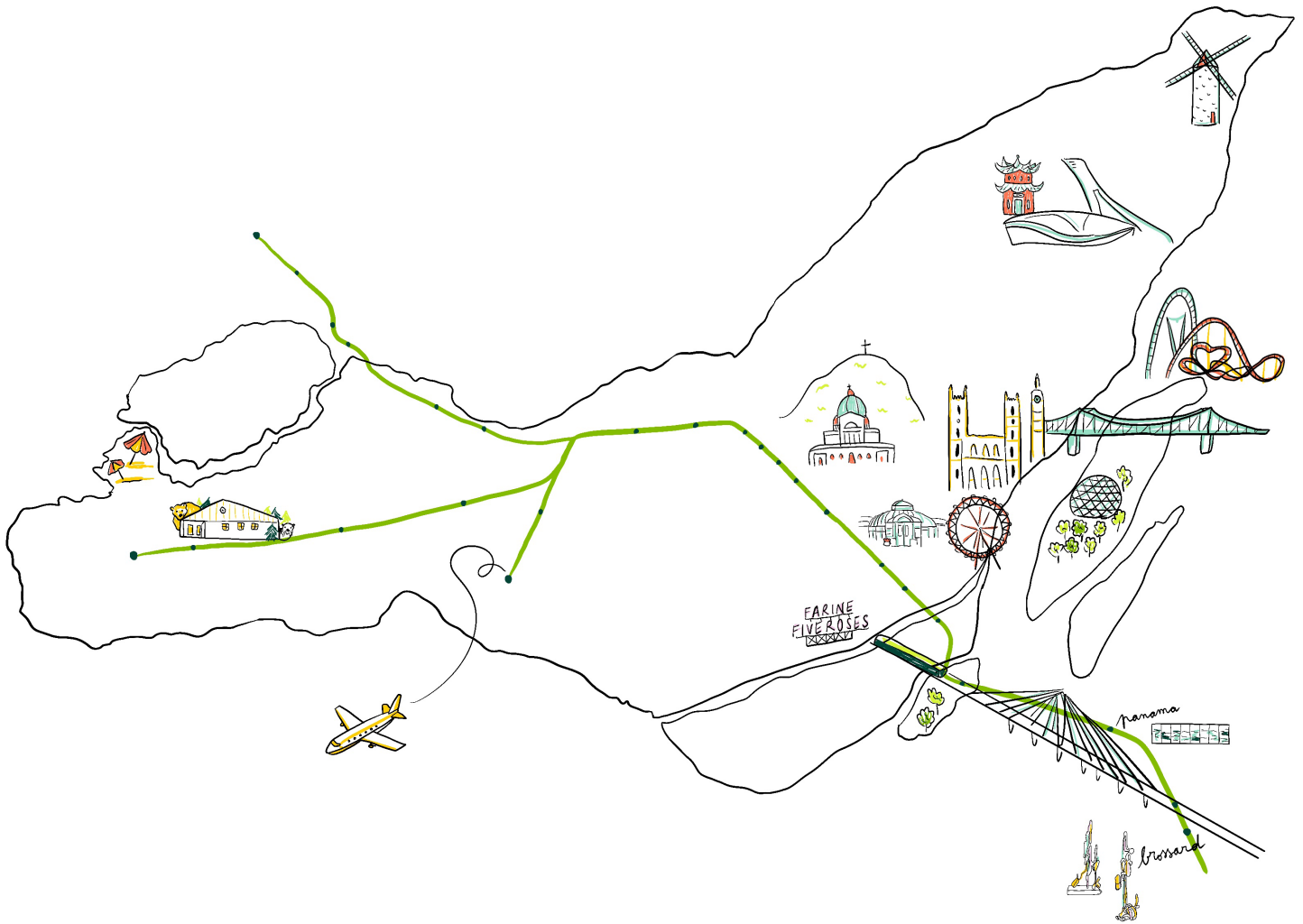
Departure time: _____

Current weather: _____

Passengers accompanying you: _____

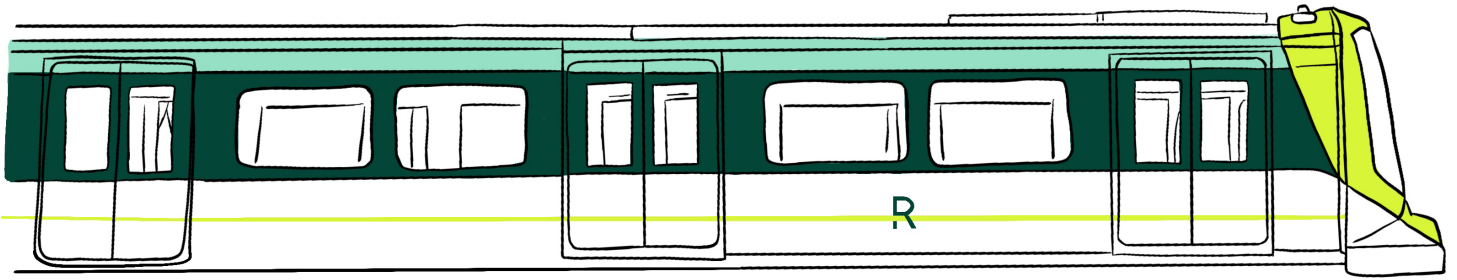
This booklet contains:

- map of the REM
- background about the work of art
- activities to do during your outing



Hi there!

Welcome to the **Réseau express métropolitain (REM)**! The REM is an automated light rail system with 26 universally accessible stations across Greater Montréal. The five REM stations from Brossard to Central Station have been in service since July 2023.



Did you take the REM?

Yes No

How did you get to the REM?

Did you walk?

Did you come by bike?

By car?

By metro?

By bus?

Maybe you took several modes of transportation!

Circle or draw
how you got here.



We're going to discover the works of art included in the REM's "UNIR" public art program.

Contemporary artists took part in a competition to create works to be exhibited at selected REM stations. These works are referred to as "public art."

What is a contemporary artist?

It's someone who presents their own perspective of their era and environment to others through an art form, to awaken, challenge and alter the public's perception. They use materials to express ideas and feelings. Their work can be realistic or abstract, or even an experience in and of itself!



Yayoi Kusama in front of one of her yellow pumpkins

**In your opinion, what is public art? What's its purpose?
Are you familiar with any public art?**

Public art often goes unnoticed because it blends in with our surroundings and our everyday lives. These permanent or temporary works of art are found in outdoor and indoor public spaces. The artist chooses a creative medium: sculpture, installation, painting, photography, mosaic, media art, performance...

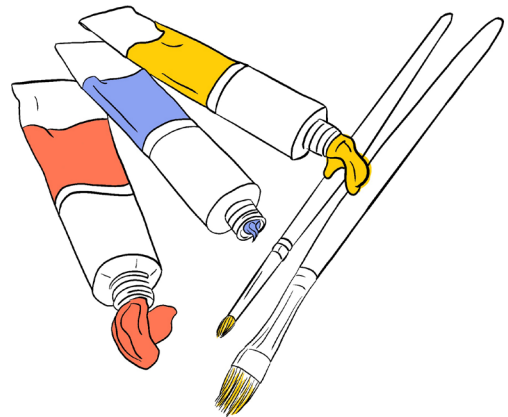
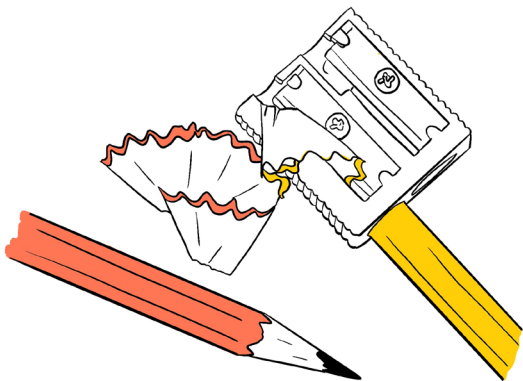
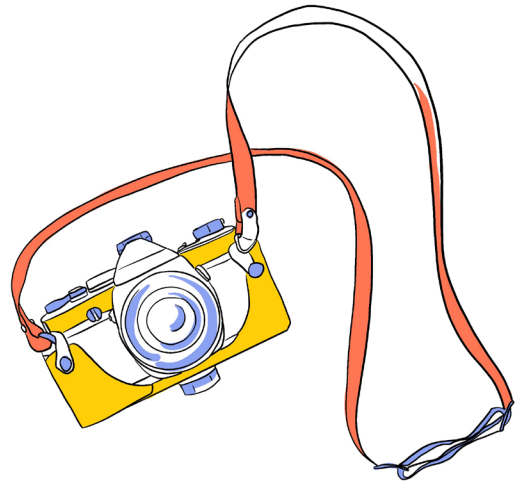
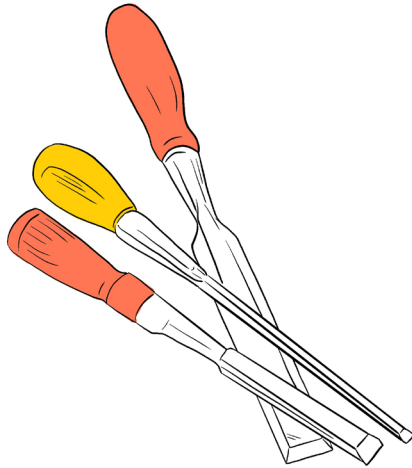
Circle the 7 differences you can find in the drawings.



The Ring, 2022, by CCxA

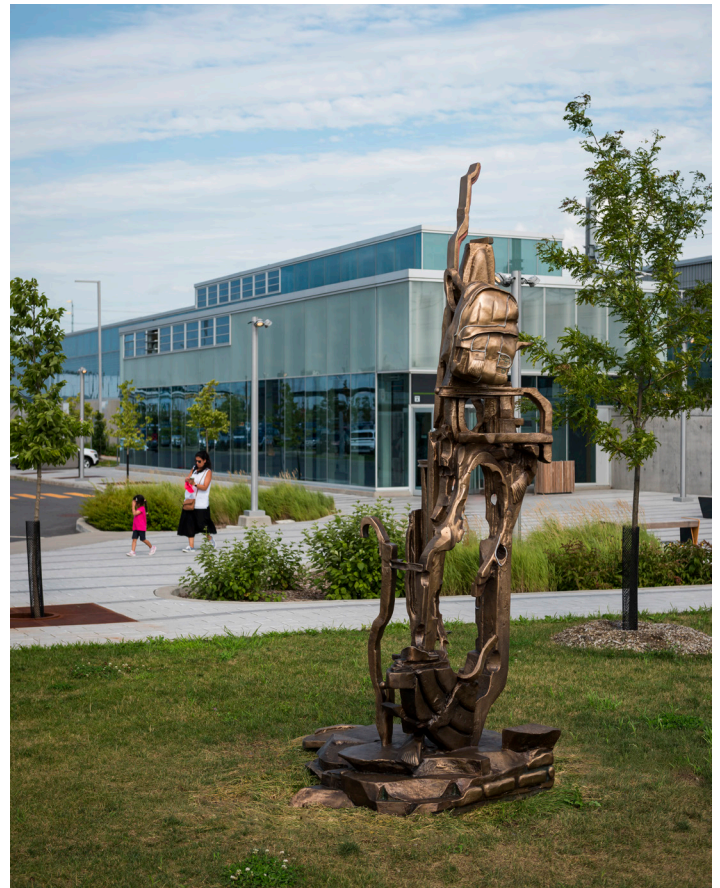
What's your favourite means of creative expression?

Circle your answer below or, if it's not shown, draw your means of artistic expression (dance, performance, singing, etc.).



Have you spotted any of the public art while travelling on the REM?

Do you have a favourite?



Les passagers, 2024, David Armstrong VI



David Armstrong VI is an artist known for his sculptures. He lives and works in Montréal. His works are an intuitive fusion of forms, textures, colours and objects.

The artist created a set of two sculptures (diptych), located outside the station, that focus on the very essence of travelling by public transit. His work, entitled *Les passagers*, depicts two plant-like and animal-like figures, that are also clearly human with their suitcase or backpack. They seem to belong both to the past and the future, like two intrepid travellers from another time.

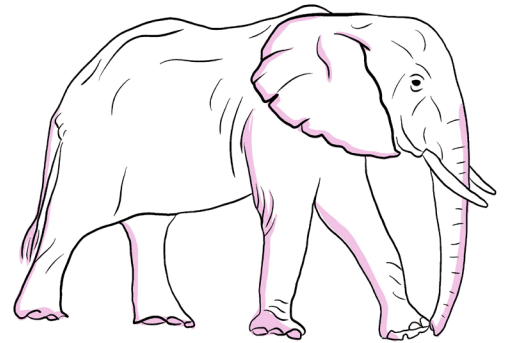
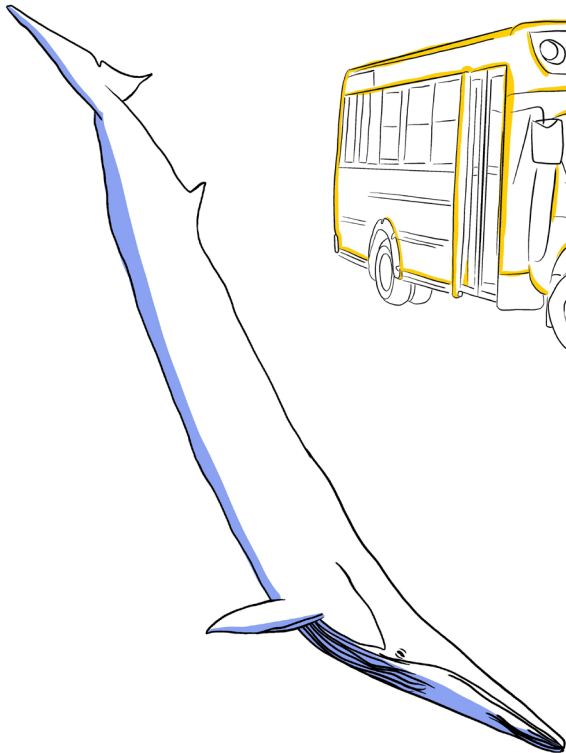
In five minutes, do a quick sketch of each sculpture.

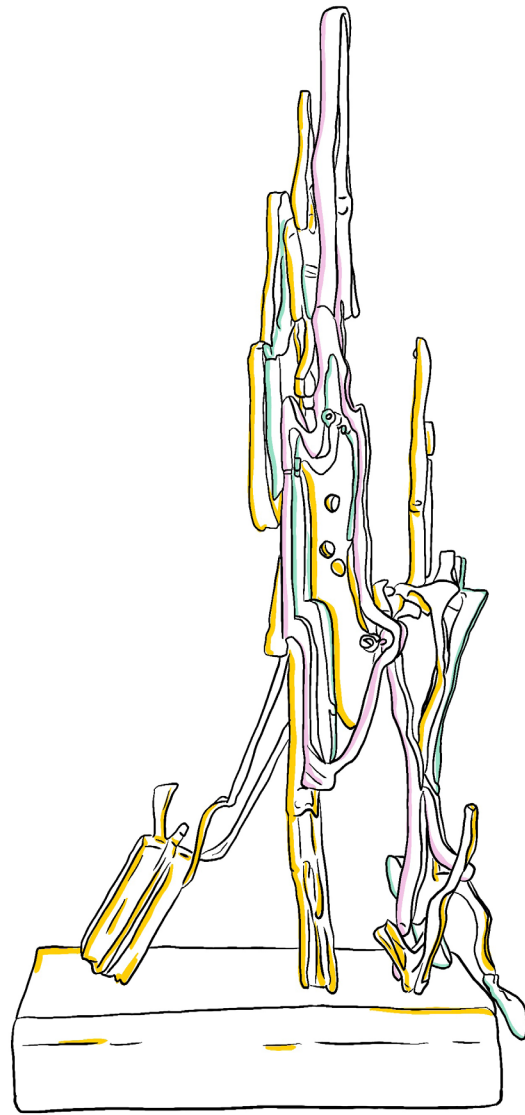
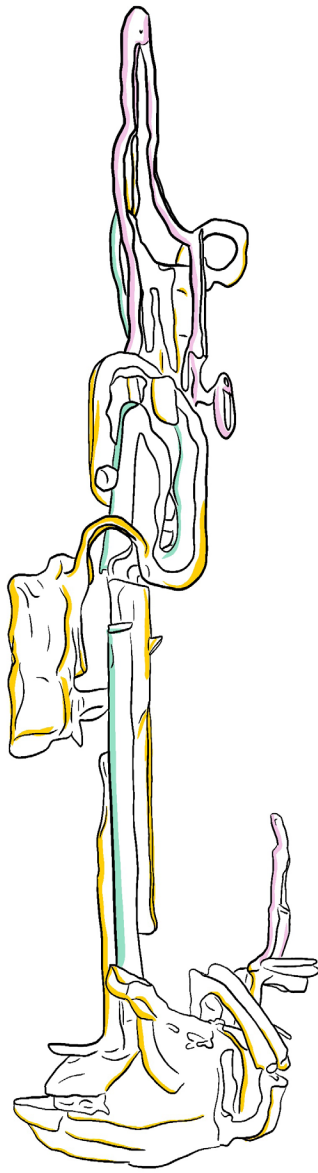
**What are these sculptures about?
What do they make you think of?**

**Who is the artist?
What has inspired him?**

What do you call
a duo of works?

How tall do you think they
stand? Are they as big as an
elephant?
A blue whale? A school minibus?





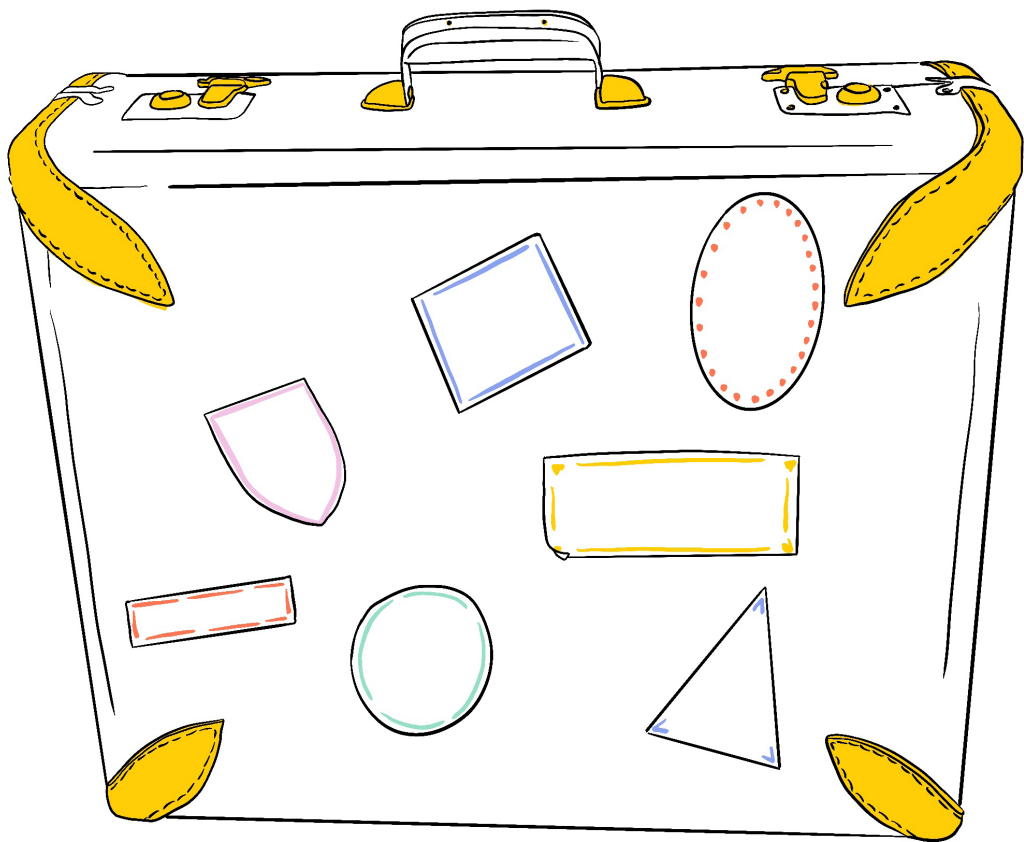
Relationship with the space

When an artist is asked to create a custom work of art, they have to draw on their own memories and on what the space evokes for them personally. Armstrong VI's two sculptures reflect the gestures and traits of the sculptor's initial sketches of the project. Much like a music composer and their initial musical notations, but also like a passenger who doesn't yet know what their journey has in store! David's inspiration for his passengers was drawn from nature, which grows and flourishes in spring. He was also inspired by the lines and curves of the REM track!

What colours are the sculptures? What materials do you think were used in designing these works of art?

In your opinion, has the artist attached significant importance to the sculptures' presentation and location?

On this suitcase, write your name, the cities or countries you've already been to and where you dream of going.



When and why were the wheeled suitcase and backpack invented?

- The modern, rolling suitcase with telescopic handle and two wheels dates back to 1918. It was invented by Robert Plath, an airline pilot who first sold his invention to fellow pilots and flight attendants.
- Wicker baskets first appeared in the 11th century, and were sometimes worn on the back. In the 17th century, wooden frames were developed, attached to the shoulders with leather straps. Two hundred years later, a large leather bag was attached to a frame, creating the first backpack.

When you look at ancient sculptures, you can tell which era they come from: a laurel wreath on the head of a sculpture from ancient times, a knight on horseback... The suitcases featured in David's two sculptures say a lot about how we travel in 2024!

Draw the travel accessories of an REM user in 2124.

And how about you? If you were asked to create a work of art for the REM, would you make a drawing, a sculpture, a mosaic or something else?

Below, sketch what you'd like to do, or create a diptych of sculptures.

Using *Les passagers* as your inspiration, create a semi-abstract or abstract human-form work of art based on the 'passenger' theme.

- **Think of a trip you've made (from the smallest like going to the bakery, to the biggest like a trip by metro, train or plane...). What emotions were you feeling?**

Can you translate them into colours? Into movement (slow, fast, light, heavy)?

- Each form in a different colour, and each colour conveying an emotion (red for anger, blue for fear...). You can use primary, warm and cold colours.

If possible, do this activity with a friend and assemble your coloured forms and stories to create two large abstract figures.

