

# UNIR

## **REM**

### **Educational Kit**

**Spotlight on work of art  
by Manuel Mathieu**

**Here's your logbook! Fill in the information below to start your adventure:**

Explorer's name: \_\_\_\_\_

Year of birth: \_\_\_\_\_

Mission date: \_\_\_\_\_

REM departure time: \_\_\_\_\_

Return-to-base time: \_\_\_\_\_

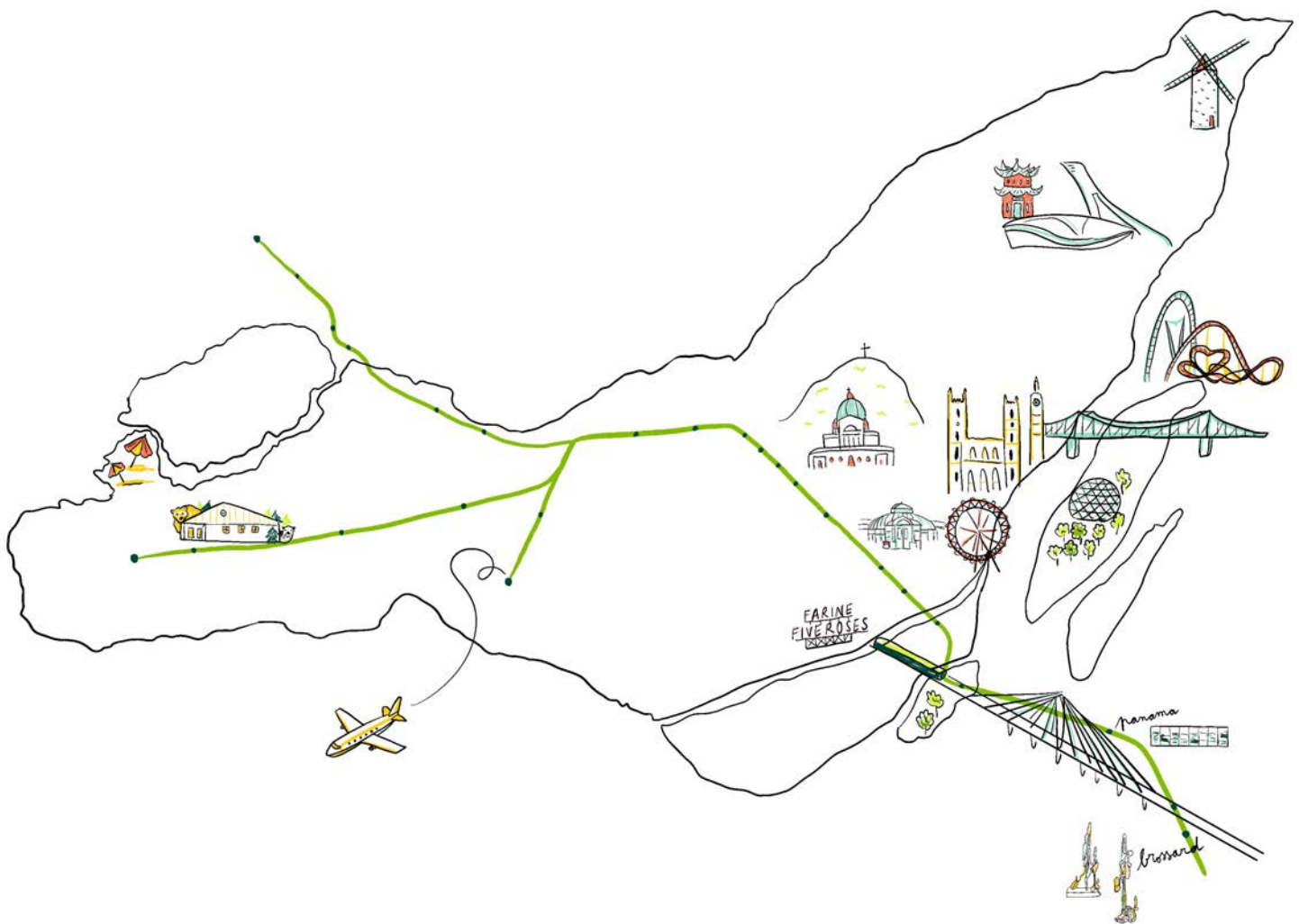
The weather outside: \_\_\_\_\_

How you're feeling inside: \_\_\_\_\_

Your teammates: \_\_\_\_\_

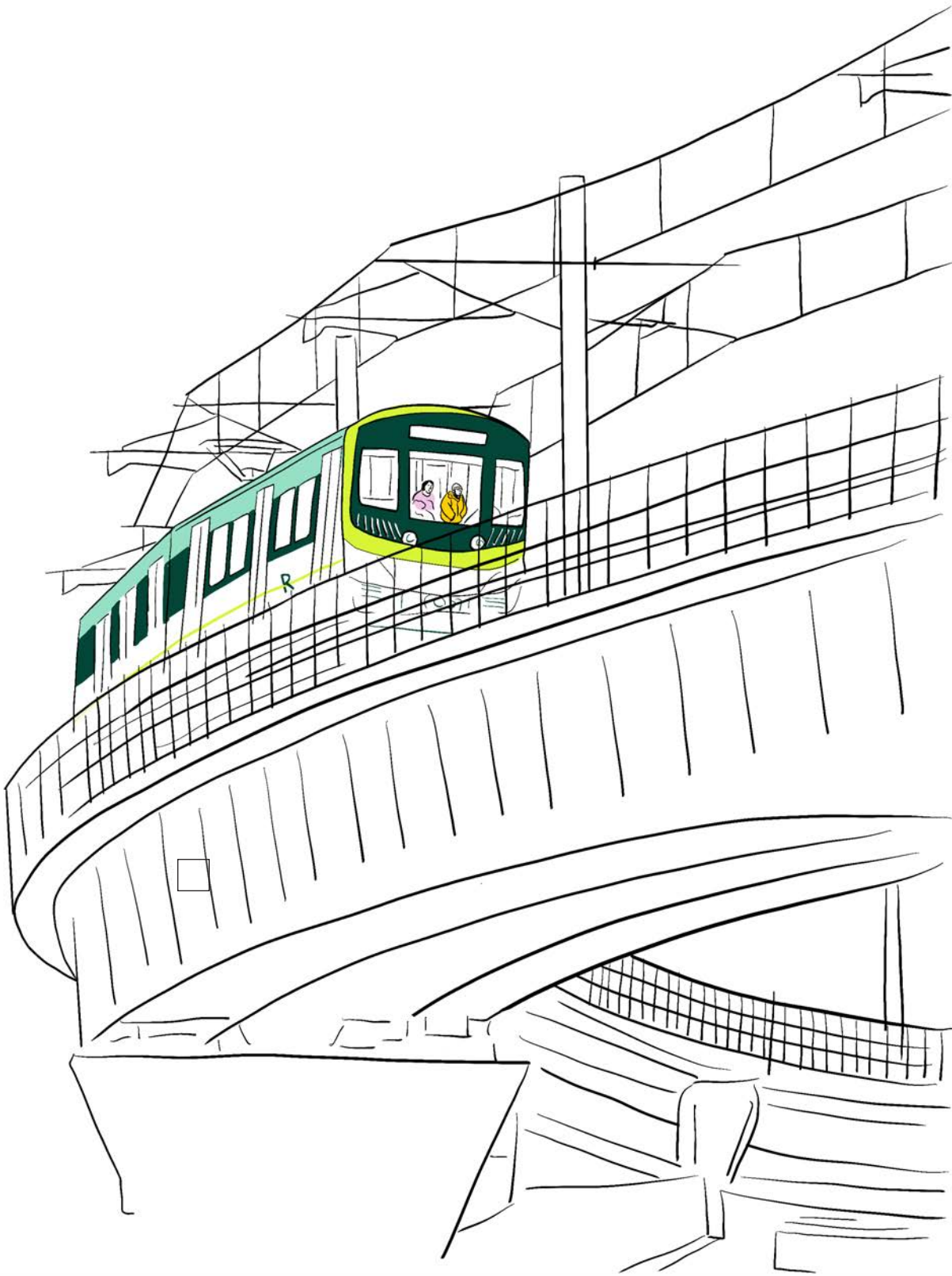
**In this booklet you will find:**

- A map of the REM
- The story behind the work
- Some fun games



# Hi!

Welcome aboard the **Réseau express métropolitain (REM)**!  
This driverless light metro network connects 26 accessible stations in the Montréal area. The current route has been in service since July 2023 and takes now passengers from Brossard to Deux-Montagnes.



**Have you taken the REM?**

☐ Yes ☐ Non

Circle or draw the transportation method you used to get here today.

You can even circle more than one!

I walked

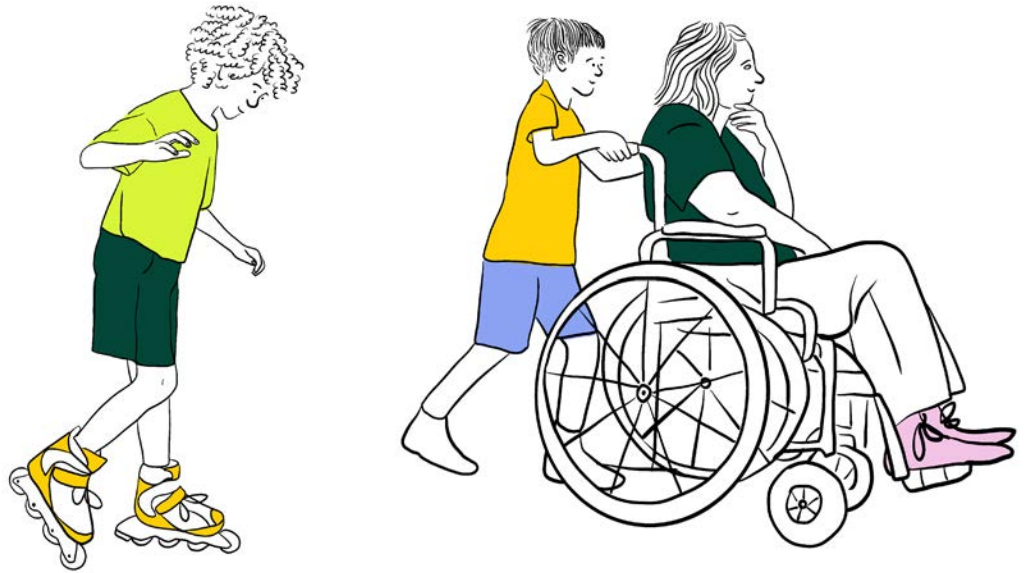
I biked

By car

I took the métro

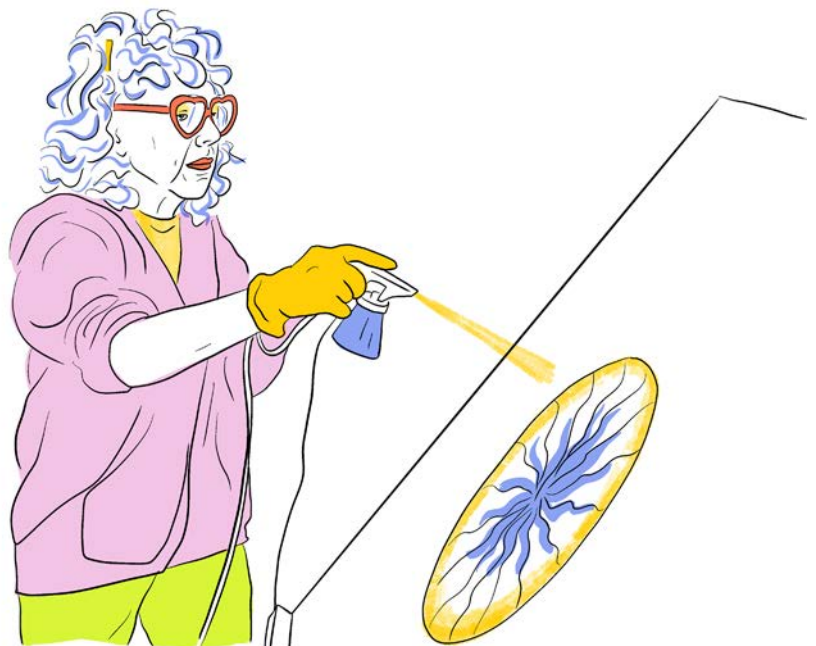
On roller skates

How did you get here today?



The REM held a contest to pick contemporary artists. Their works, called "public art," are now on display at some of REM stations.

What is a contemporary artist?



The artist Judy Chicago

A contemporary artist is someone who makes art today. They use ideas and materials from our time or from the past.

Artists look at the world around them. They ask questions and make us think. They use materials to express ideas and feelings realistically or in an abstract way. Art can also be an experience, like a show or an immersive work.

Some works may not be pretty, but they make us feel many different emotions. Often, what the art means is totally up to you. It's a way for you to participate and step out of your comfort zone.

**What is public art? What is it for? Do you know any works of public art?**

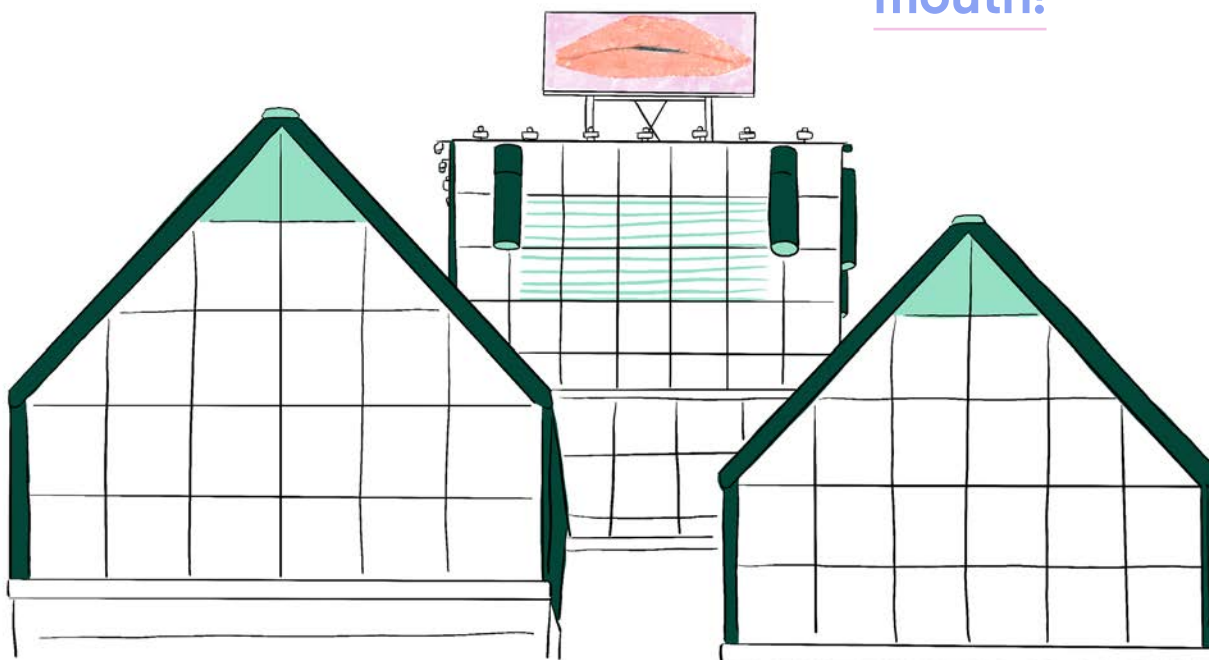
---

---

**Public art is accessible to everyone, all the time.**

Works often go unnoticed because they blend into our daily lives and surroundings. They are often located in public places, outdoors or indoors. They can be permanent or temporary or tell us about a place or a setting. Public art also make us think about important ideas. It speaks about us and helps us build a shared history. Artists have many ways to express themselves: sculpture, painting, photography, mosaic, media, performance, etc.

Draw the rest of the face around this big mouth!



---

---

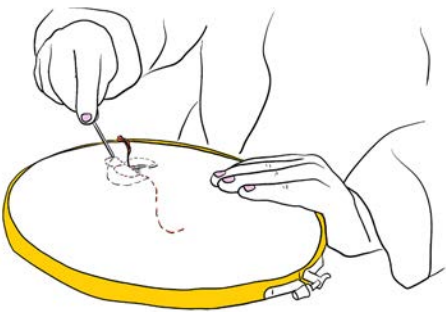
---

What gives you the most freedom to create?

If you had to choose just one way to express yourself artistically, which would it be? What would it let you do?

Circle your choice below (dance, embroidery, singing, theatre)

or draw your favourite way if it is not listed (clay, painting, drawing, photography, video, etc.).





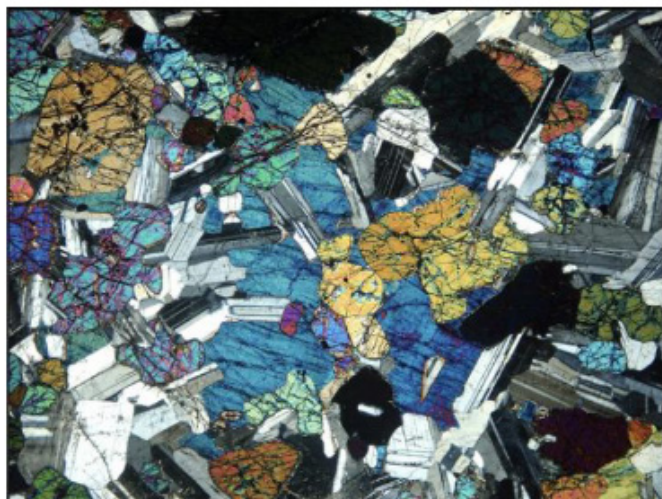
On your trips on the REM, have you seen any of the works in the public art circuit?

If so, tell me which one caught your eye and why?



**Manuel Mathieu** is a multidisciplinary artist. He works through painting, drawing, installations, ceramics, sculpture, perfume, and video. He was born in Port-au-Prince, Haiti. As a child, Manuel was surrounded by art, because his mother was a collector. When he moved in with his grandmother near Montréal at age 19, he went to the Édouard-Montpetit métro station every day go to school. He collaborated with Mosaïka studio to design his five pieces.

Édouard-Montpetit Station is the deepest in Canada and one of the deepest in the world (72 metres). Its architecture highlights the rock the station was dug into. This rock is called gabbro. It looks grey, but under a microscope, you can see colourful patterns and infinite details.



**What do these slices of gabbro remind you of?**

Stained glass? A battlefield? A bird's-eye view of the countryside?

Manuel was inspired by the complexity of the shapes and textures. He used them as a starting point for creating his mosaics.

He created large-format works using paint, watercolour, and collage. The ceramists at the mosaic studio then decoded his language by creating a puzzle, with each piece custom-made.



Let your imagination take flight on this public art circuit!

---

---

**Spend a moment carefully observing one of the works. What does it inspire in you? What emotions come to mind when you look at it?**

---

---

**When you look at these works, what story unfolds in your head? What kind of landscape do you see?**

---

---

**Are his paintings abstract or figurative**

**How do you feel when you stand in front of the mosaic panels? Big or small? What effect did the artist want to create with this format?**

---

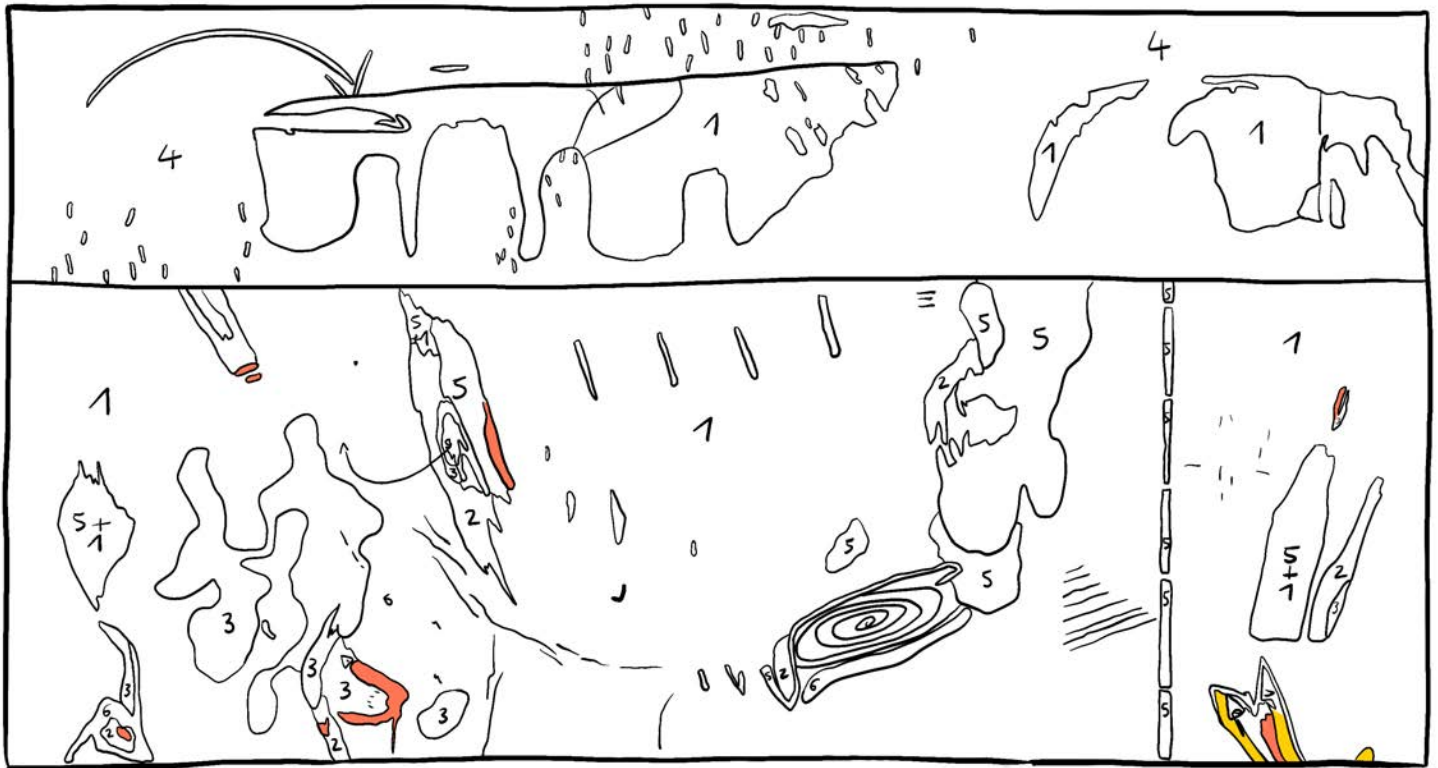
---

---

---

**Next, look at the rock. It is an integral part of the station and of Mount Royal. Do you know the name for people who study rocks?**

Bring the work to life! Colour in the numbers in the drawing based on the colour key.



- |   |            |   |      |
|---|------------|---|------|
| 1 | rose pâle  | 6 | vert |
| 2 | jaune      |   |      |
| 3 | bleu ciel  |   |      |
| 4 | bleu foncé |   |      |
| 5 | gris       |   |      |

### Connection to the place

Manuel Mathieu has a special connection to Édouard-Montpetit Station. After he arrived from Haiti, he went to school in this area.

To create *Le Mont habité* (The Inhabited Mountain), he drew on childhood memories. He also explored the mountain in a very original way.

He wanted the images to look like they were coming out of the stone, like they had always been part of the mountain. He created a magical link between the art, the rock, and his memories.

### Observe la nature, inspire-toi d'elle et réalise ton œuvre!

Trouve dans la nature une petite roche, une feuille d'arbre ou un morceau de bois.

Observe ses motifs et textures. Ensuite, sur une feuille de papier, reproduis les motifs que tu vois en utilisant de la peinture, des feutres ou des crayons de cire. Tu peux également créer tes propres motifs imaginaires inspirés de l'élément naturel que tu as choisi.

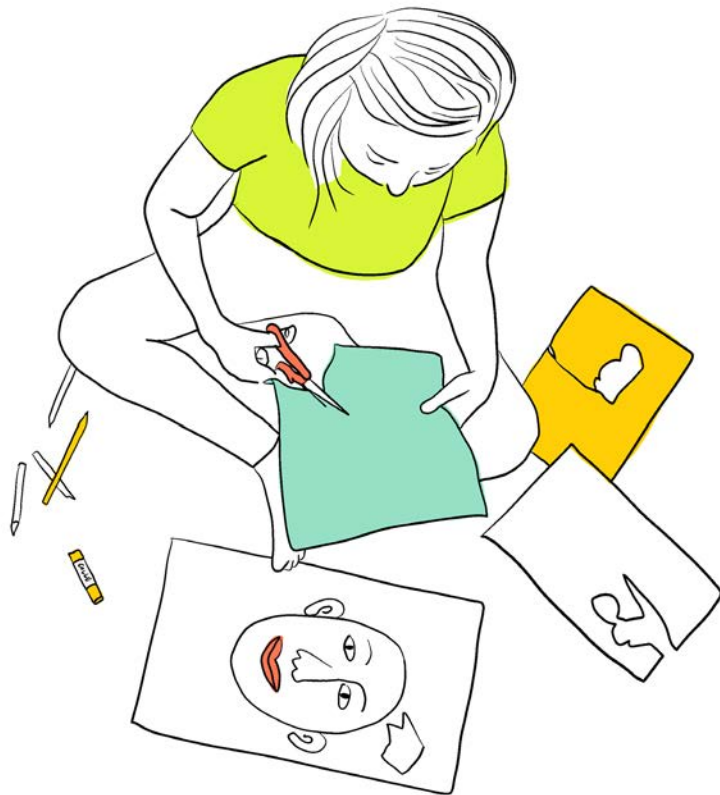
Aussi, dans un troisième temps, enduis ton élément de peinture fraîche et presse-le sur du papier ou un échantillon de tissu afin d'en révéler l'empreinte.

### The "Inhabited Me"

On a piece of paper, draw a simple sketch. It can be of yourself, your home, a pet, your family, or whatever you like.

Use coloured pieces of paper, eggshells, fabric, etc. Glue them piece by piece onto your drawing to create a mosaic.

Your work is made of many small fragments. Together, they form one big image, just like Manuel's art.



**If you were an artist, which REM station would you choose? Would you make a sculpture, a sound-based work, stained glass, or something else?**

---

---