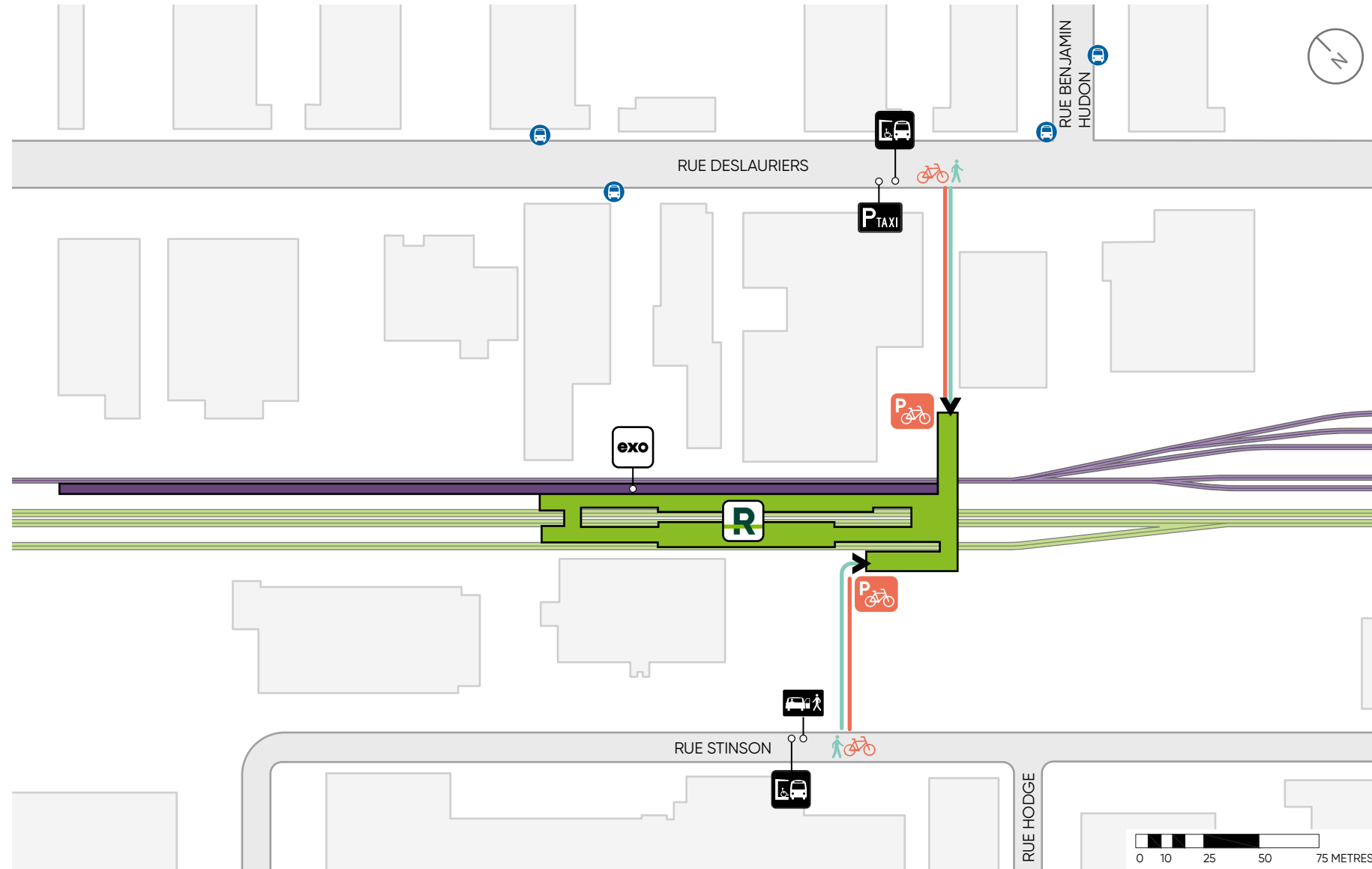


CÔTE-DE-LIESSE STATION

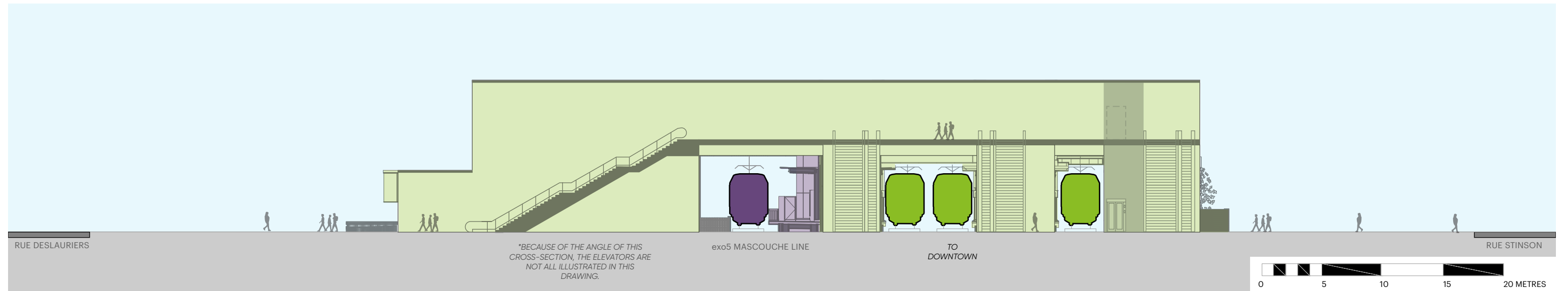
IMPLEMENTATION PLAN (FOR INFORMATIONAL PURPOSES ONLY)



LEGEND

- CÔTE-DE-LIESSE STATION
- REM TRACKS
- EXTERIOR PLATFORM exo5 MASCOUCHE LINE
- EXO TRACKS
- SURFACE PEDESTRIAN TRAFFIC
- UNIVERSAL PEDESTRIAN ACCESS TO THE STATION
- BICYCLE PATH
- BICYCLE PARKING
- BUS STOP*
- KISS-AND-RIDE
- PARKING FOR TAXIS
- ADAPTED TRANSIT

CROSS-SECTION



*TRANSIT ORGANIZATIONS ARE CURRENTLY REVAMPING THEIR NETWORKS TO ACCOMMODATE THE NEW REM SERVICE AREA.