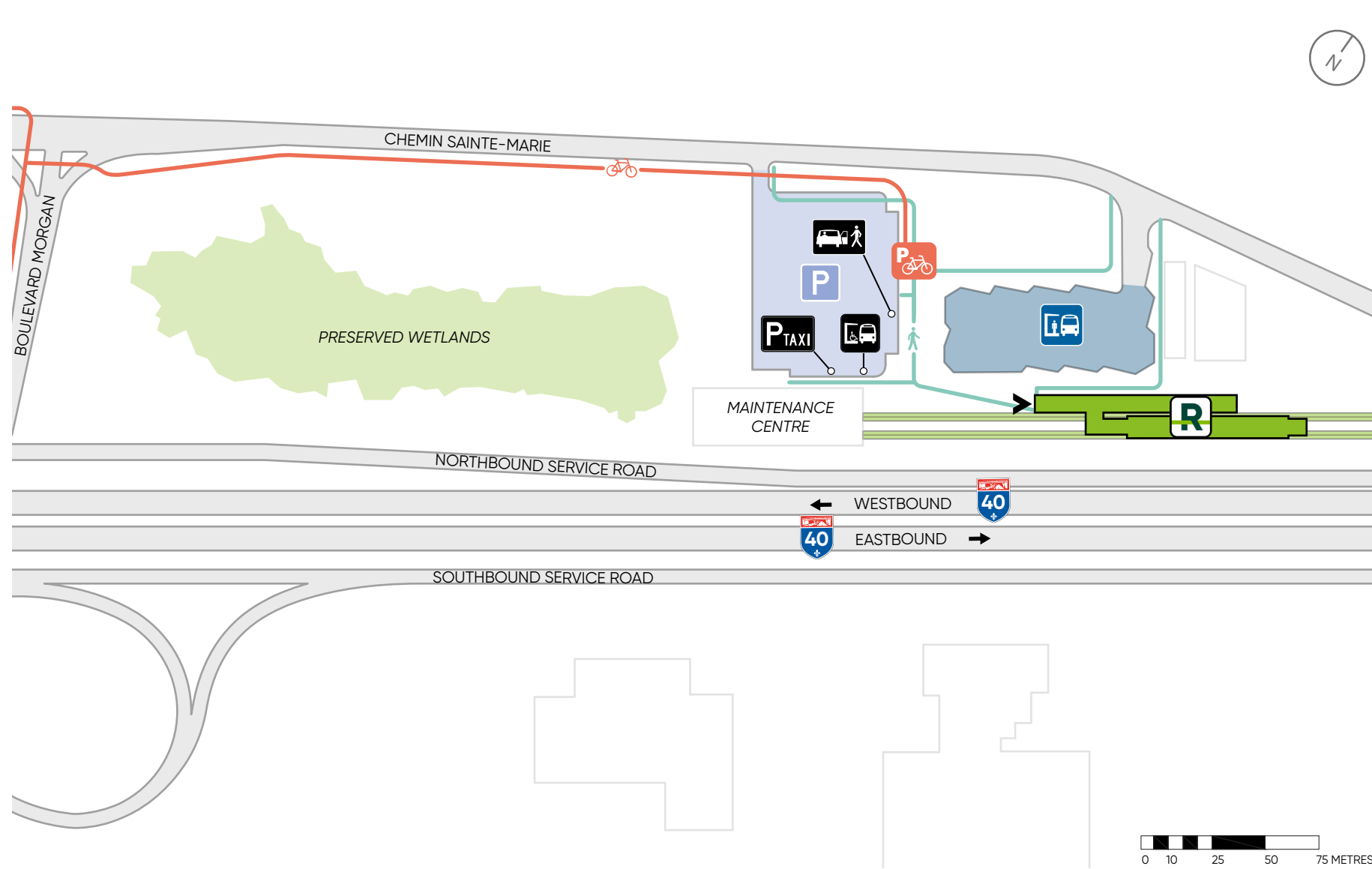


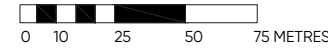
ANSE-À-L'ORME STATION

IMPLEMENTATION PLAN (FOR INFORMATIONAL PURPOSES ONLY)

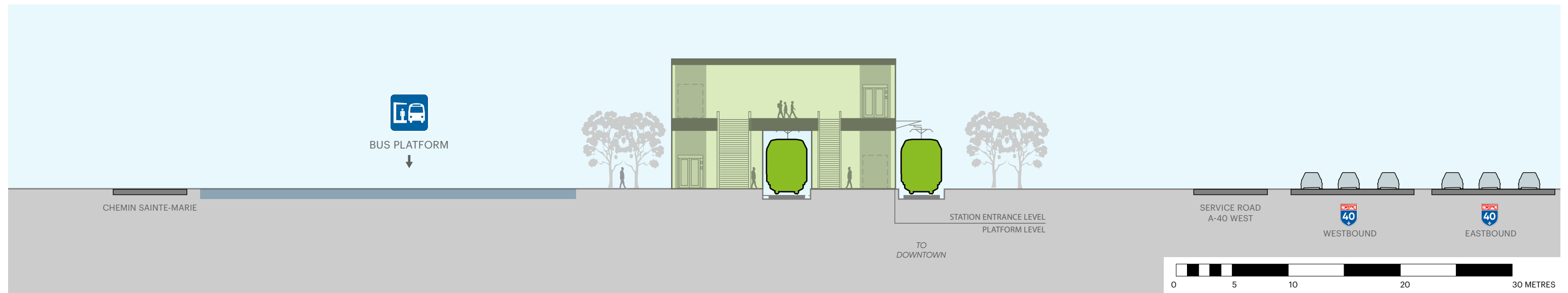


LEGEND

- ANSE-À-L'ORME STATION
- REM TRACKS
- SURFACE PEDESTRIAN TRAFFIC
- UNIVERSAL PEDESTRIAN ACCESS TO THE STATION
- BICYCLE PATH
- BICYCLE PARKING
- BUS PLATFORMS*
- PARK-AND-RIDE LOT
- KISS-AND-RIDE
- PARKING FOR TAXIS
- ADAPTED TRANSIT



CROSS-SECTION



*TRANSIT ORGANIZATIONS ARE CURRENTLY REVAMPING THEIR NETWORKS TO ACCOMMODATE THE NEW REM SERVICE AREA.