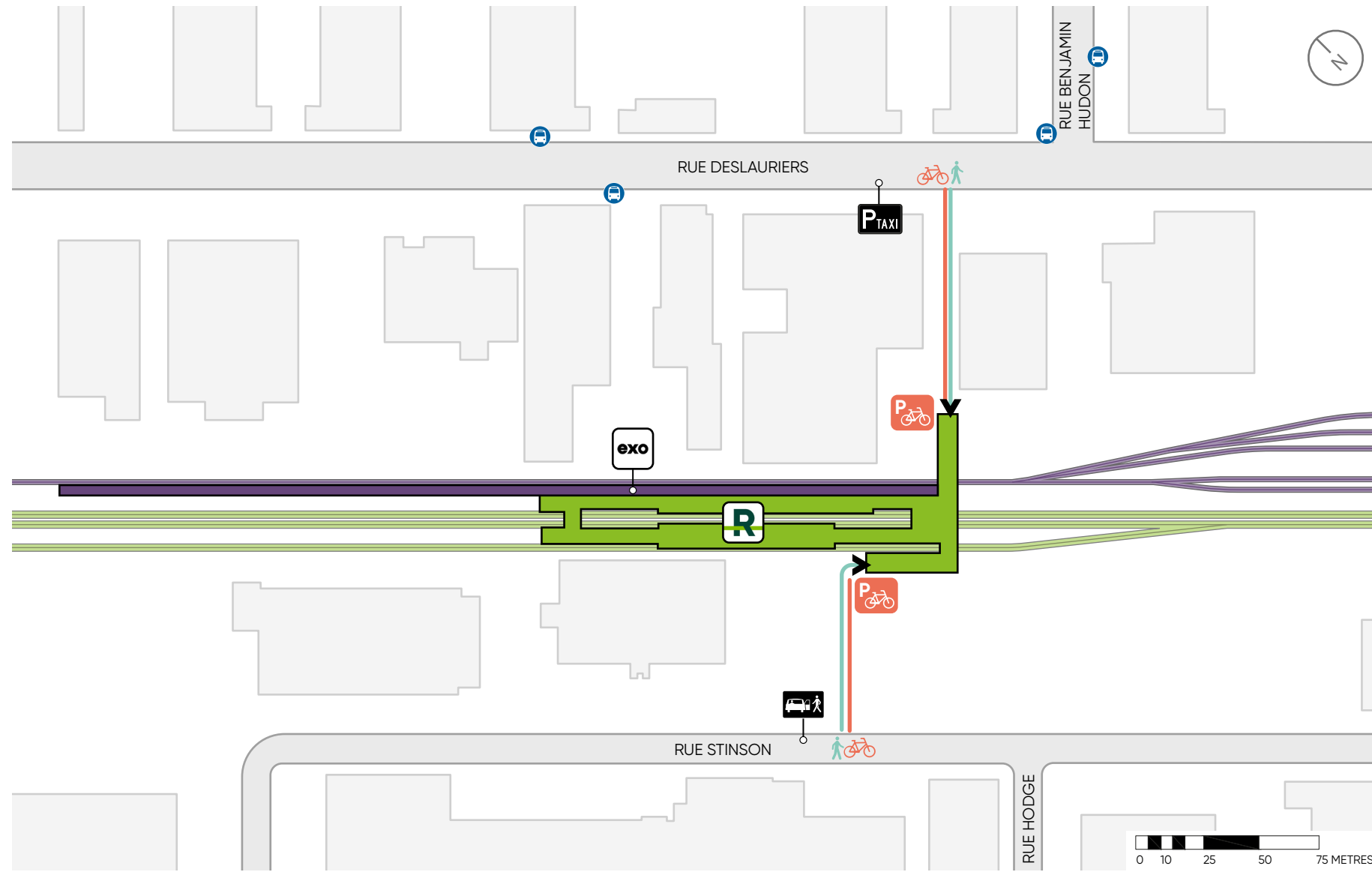














# CÔTE-DE-LIESSE STATION

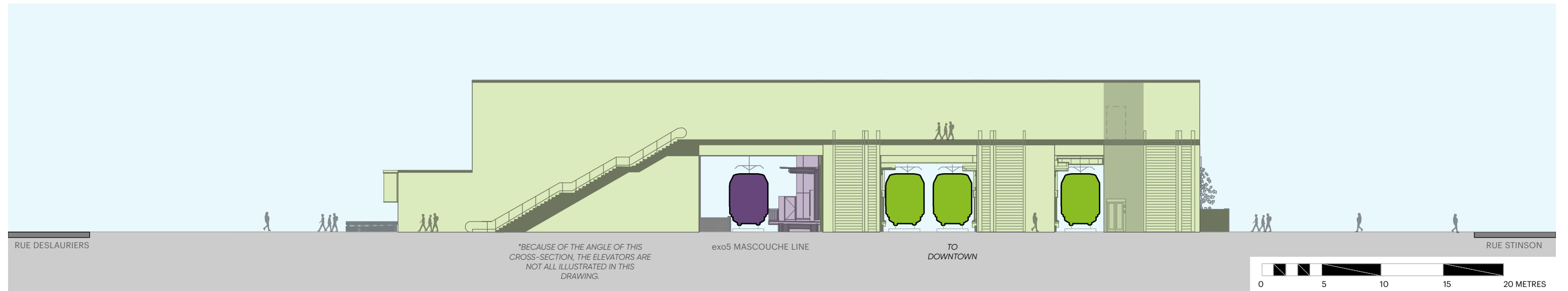
IMPLEMENTATION PLAN (FOR INFORMATIONAL PURPOSES ONLY)



## LEGEND

-  CÔTE-DE-LIESSE STATION
-  REM TRACKS
-  EXTERIOR PLATFORM exo5 MASCOUCHE LINE
-  EXO TRACKS
-  SURFACE PEDESTRIAN TRAFFIC
-  UNIVERSAL PEDESTRIAN ACCESS TO THE STATION
-  BICYCLE PATH
-  BICYCLE PARKING
-  BUS STOP\*
-  KISS-AND-RIDE
-  PARKING FOR TAXIS
-  ADAPTED TRANSIT (LOCATION UNDER STUDY)

## CROSS-SECTION



\*TRANSIT ORGANIZATIONS ARE CURRENTLY REVAMPING THEIR NETWORKS TO ACCOMMODATE THE NEW REM SERVICE AREA.