



Réseau express métropolitain

Presentation of upcoming work
for construction of the Canora
and Mont-Royal Stations

2018-06-19

Réseau
express
métropolitain



Purpose of this meeting



- Inform you of upcoming work over the next several months
- Explain the anticipated impacts and planned mitigation measures
- Present the communication tools available to monitor work progress
- Answer your questions



O Context

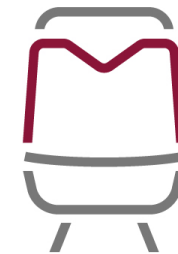
Roles and responsibilities



Réseau
express
métropolitain



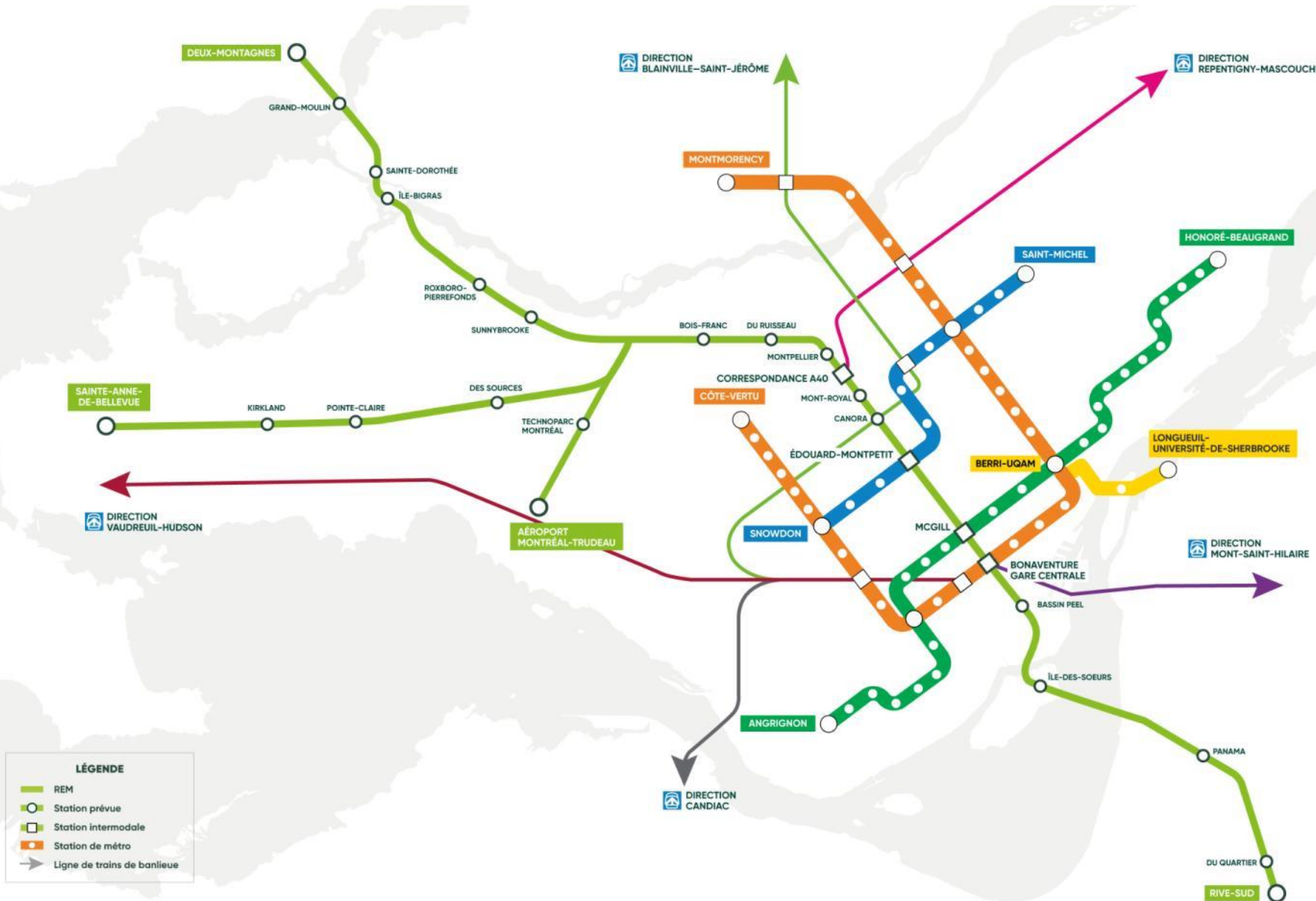
Project office



GROUPE
PMM

A project carried out in close collaboration with numerous partners,
including municipalities and transit authorities

Réseau express métropolitain



Largest public transit project in Quebec in the last 50 years

Light rail
100% electric and automated

26 stations, 67 km

20 hours/day
7 days/week



Impacts on the Deux-Montagnes line

Impacts on the Deux-Montagnes line

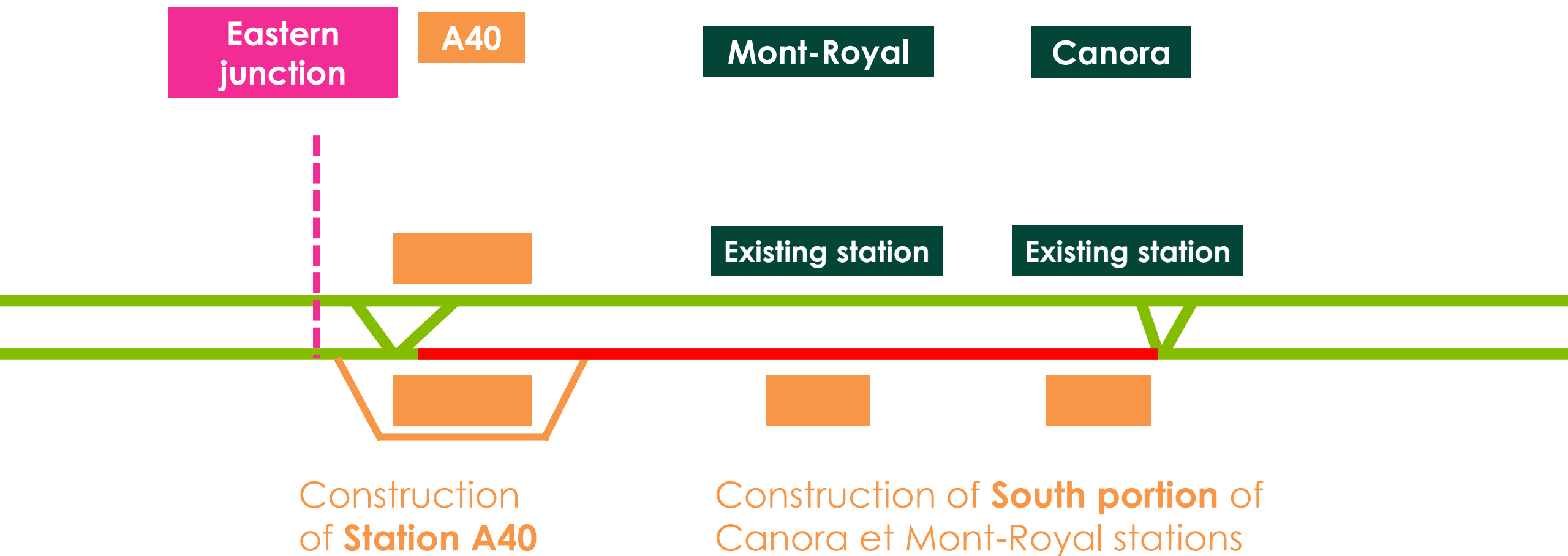


- Construction work requires access to the railway right-of-way of the Deux-Montagnes line
- Optimised work and implementation in phases, to minimize impact on users

June 25,
2018

South segment closed off

Changes to the Deux-Montagnes and Mascouche schedules



Spring
2019

North segment closed off

Changes to the Deux-Montagnes and Mascouche schedules

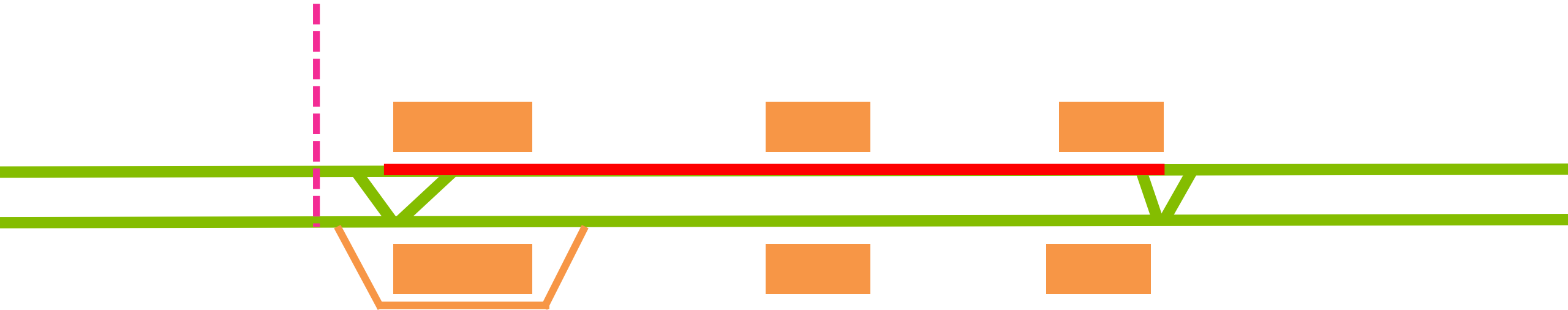


Eastern
junction

A40

Mont-Royal

Canora



Construction
of **Station A40**

Construction of **South and North
portions** of Canora et Mont-Royal
stations

2020: intensive work between Du Ruisseau and Central Station



Alternative transit solutions to implement

- The Autorité régionale de transport métropolitain (ARTM) is responsible for coordinating and implementing alternative measures.
- All transit authorities, along with the MTMDET and municipalities are working closely to find the best solutions.
- Alternative measures will be announced to users in the **fall of 2019**.



Upcoming work

Project status

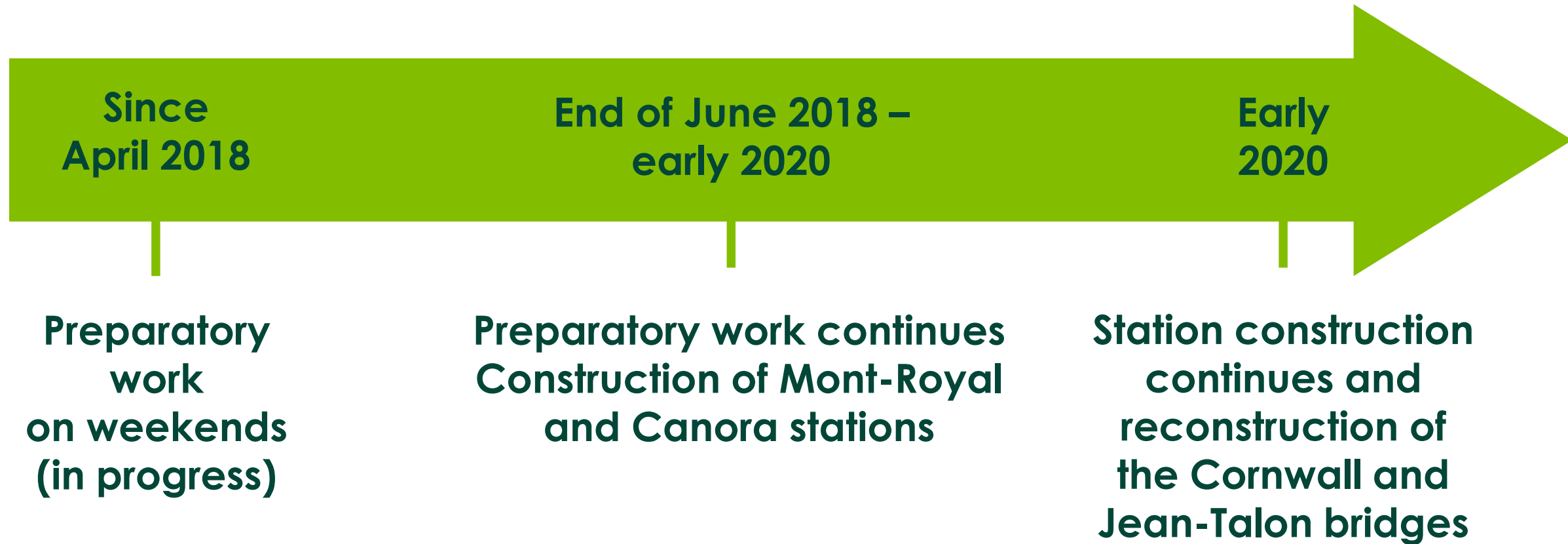


- Contract signed with the consortiums on April 12, 2018
- Design-build concept
- Preparatory fieldwork since April 2018

Anticipated work sequence



Three primary stages, based on the Deux-Montagnes Line service interruptions and access to the railway right-of-way:



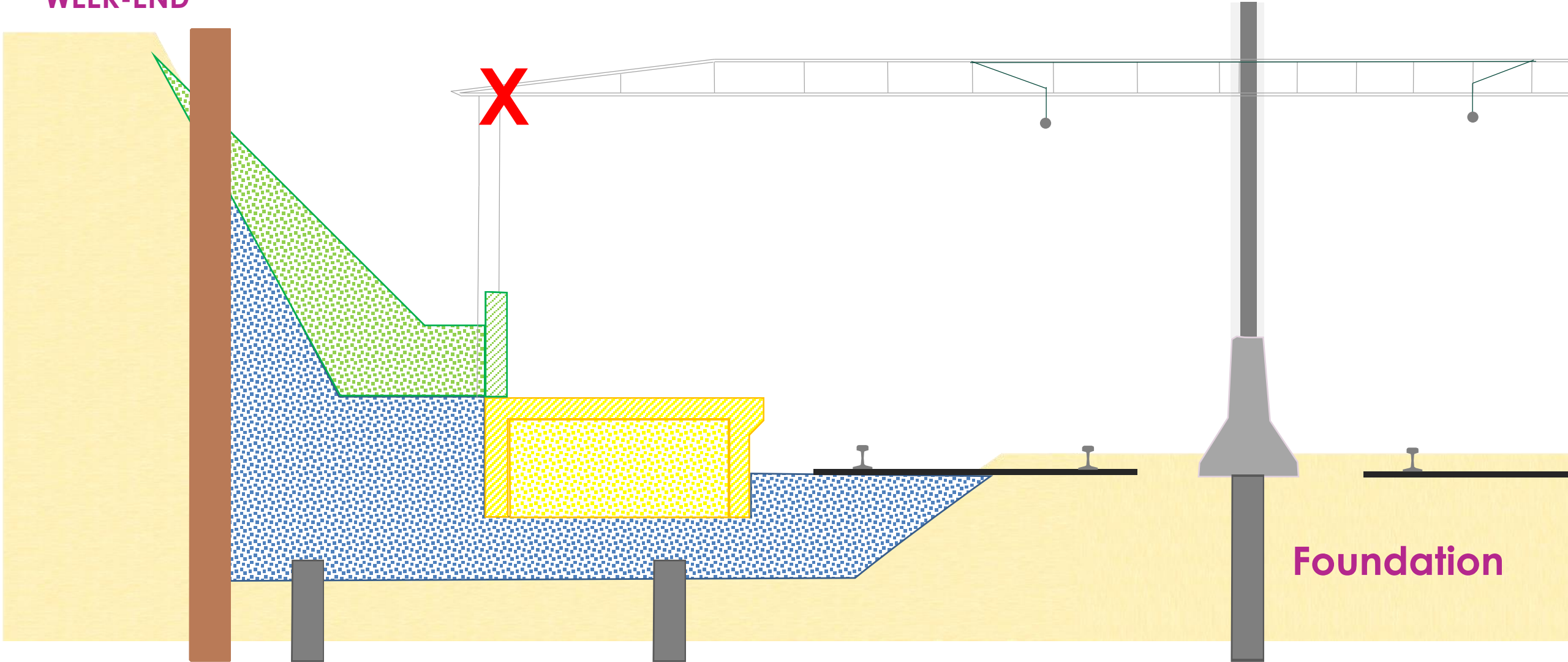
Anticipated work sequence in the short term



Legend:

WEEK

WEEK-END



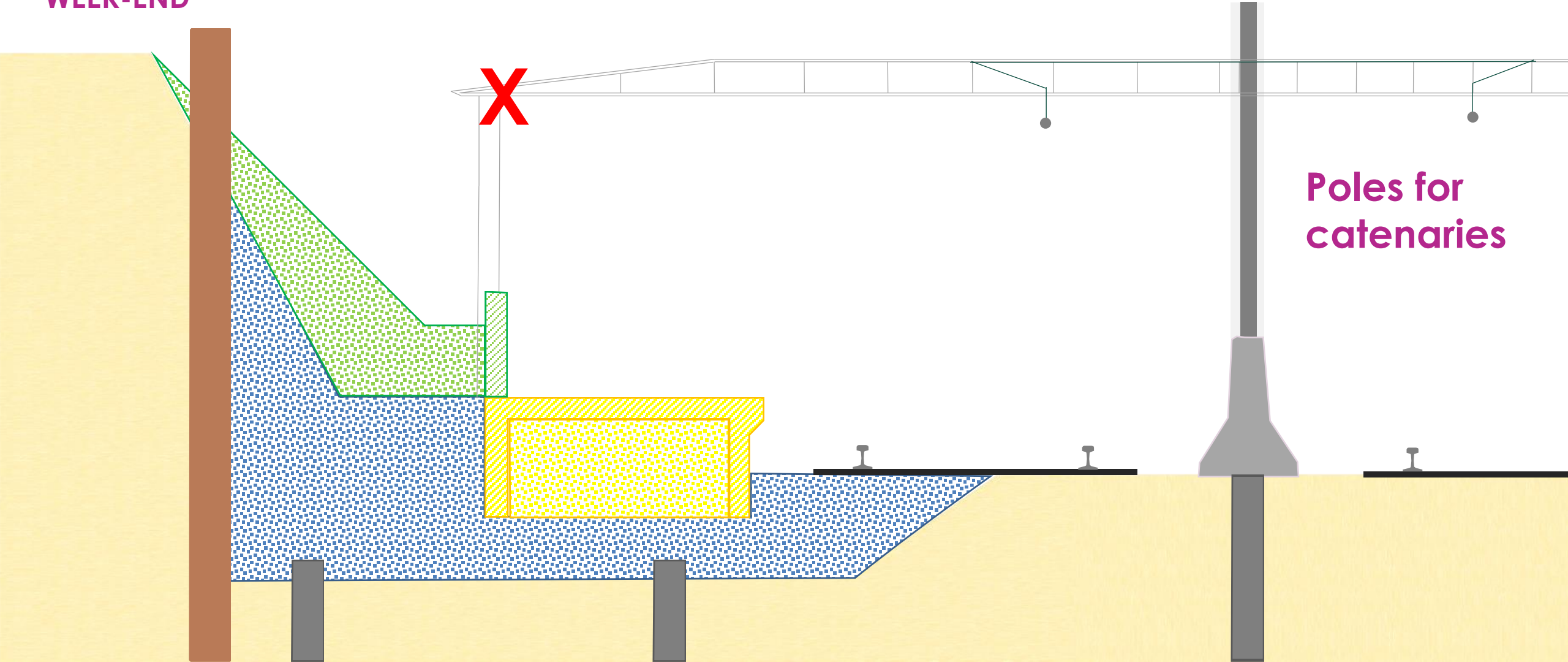
Anticipated work sequence in the short term



Legend:

WEEK

WEEK-END



Anticipated work sequence in the short term

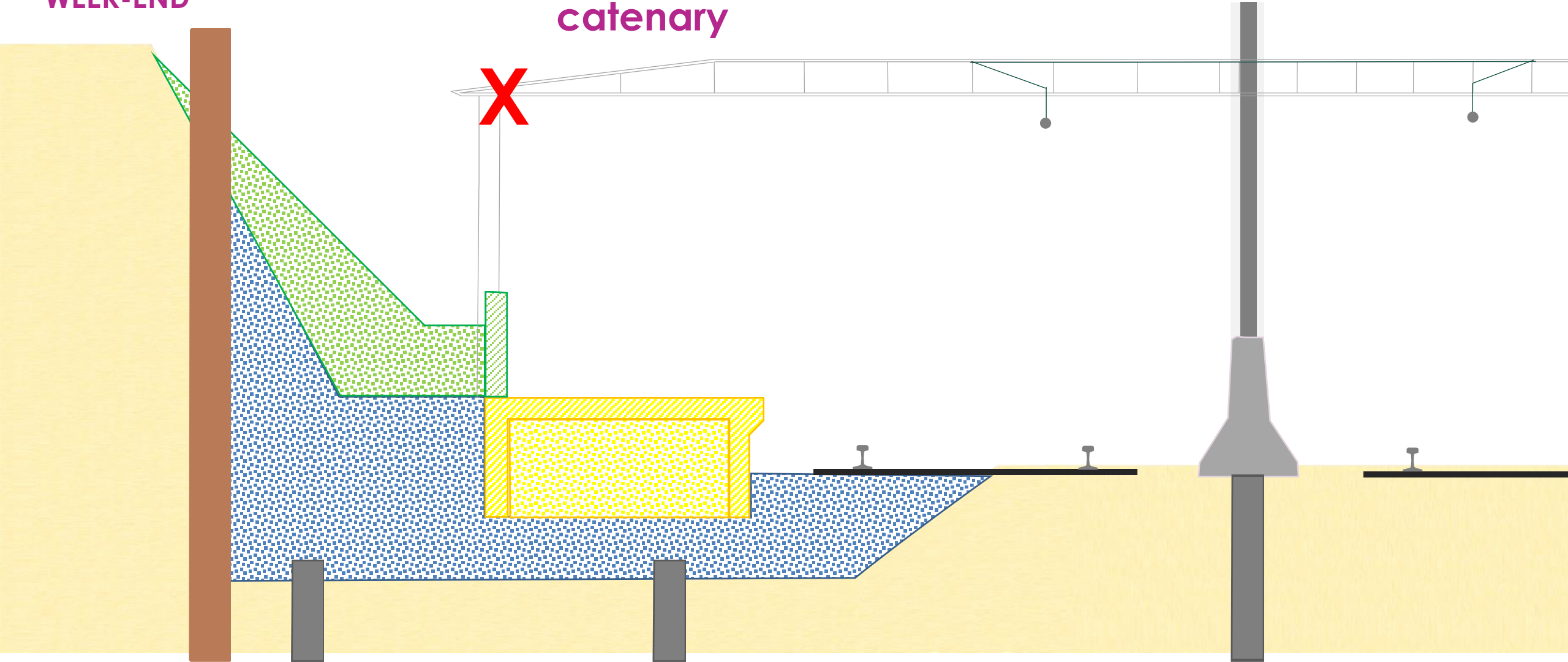


Legend:

WEEK

WEEK-END

Removal existing
catenary



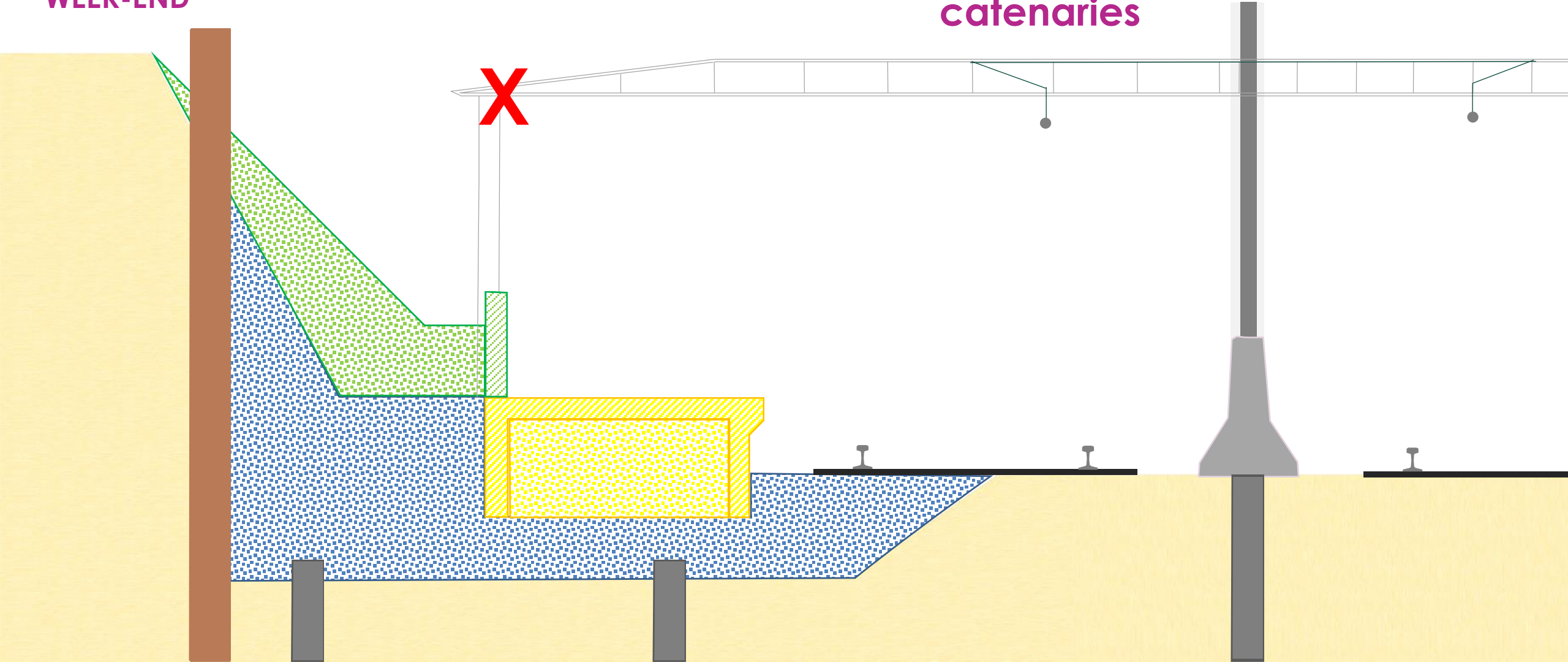
Anticipated work sequence in the short term



Legend:

WEEK

WEEK-END



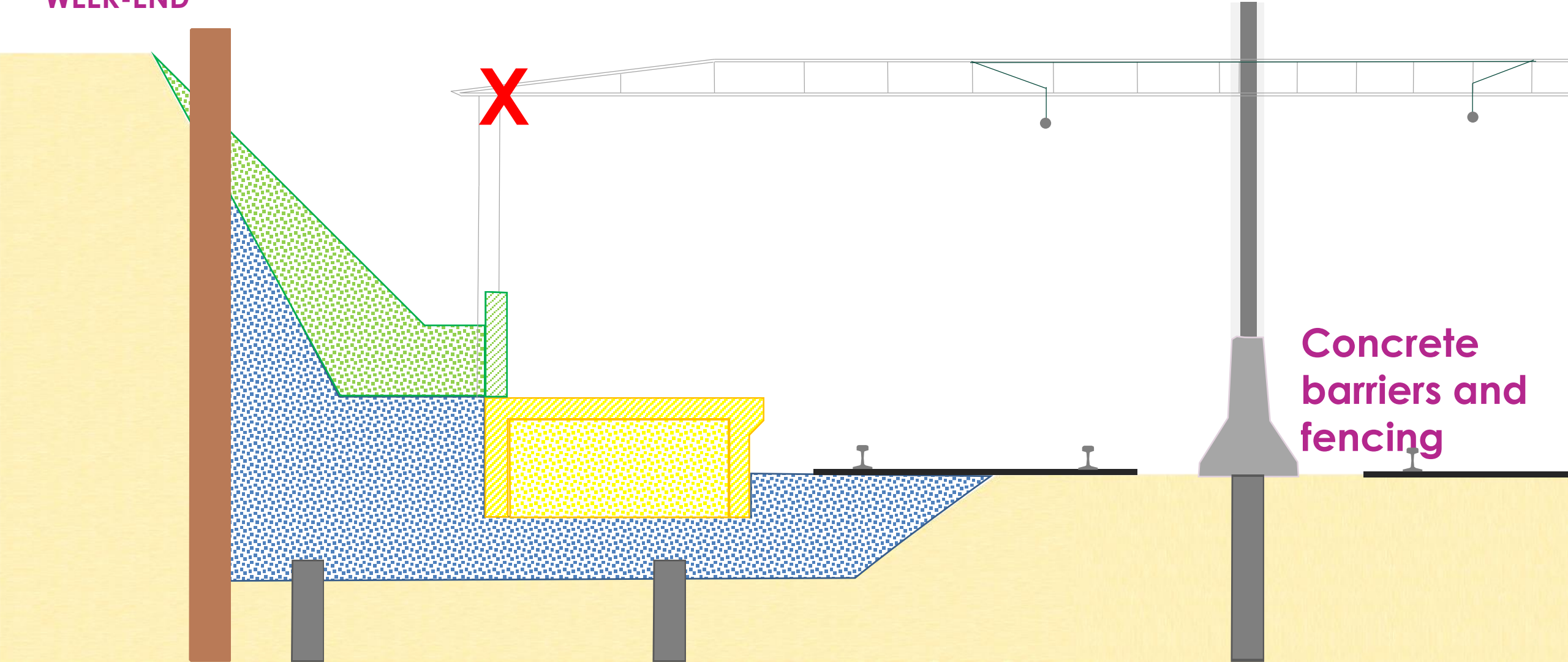
Anticipated work sequence in the short term



Legend:

WEEK

WEEK-END



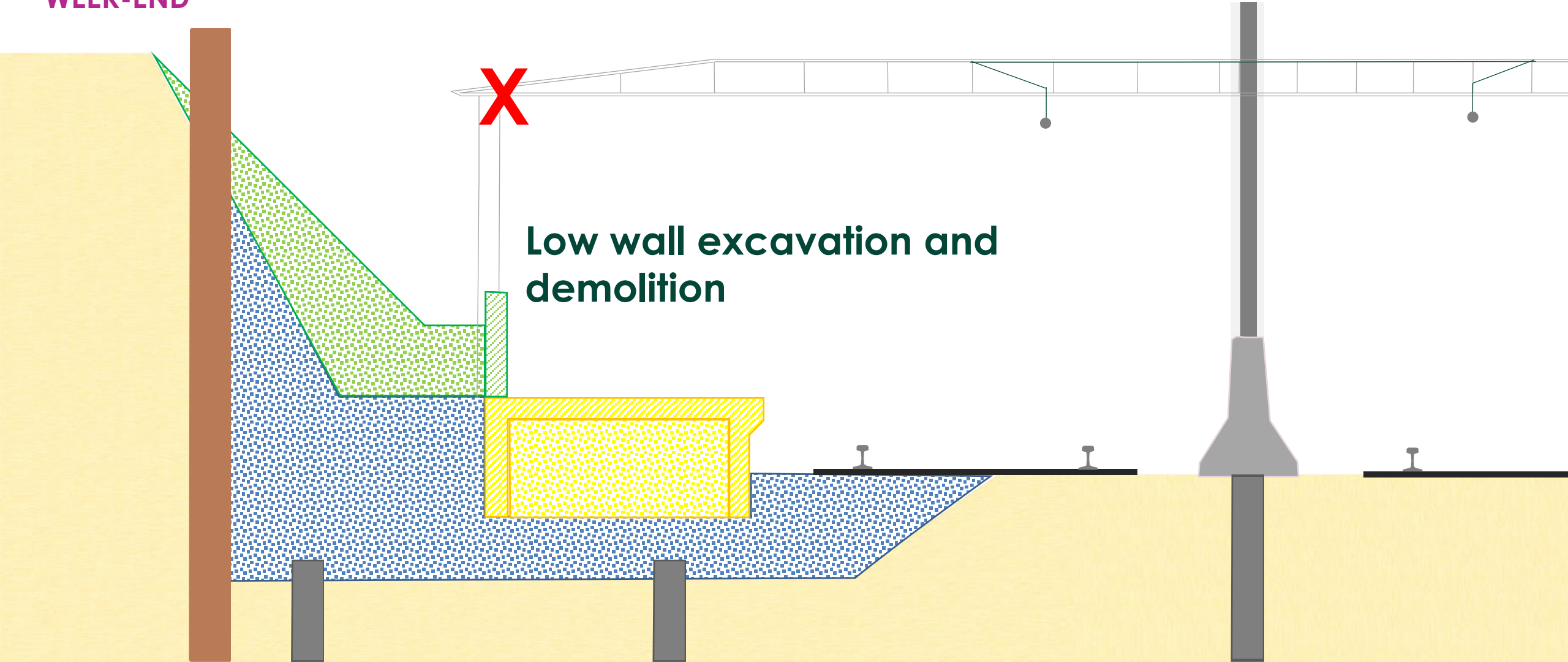
Anticipated work sequence in the short term



Legend:

WEEK

WEEK-END



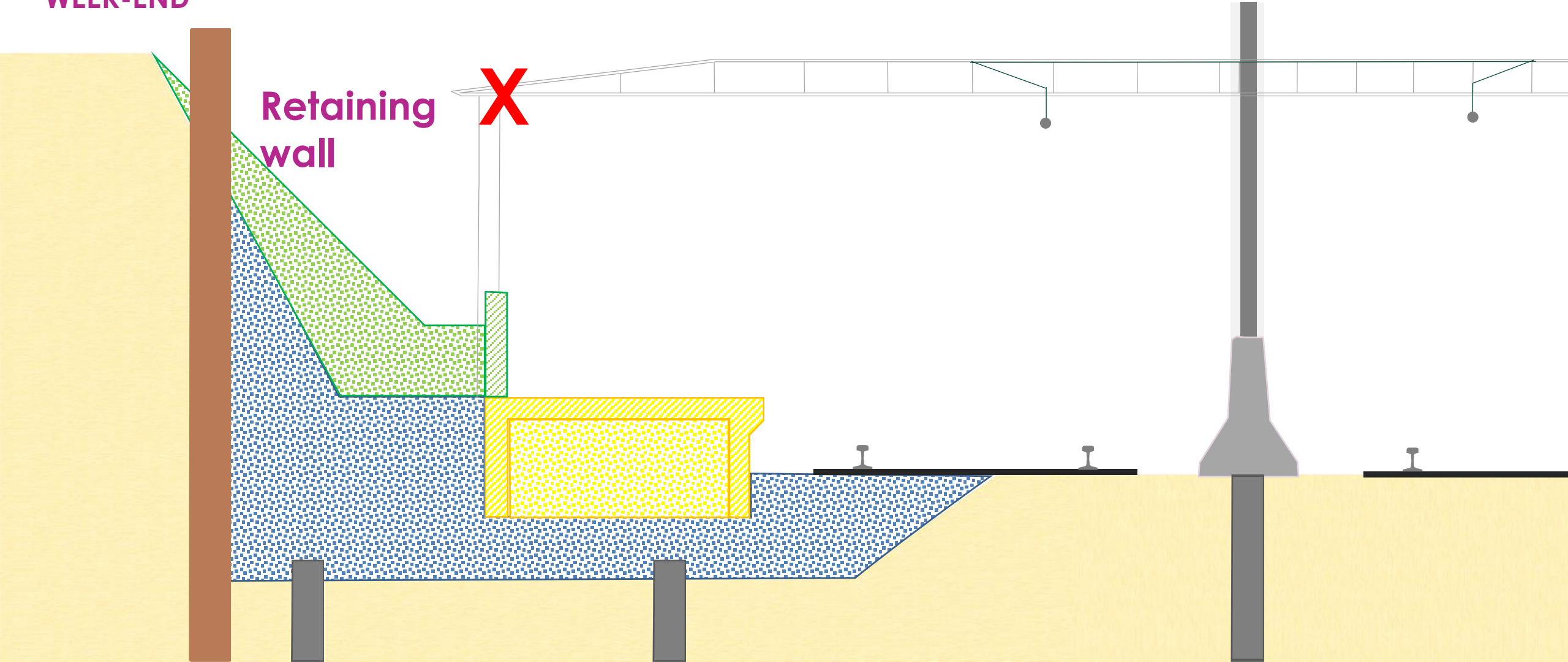
Anticipated work sequence in the short term



Legend:

WEEK

WEEK-END



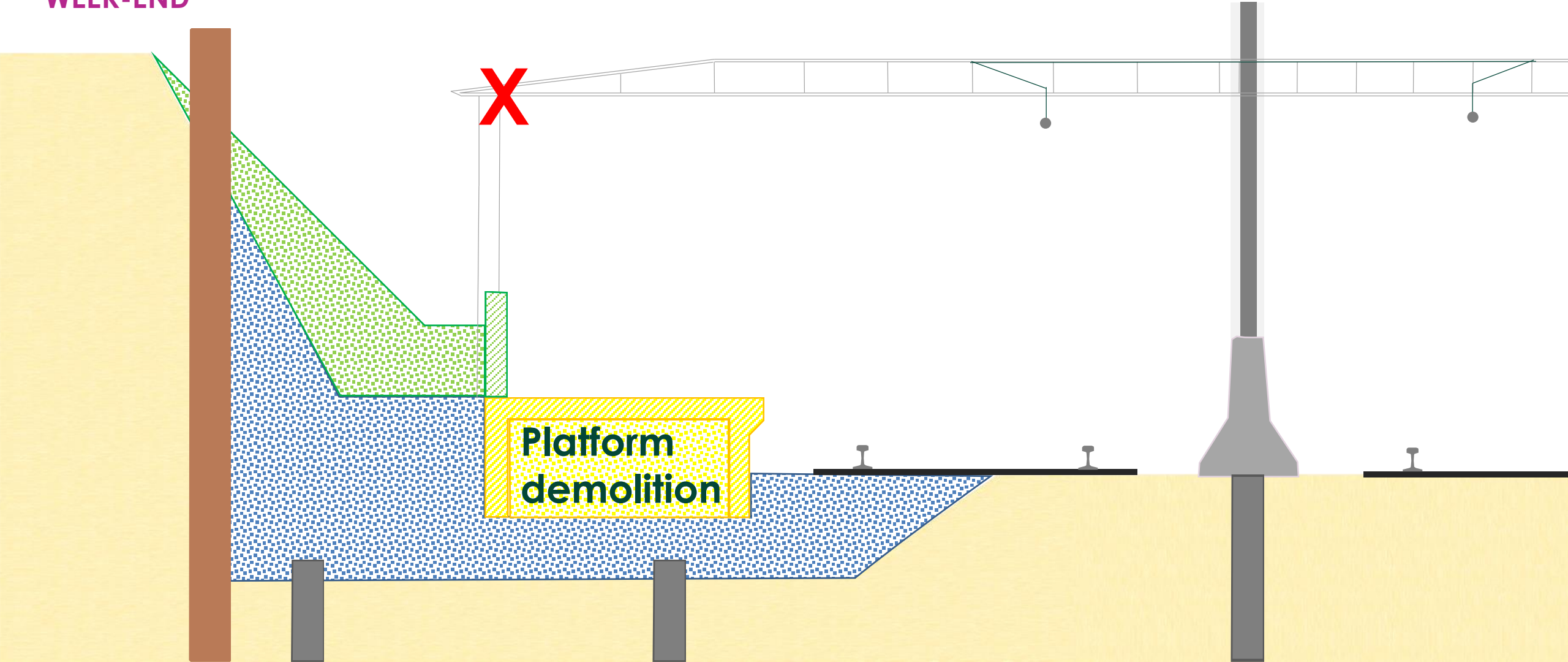
Anticipated work sequence in the short term



Legend:

WEEK

WEEK-END



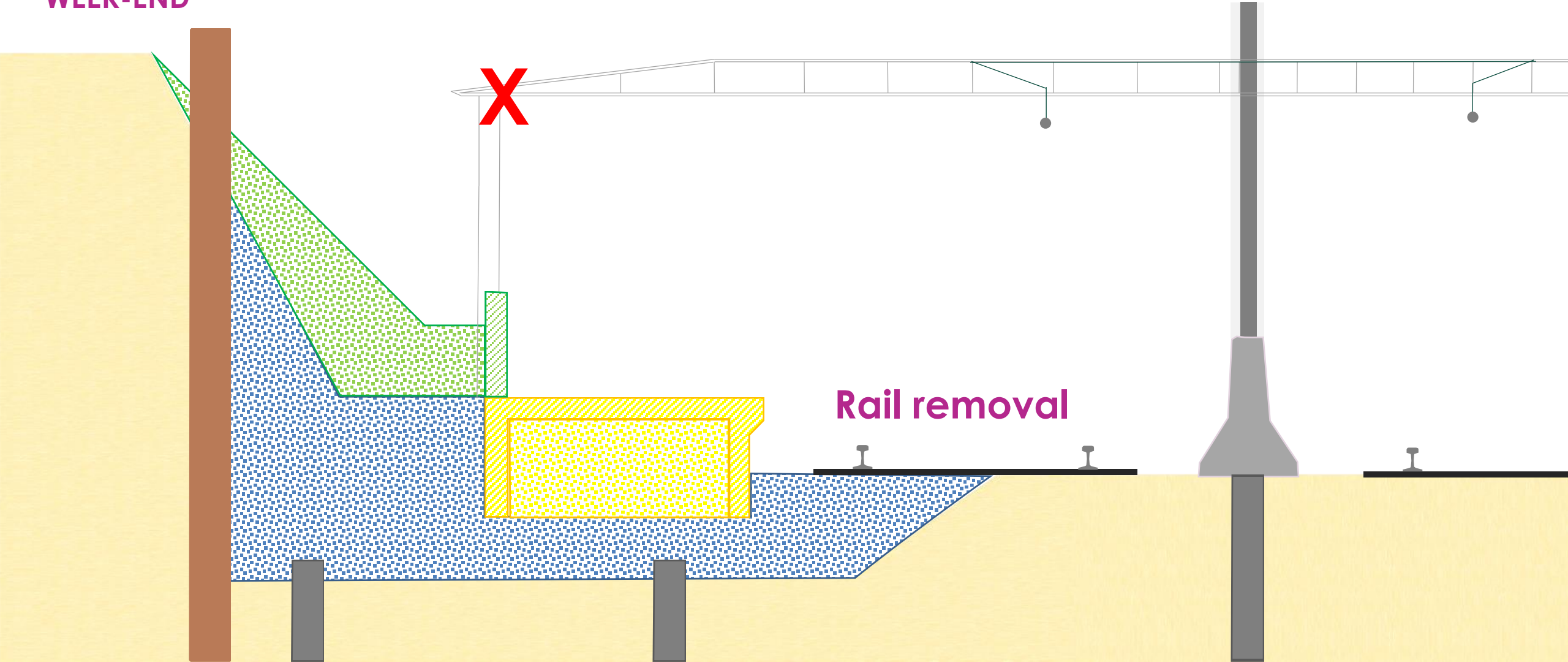
Anticipated work sequence in the short term



Legend:

WEEK

WEEK-END



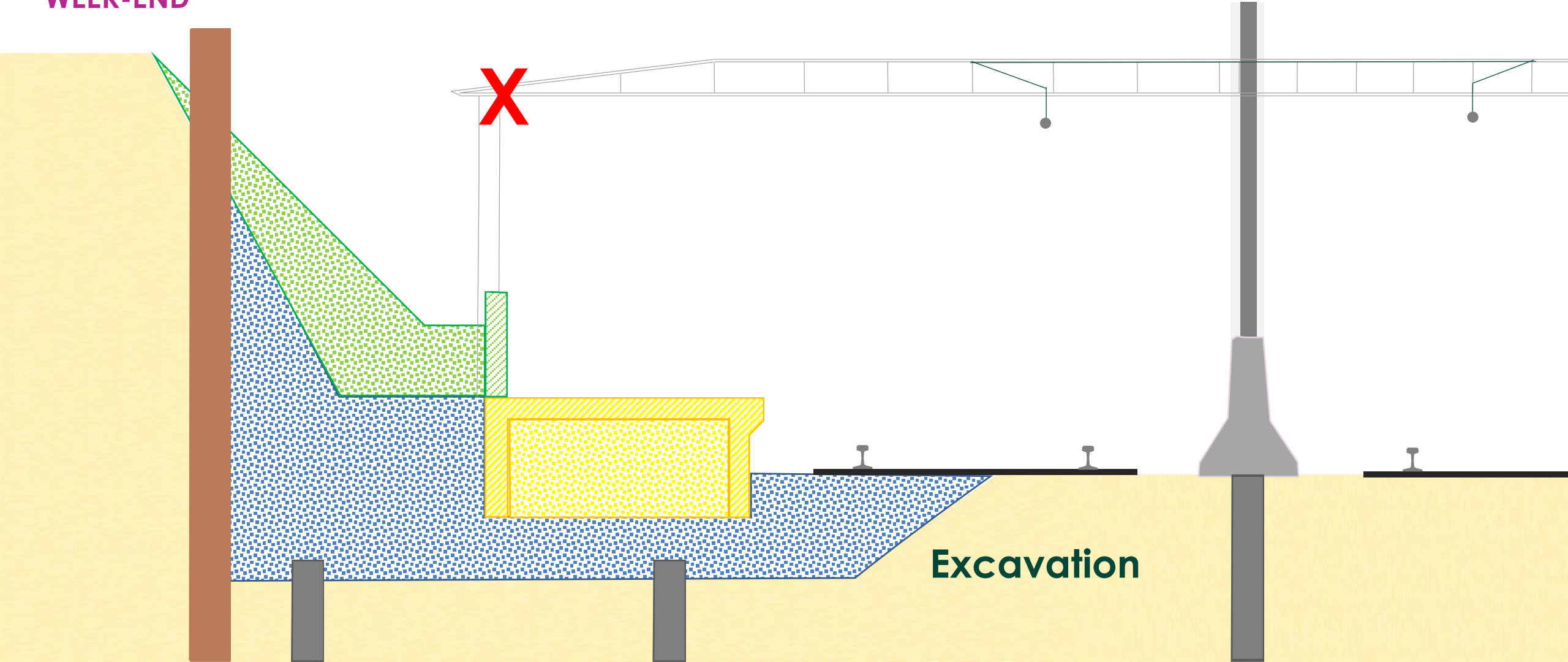
Anticipated work sequence in the short term



Legend:

WEEK

WEEK-END



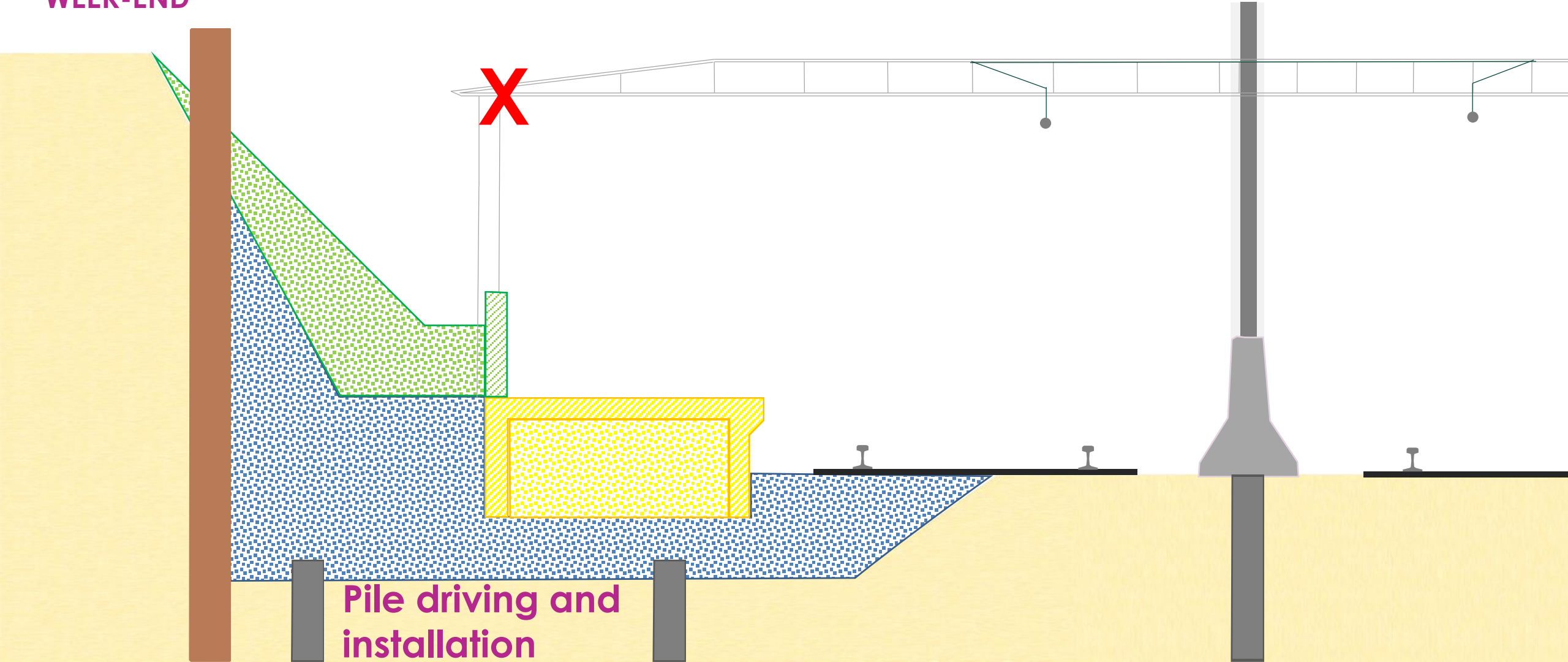
Anticipated work sequence in the short term



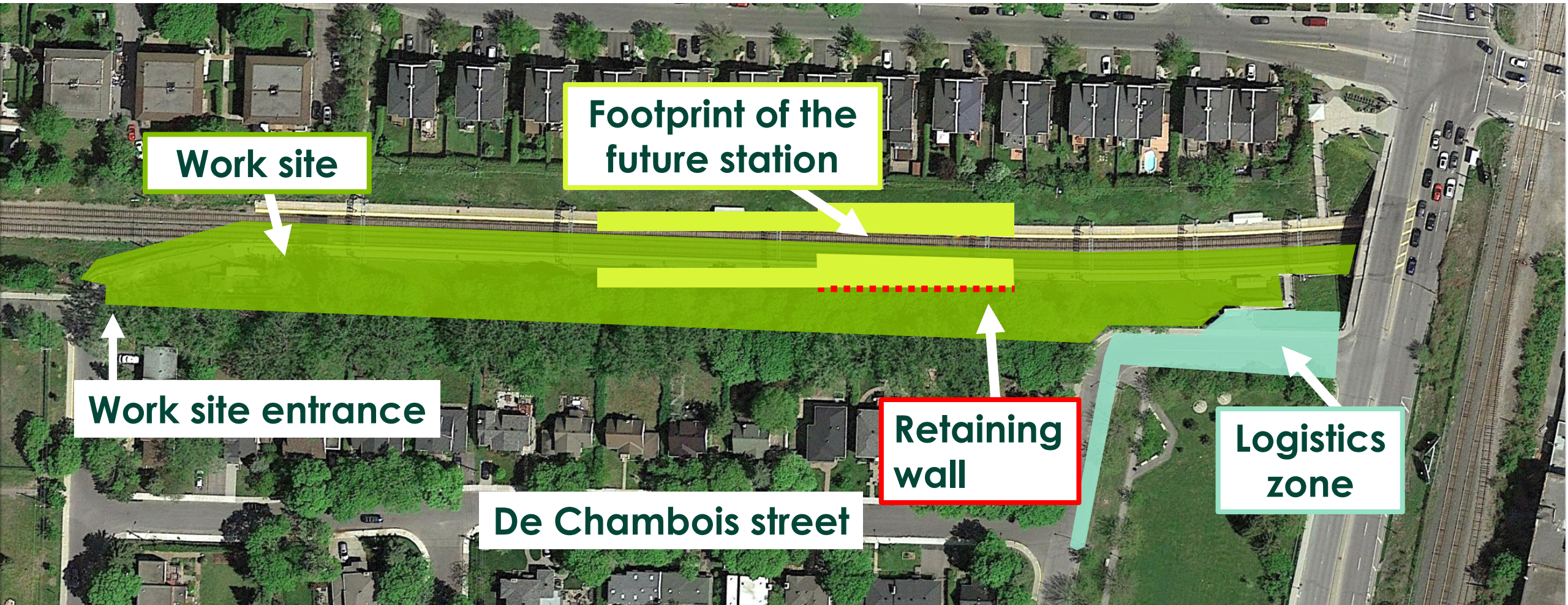
Legend:

WEEK

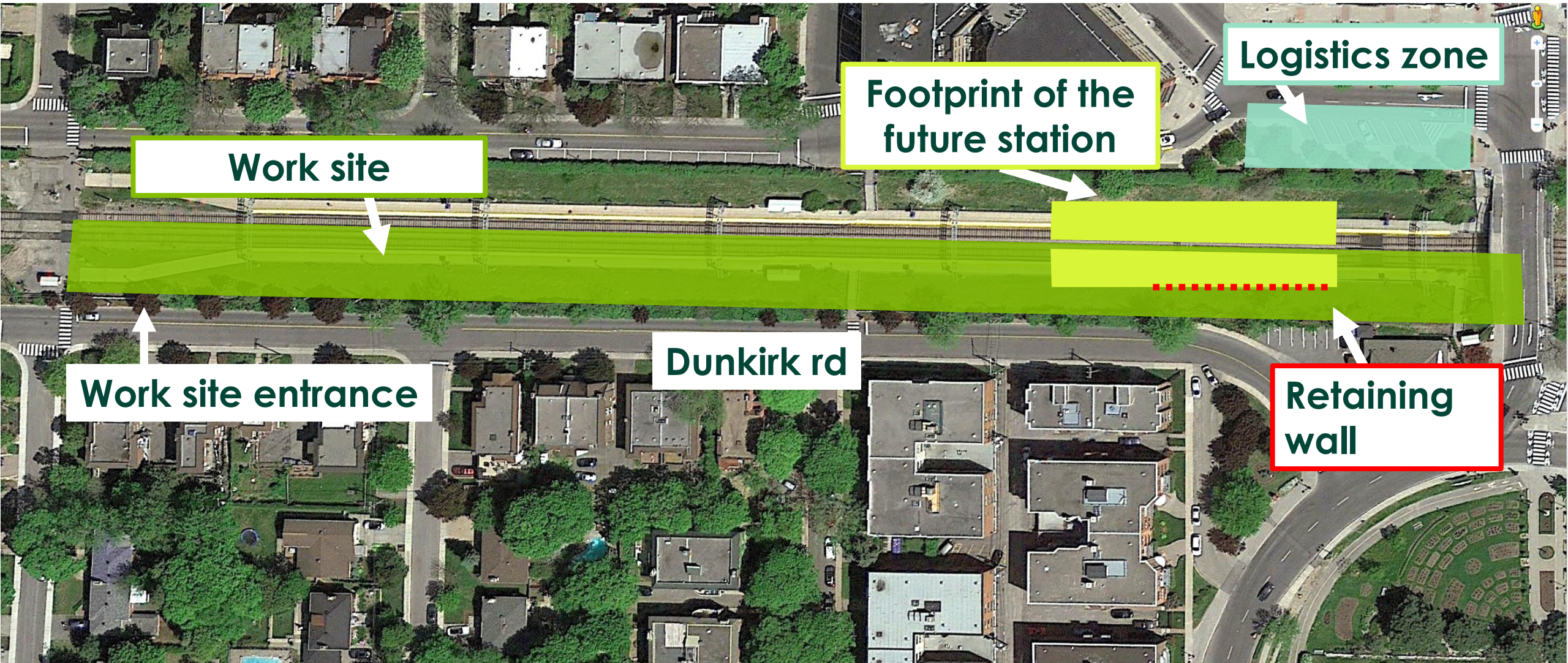
WEEK-END



Canora Station – Work site



Mont-Royal Station – Work site





Impacts and mitigation measures

Anticipated impacts

- Noise
- Vibration
- Dust
- Mobility (pedestrians, cyclists and vehicular traffic)

Objective:
minimize impact
on surrounding residents
by implementing all
appropriate measures

Anticipated impacts



Important activities :

- Construction of retaining walls
- Demolition work (platforms and low walls)
- Pile installation for stations

Noise criteria for work on stations



| Period | Noise criteria |
|---------------------------------------|---|
| Day (7 a.m. to 7 p.m.) | <u>Higher between:</u> 55 dBA or ambient noise prior to work <i>Average over a 12-hour work period</i> |
| Evening (7 p.m. to 10 p.m.) | <u>Higher between:</u> 45 dBA or ambient noise prior to work <i>Average over a 1-hour work period</i> |

Noise management – Mitigation measures



**Acoustic screen for
bored piles**



**Acoustic
jacket**



Noise reduction at the source

Noise management – Mitigation measures



Monitoring and supervision program throughout the work:

- Monitoring of sound levels during construction to ensure noise criteria are met
- Dedicated supervisors
- Continuously raising workers' awareness

Vibration management – Mitigation measures



- Resources dedicated to modelling seismic effects
- Soil characterization through geotechnical drilling to adapt work methods
- Vibration control using appropriate techniques

Progressive equipment power increase



Real-time measure and analysis



Ensuring compliance with the thresholds

Dust management – Mitigation measures



Mitigation measures (sprayers, dust-control products)

Monitoring and supervision program throughout the works:

- Installation of sensors for continuous measurement
- Resources dedicated to monitoring emissions reports



Mobility management – Mitigation measures



- **Objective:** identify the most direct and safest trucking and detour routes possible
- Traffic Management Plan currently being discussed with the Cities of Montréal, Mont-Royal and the borough of Côte-des-Neiges – Notre-Dame-de-Grâce

Noise level during operations – status

- **In progress:** noise measurement campaign
- **Fall 2018:** modelling will take place in the fall of 2018
- **Winter 2018:** appropriate mitigation measures will be determined

Implementation of a work group and presentation in the next public meeting



Communication during the works

information tools



For complete information on upcoming work, visit rem.info/en

- Citizens space – Montréal (Centre and Airport)
 - Interactive map
 - Newsletters, Notices of work and SMS alerts
-

Contact us:

- **1 833 rem-info** (736-4636)
- **info@rem.info**
- Social media: **@remgrandmtl**

Activities and dedicated resources

- **Information sessions**
- **Neighbourhood committees**
- **Complaint management**
- **Presence on the ground**

Implementation of a neighbourhood committee

- Objective: information on upcoming **work**, as well as **impacts** and planned **mitigation measures**
 - Meetings an average of every four-six weeks during the works, in the evenings
- 10 to 12 people
- Composed of people representing the community and residents affected

**Interested in being a member of the committee?
Submit your application!**

Implementation of a work group – REM in operation

- Implementation of a work group to deal with mitigation measures for the REM in operation
- Objective: to establish a channel for the collaborative discussion of measures to be implemented
- 5 residents (representative composition)

**Interested in being a member of the committee?
Submit your application!**

Next steps



- Activities scheduled between now and the end of fall:
 - **Ongoing updates** on the works through our various channels
 - **Information kiosk** near the work site this summer
 - Implementation of a **neighbourhood committee and work group this fall**
 - **Informational meetings** to present the work to come this fall
- Continued collaboration with Mont-Royal, the borough and City of Montréal to plan and coordinate works

Réseau
express
métropolitain



REMgrandmtl



REMgrandmtl



1 833 rem-info
(1 833 736-4636)



info@rem.info

rem.info/en

