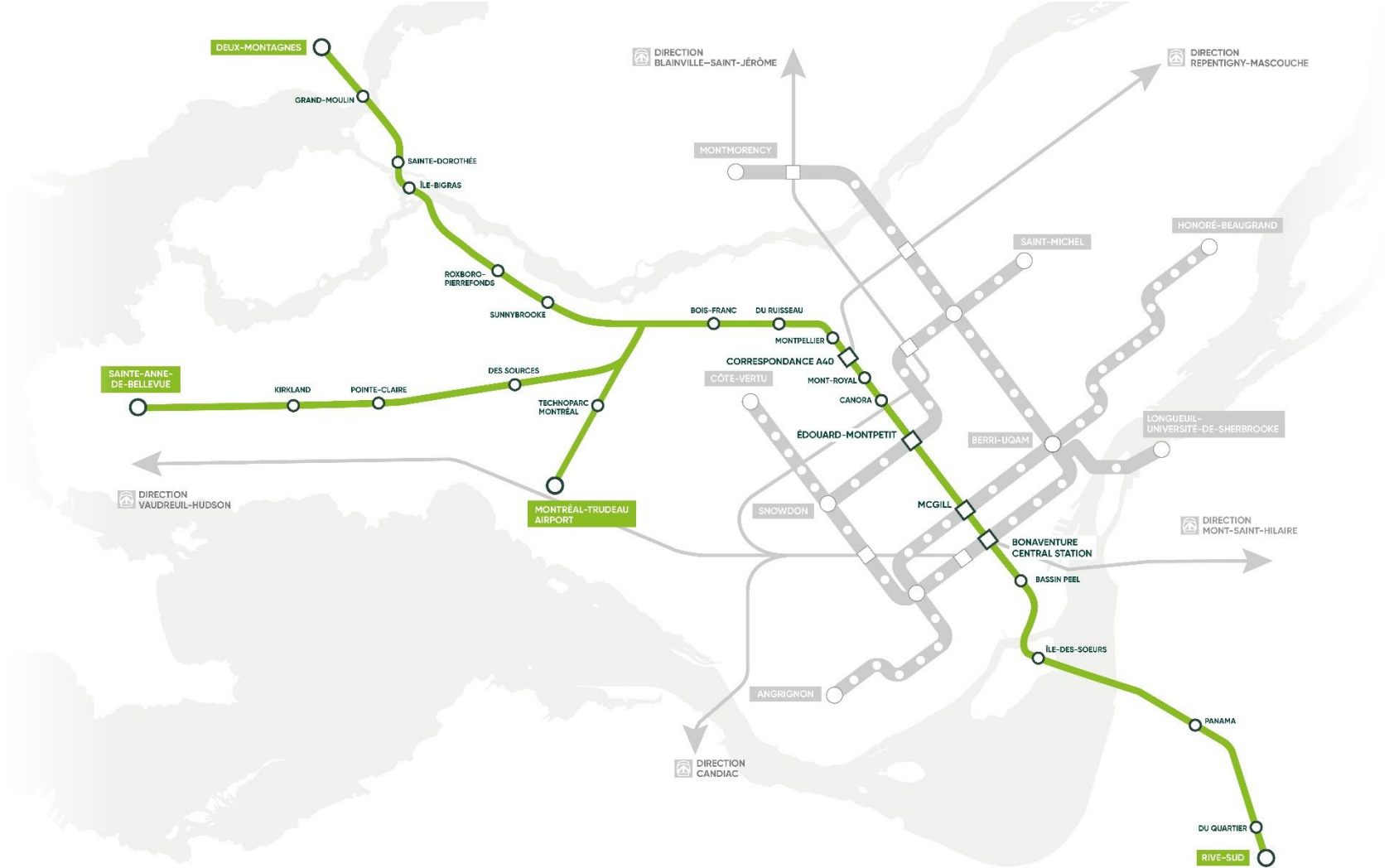
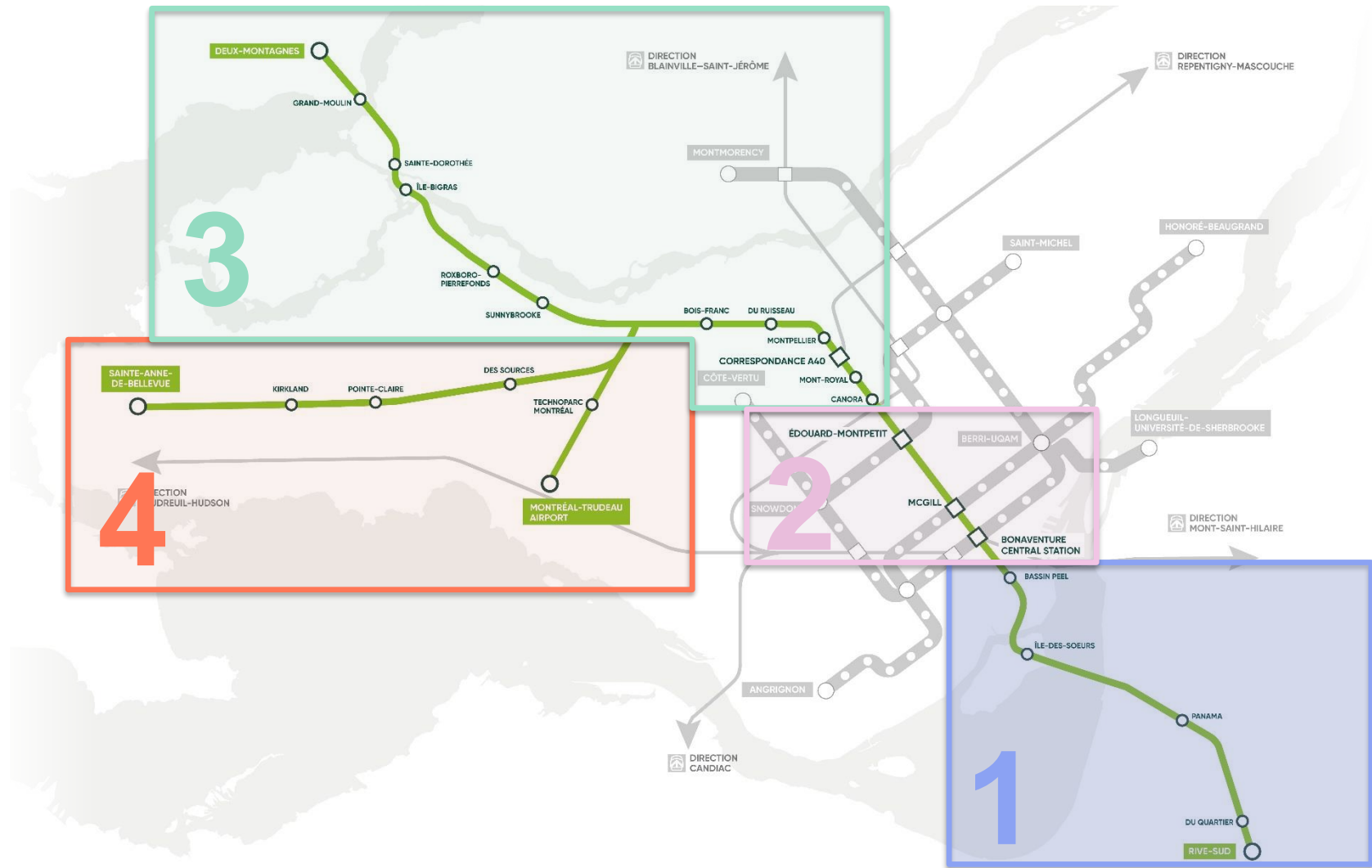


TECHNICAL BRIEFING WORK ON THE RÉSEAU EXPRESS MÉTROPOLITAIN

JUNE 4, 2018





1. SOUTH SHORE



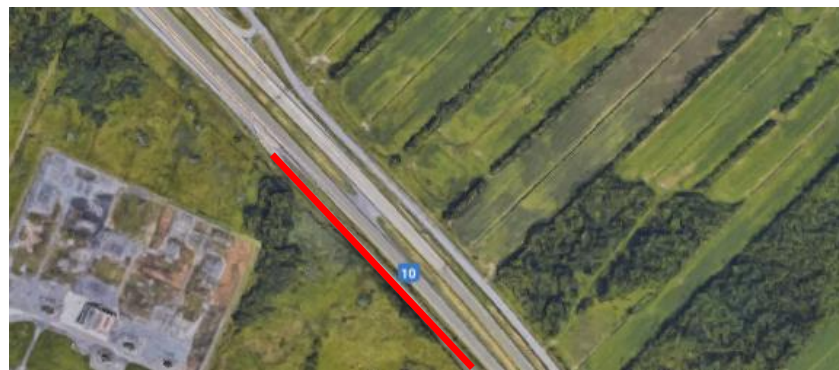
End of June 2018

Temporary reconfiguration of Highway 10 (Sherbrooke direction) Deflection to maintain two lanes per direction



End of June 2018

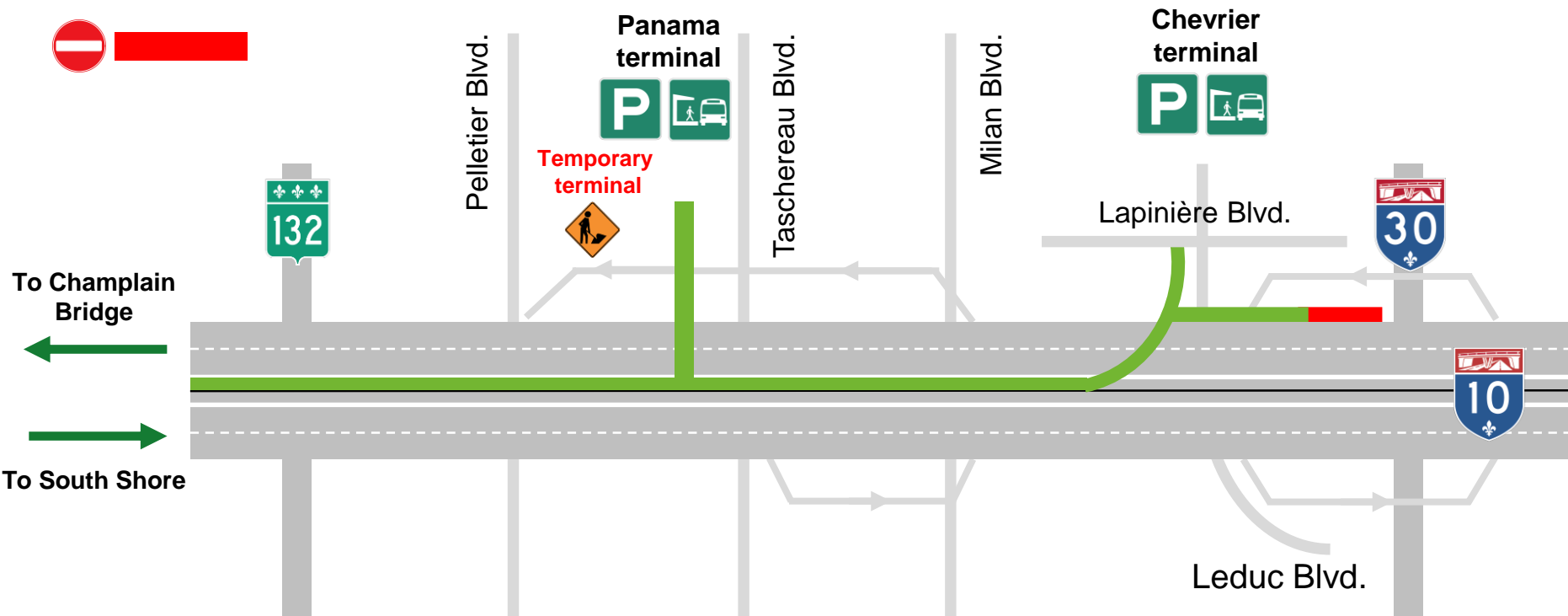
Closure of the Des Prairies Boulevard exit ramp Alternate route using the *Dix-30* exit



End of June 2018

Maintenance of preferred bus accesses

Small stretch of reserved lane removed



2. ÉDOUARD- MONTPETIT

Summer 2018

Marie-Victorin entrance will close **June 16**

Two access will be maintained to reach Édouard-Montpetit station



Station Édouard-Montpetit



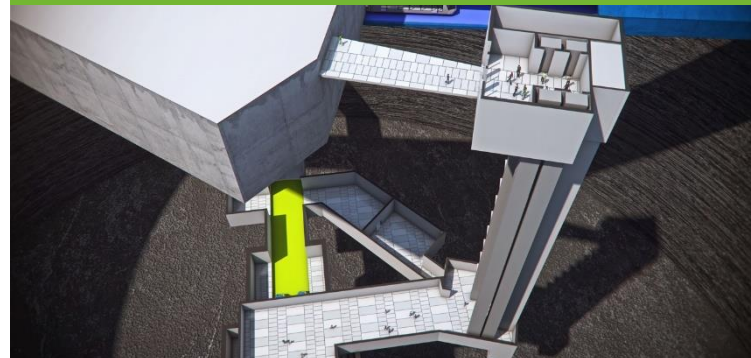
Station located 70 metres beneath Mount Royal



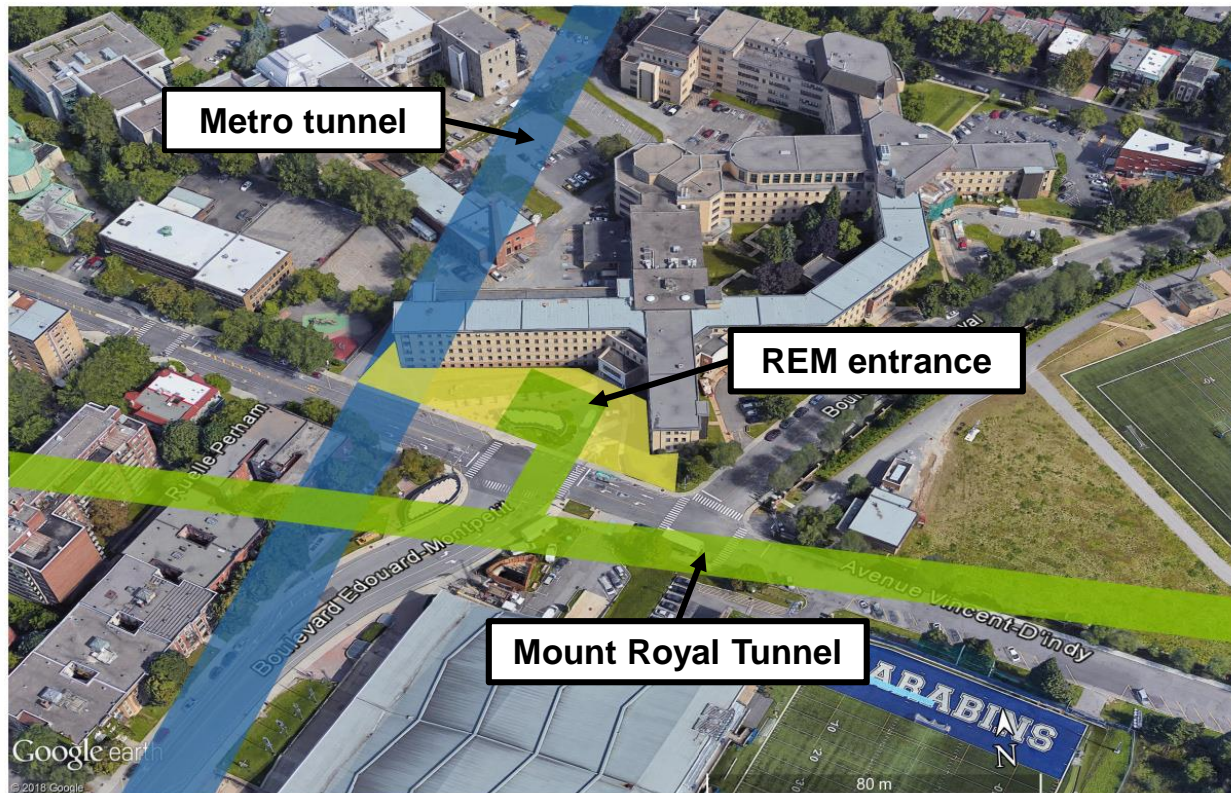
Technical characteristics

- **Depth of the station: 70 metres**
20 floors – second deepest station in North America
- **High capacity elevators**
(5000 people/hour), high frequency and high speed, providing platform access in 20 seconds
- **Excavation of approx. 25,000 to 30,000 m³ of rock**
Excavation methods used will be similar to those used to dig an underground mine

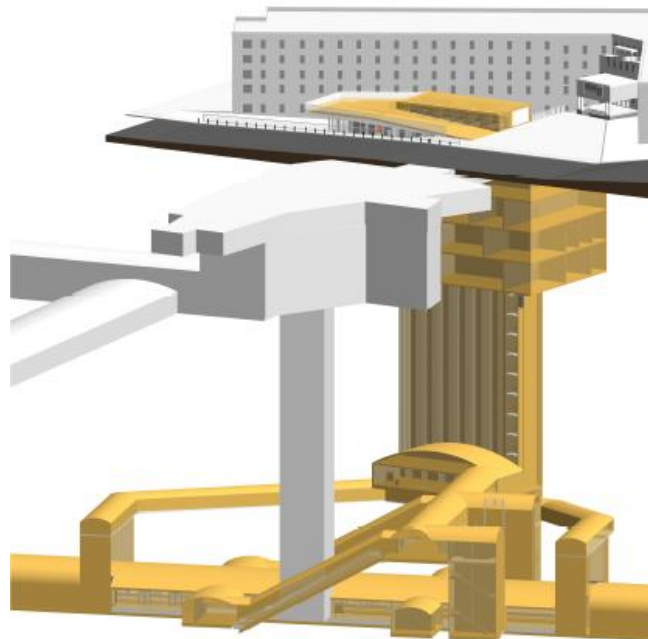
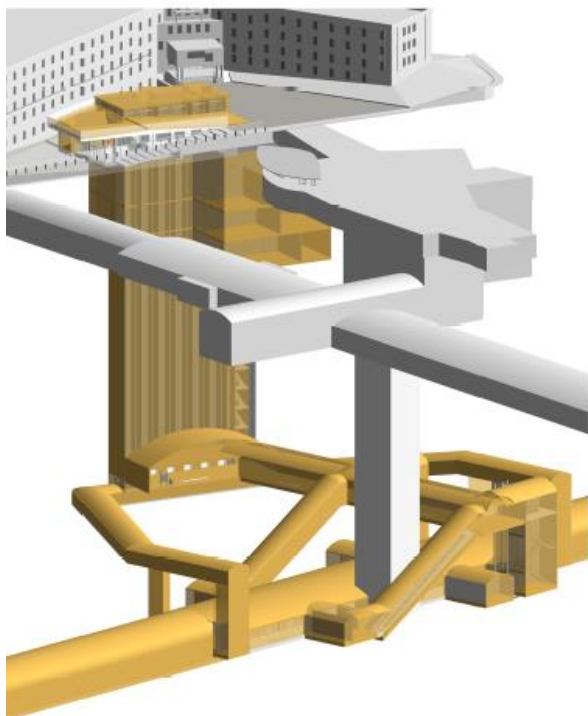
Access by elevator in 20 seconds



Correlation with the tunnel and metro



Perspectives – underground station



** Preliminary station design – final design is still under development*

Anticipated work sequence

Work carried out in different phases:

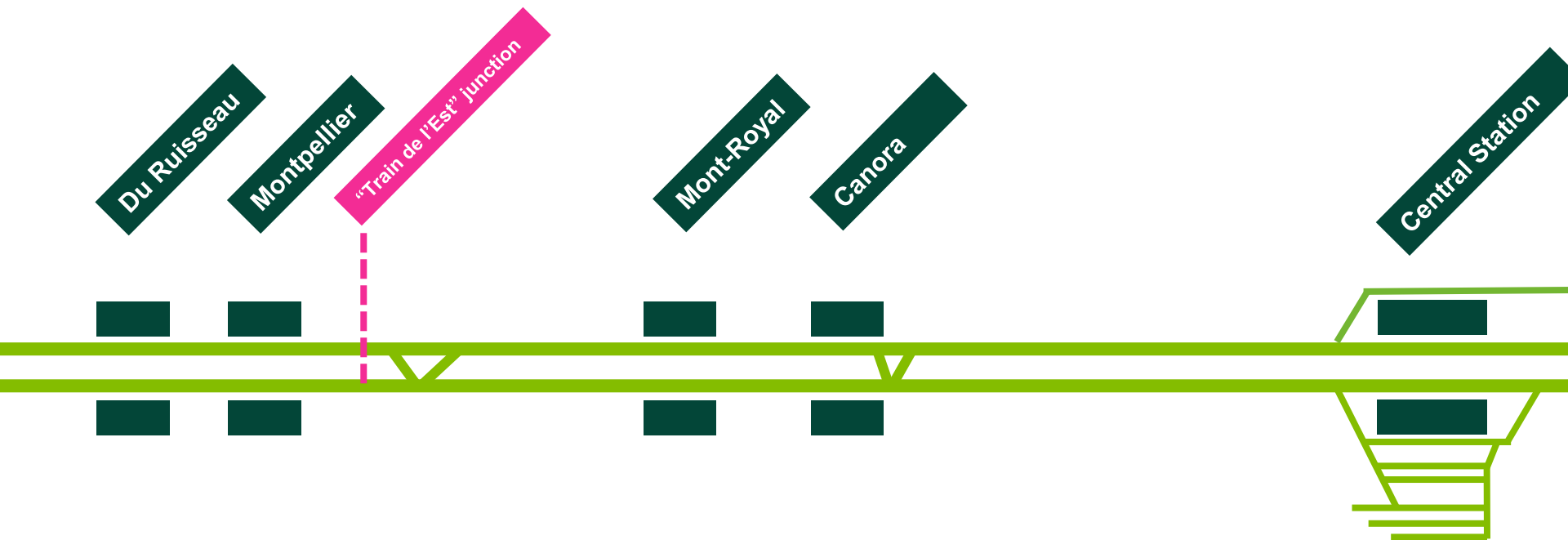
1. **June 16, 2018:** entrance facing the Marie-Victorin Pavilion closes
2. **July 2018:** public utilities on Vincent D'Indy are relocated
3. **End of July 2018:** preparatory work
4. **August 2018:** shaft excavation begins
5. **Fall 2019:** station construction (main shaft) and tunnel excavation
6. **Winter 2020:** station construction (platform and mezzanine)

3. DEUX-MONTAGNES LINE

April 2018

Work mainly done on weekends (Friday night to Monday morning)

Alternative service for some stations (Friday evening to Monday morning)

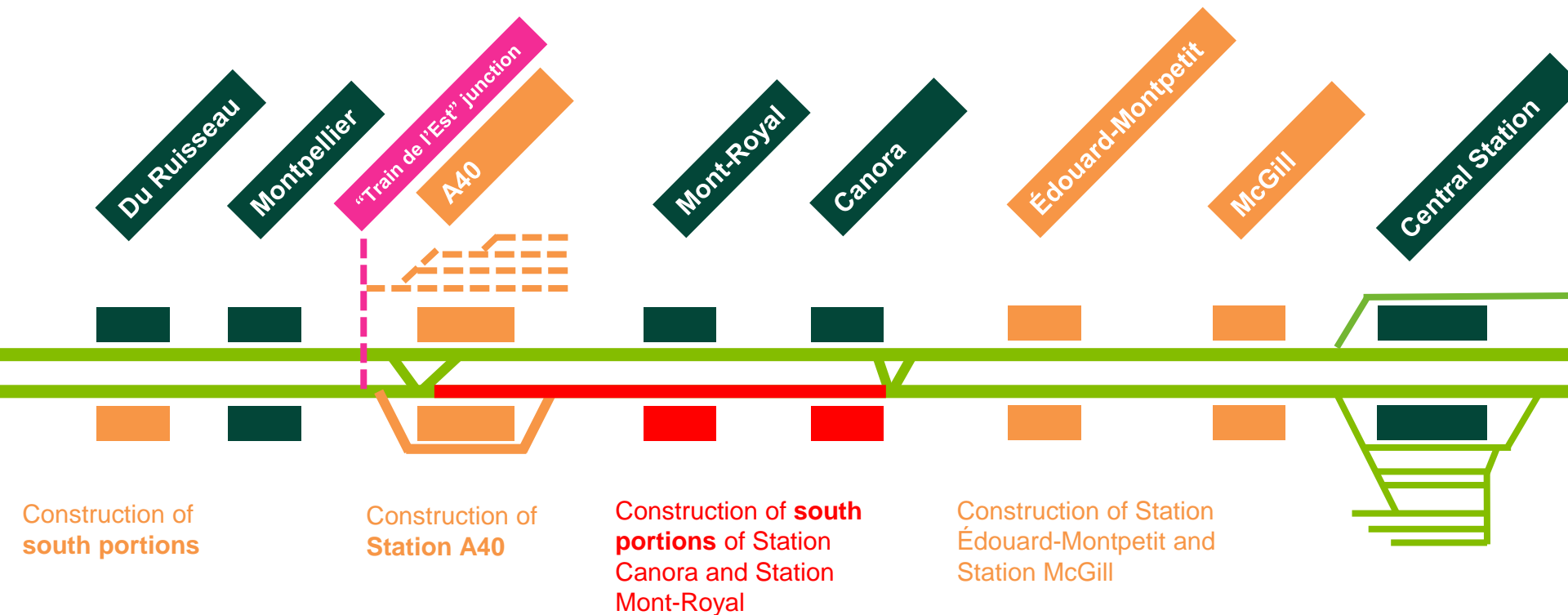


June 2018

Work during the week – south segment closed off

Changes to the Deux-Montagnes and Mascouche schedules

Deux-Montagnes: two departures in the morning and one departure in the evening removed (mostly from or to the stations on the Island of Montréal)



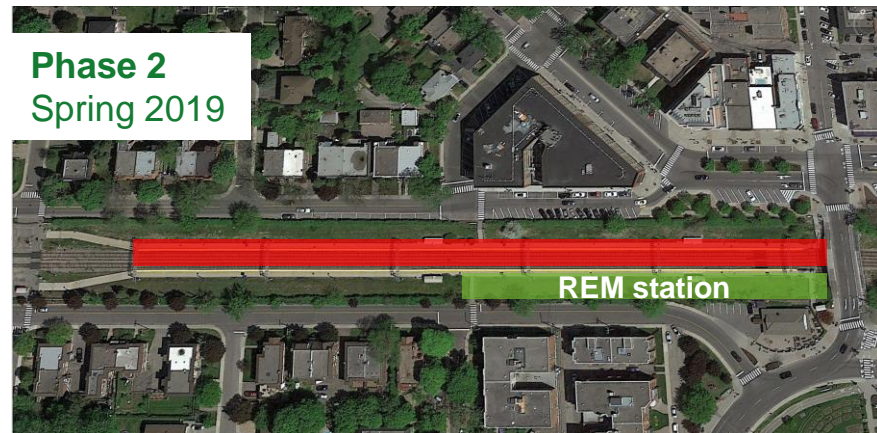
June 25, 2018

Work during the week – south segment closed off

Nature of the work

- Construction of the future Station Mont-Royal and Station Canora:
 - Construction of retaining walls
 - Demolition of existing platforms
 - Removal of rails on a portion of the segment
 - Hydraulic jacking
 - Construction of foundations
 - Erection of the structure on the south side of the stations

Station Mont-Royal



Station Canora



Example of station interior – railway is very close to the future station



PUBLIC TRANSIT MEASURES



Service measures (June to August 2018)

- Objectives:**
- Improve the capacity of the existing transport offer
 - Make customers aware of the importance of planning their trips

- Means:**
- Added departure from shuttle 400 to Montmorency station
 - Addition of a departure on each of the existing lines serving the stations
 - STM : 64 South, 117 South, 121 West, 171 West et 468 East lines
 - STL : 26, 76 and 402 lines

Pricing measures (June and July 2018)

- Objectives:**
- Inform customers of train service changes
 - Inform customers of other public transit options
 - Allow customers to try other public transit options

Trial OPUS (10 transit fares TRAM 8)	Roxboro-Pierrefonds – Canora June, 19 and 20, 8 a.m. to 9 a.m.	Central Station June, 19 and 20, 4 p.m. to 5 p.m.
Assistance at train station	Roxboro-Pierrefonds – Canora June, 25 to 29, 8 a.m. to 9 a.m. July 2 to 6, 8 a.m. to 9 a.m.	Central Station– Canora June, 25 to 29, 4 p.m. to 5 p.m. July, 2 to 6, 4 p.m. to 5 p.m.

