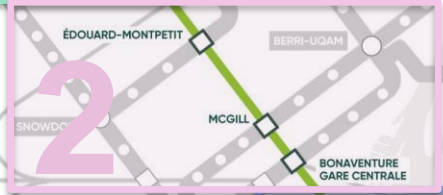
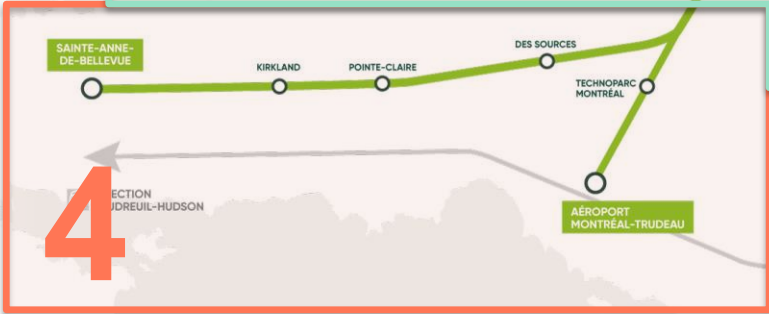


TECHNICAL BRIEFING WORK ON THE RÉSEAU EXPRESS MÉTROPOLITAIN

AUGUST 21, 2018



1. SOUTH SHORE



September

Temporary reconfiguration of Highway 10 (toward Sherbrooke)
Deviation to maintain two lanes in each direction



Fall

Start of temporary bus terminal construction

Maintaining existing access lanes for bus service



Fall

Start of temporary bus terminal construction

Maintaining existing access lanes for bus service



Fall

Start of temporary bus terminal construction
Maintaining existing access lanes for bus service

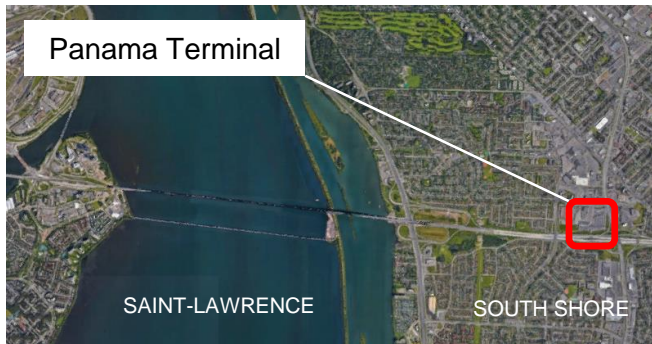


Fall

Start of temporary bus terminal construction

Discussions with land owners to make arrangements for temporary spaces

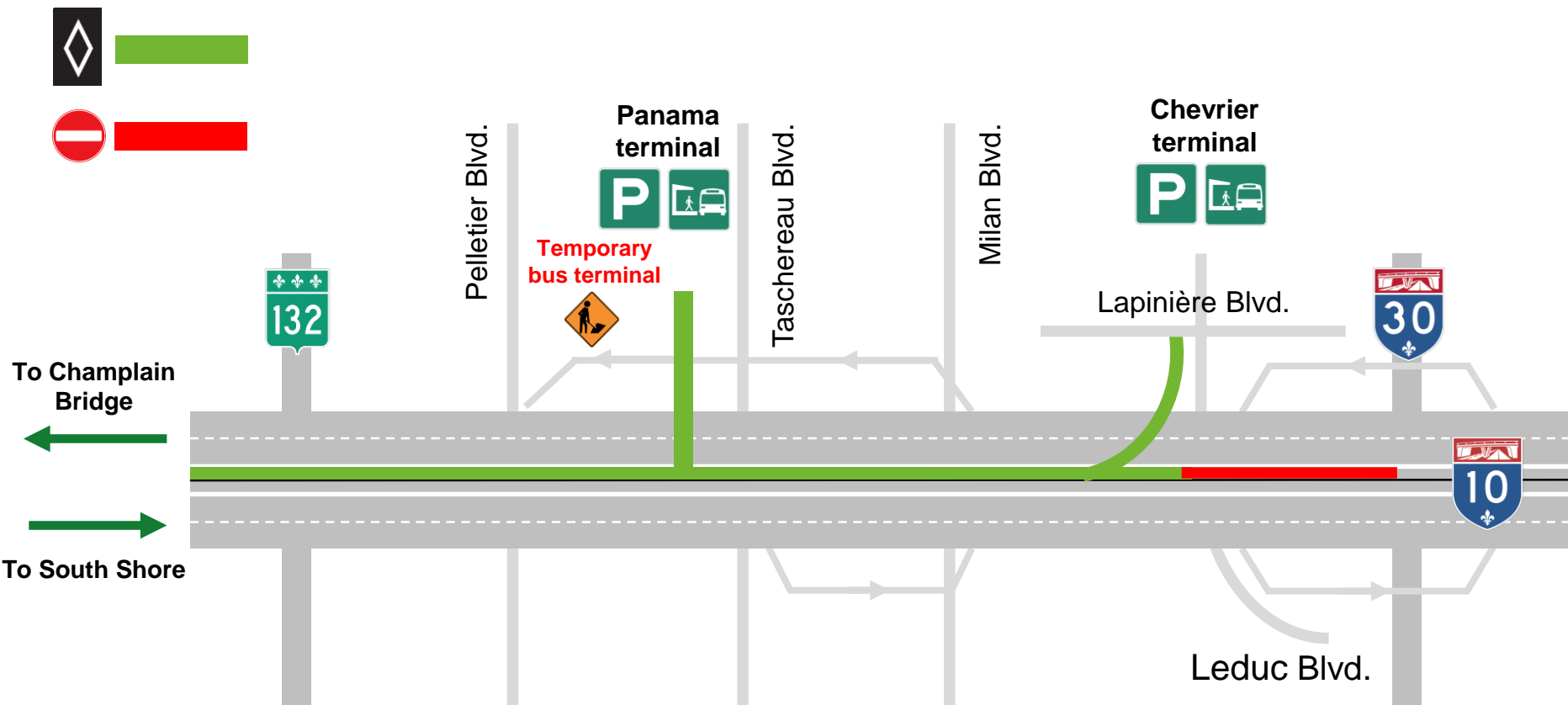
Panama Terminal



September

Maintenance of preferential bus accesses

Small stretch of reserved lane removed



Fall

Rehabilitation of Viaduc du Sud (raised access to Gare Centrale)
Streets closed in alternating sequence beneath the overpass
(coordination with the City of Montréal)



2. MCGILL AND ÉDOUARD-MONTPETIT

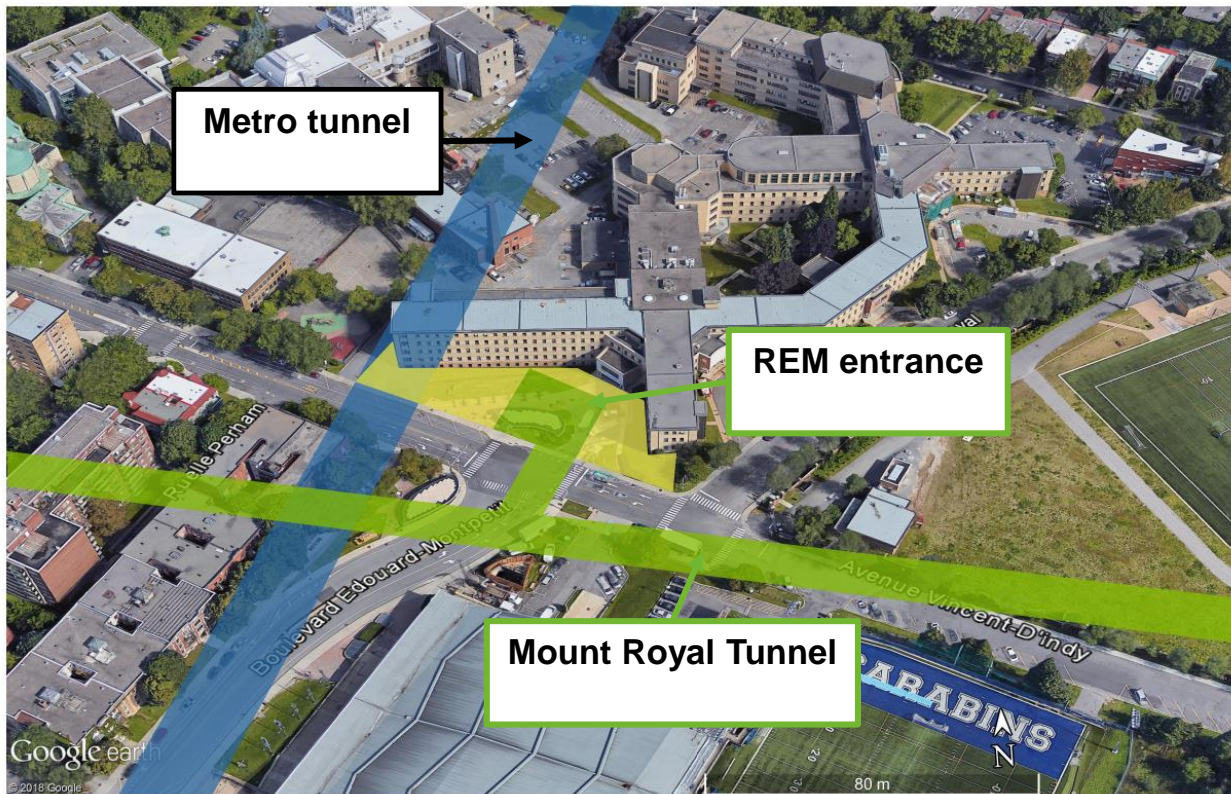
Fall

Next step: Demolition of the Marie-Victorin entrance shelter

Two accesses will be maintained to reach the Édouard-Montpetit station



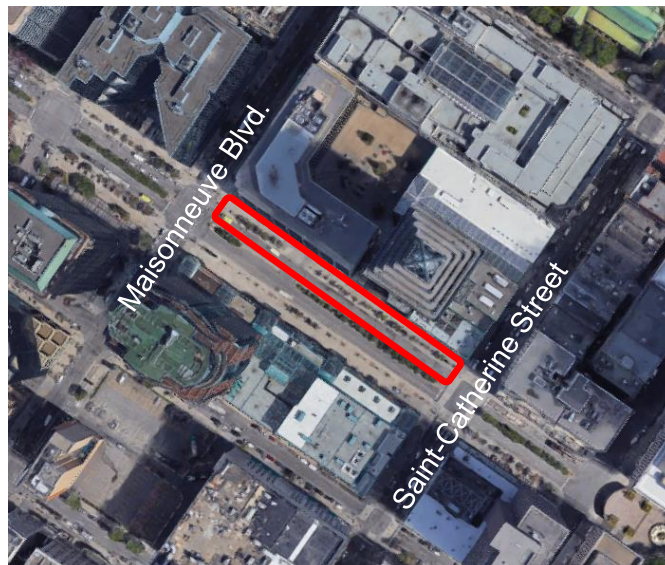
Correlation with the tunnel and metro





Fall

Re-location of public utilities – closure of McGill College (east side)
West side remains open with access to parking

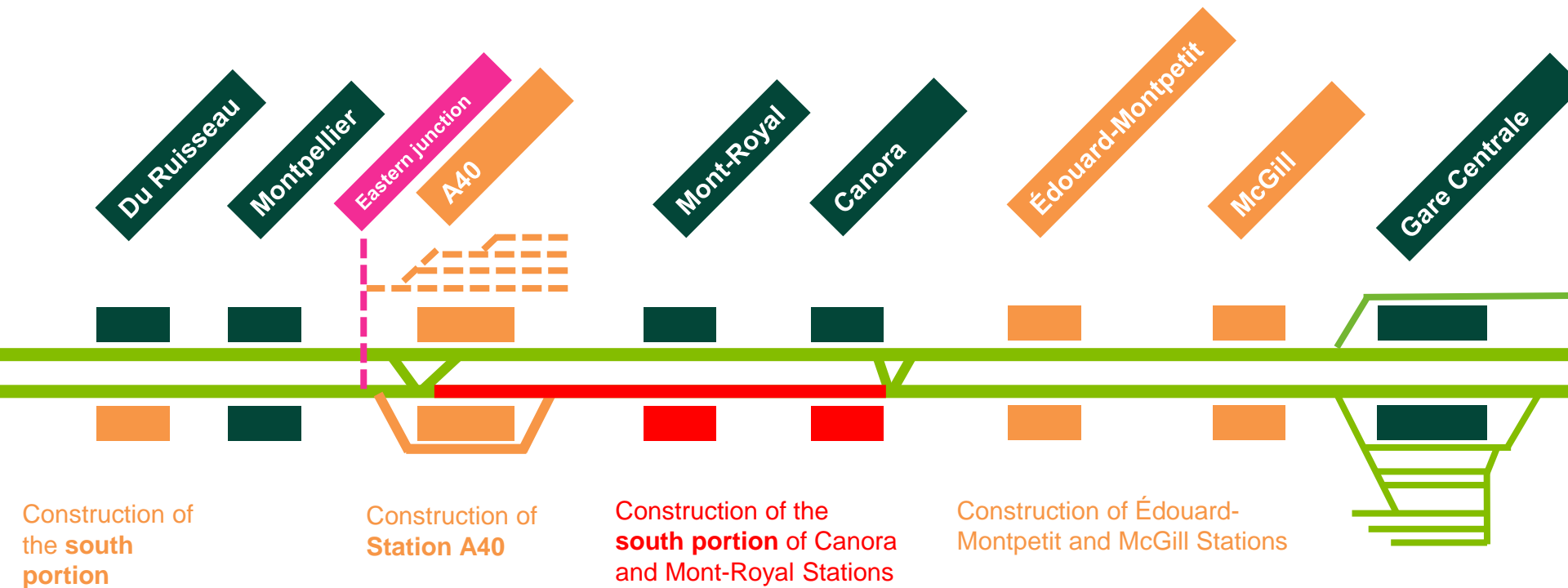


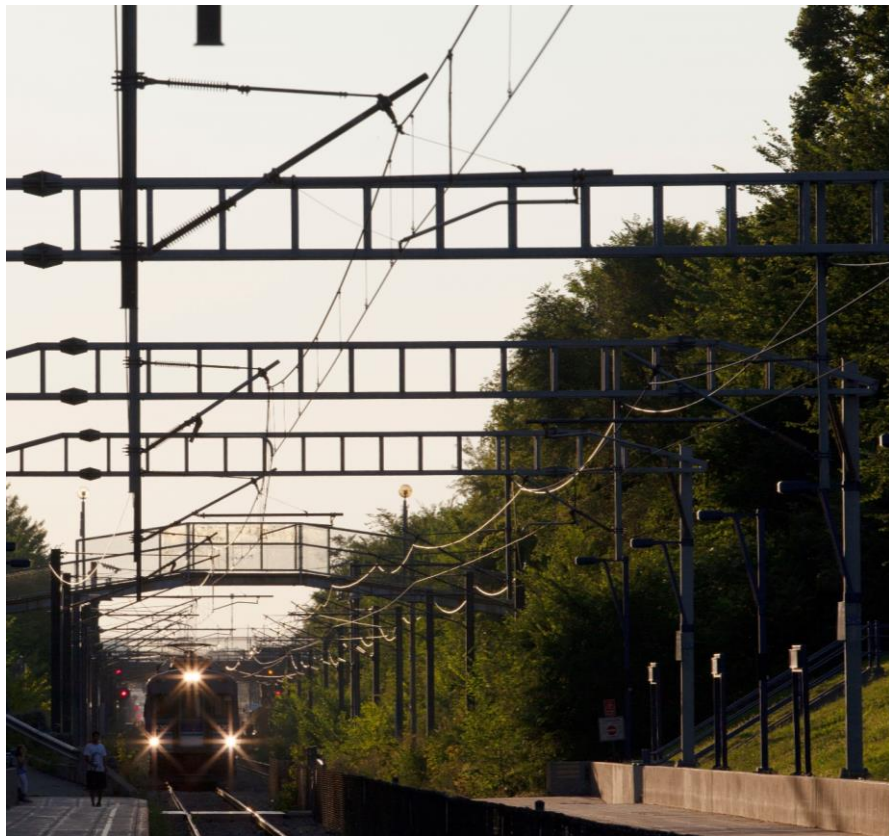
3. DEUX-MONTAGNES LINE



Since June 2018

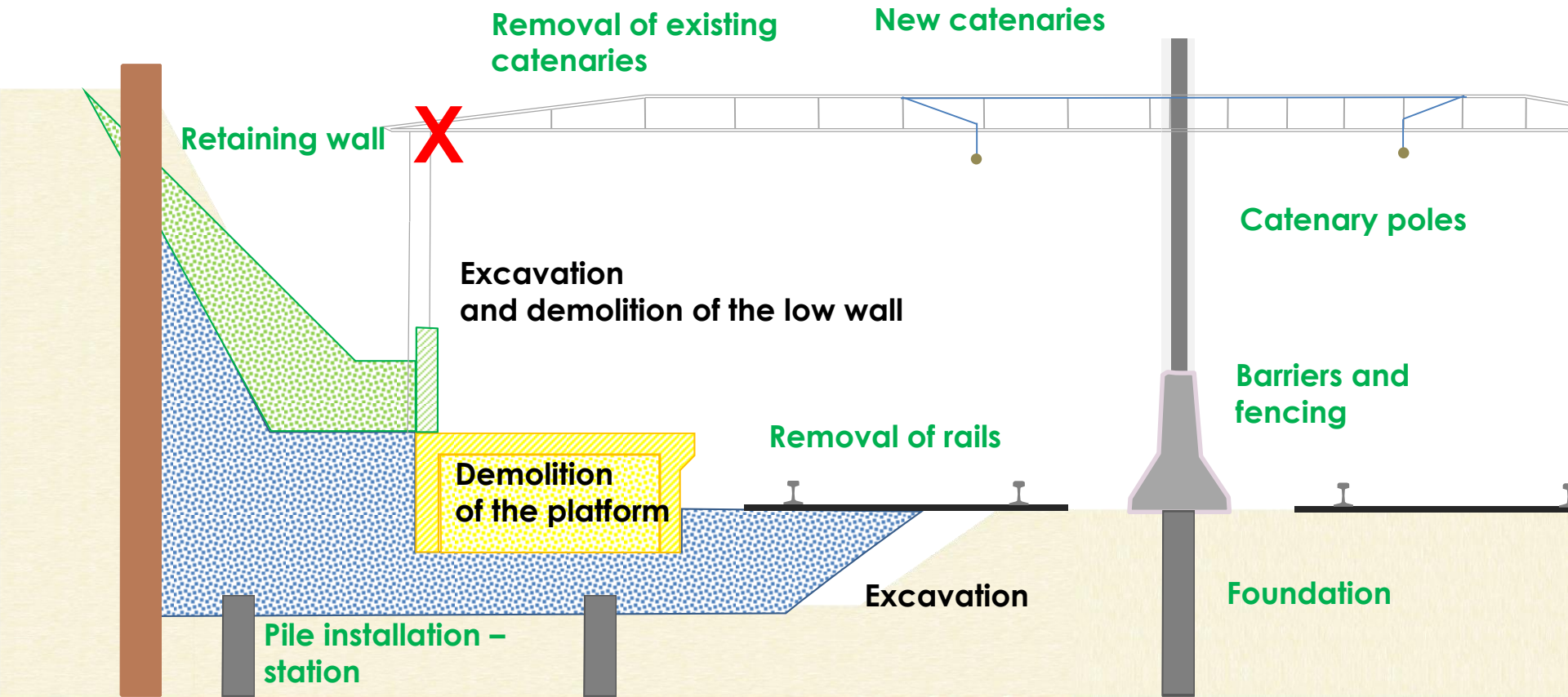
Work during the week – south segment closed off New Deux-Montagnes and Mascouche line schedules





Summer and fall

Transferring power supply and start of construction





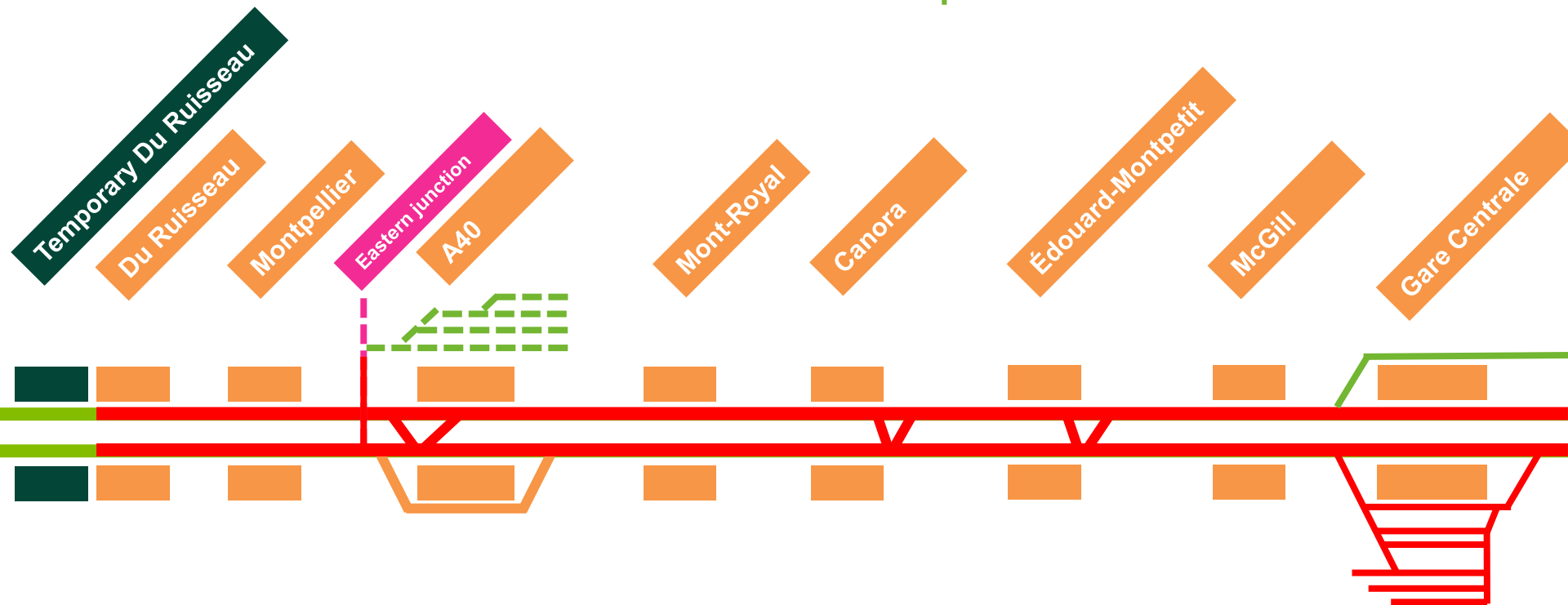
Artist's rendering of station interior – railway is very close to the future station



Early 2020

Intensive work – Du Ruisseau to Gare Centrale segment closed off

Alternative transit solutions to be implemented



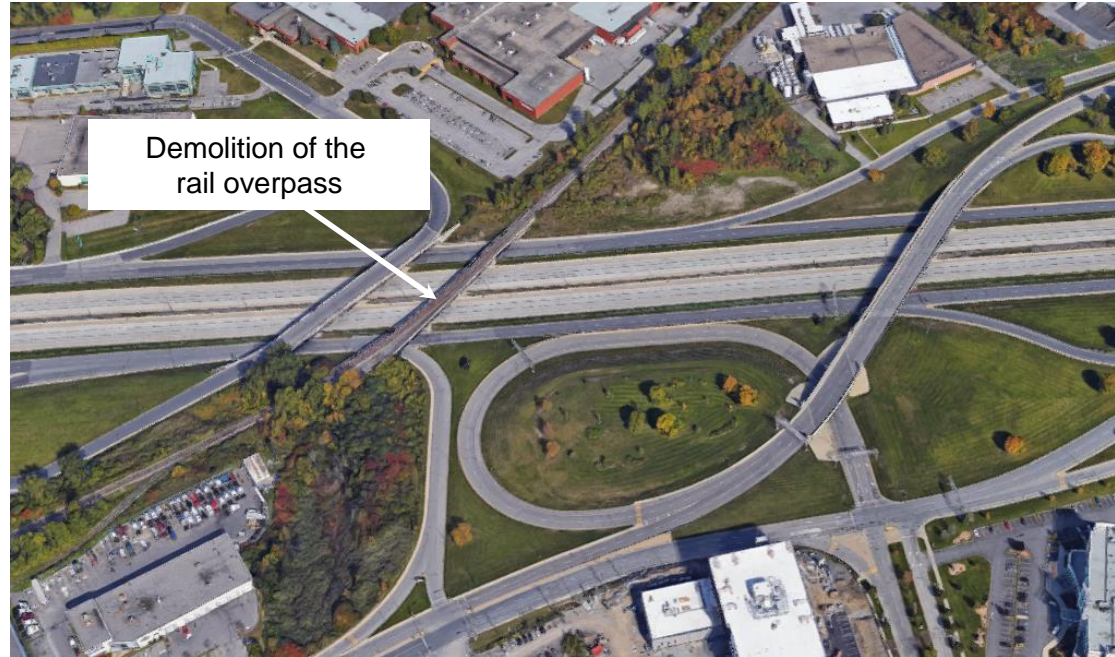
4. AIRPORT AND WEST ISLAND



Fall

Preparatory work – Demolition of Doney branch

Coordination of work at A40



MAINTAINING MOBILITY



Fall 2018

Three sectors to watch

Downtown Montréal

- Start of work on McGill College
- Work under the Viaduc du Sud (Gare Centrale access)

South Shore

- Deviation of A10 toward Sherbrooke
- Work on Panama bus terminal (reduced park-and-ride lot capacity)

Deux-Montagnes Line

- Construction work continues – Mont-Royal and Canora sectors

Fall 2018

Deux-Montagnes Line

1) Adjust (when possible) commuting routines

Certain departures have residual capacity

> **Field communication campaign**

Alternatives that don't add transit time

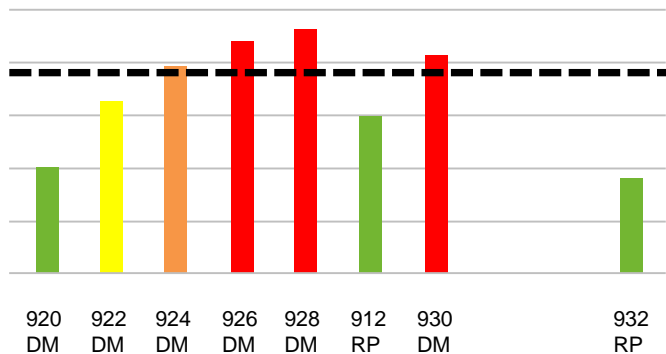
Simple modification to travel schedules

Users who usually board trains at the Canora and Mont-Royal stations are invited to use the Mascouche line trains when travelling toward downtown Montréal

AM		PM
Mont-Royal Station	Canora Station	Gare Centrale
Train 1200 at 6:30 a.m.	Train 1200 at 6:32 a.m.	Train 1205 at 3:58 p.m.
Train 1202 at 7:13 a.m.	Train 1202 at 7:15 a.m.	Train 1207 at 4:43 p.m.
Train 1204 at 7:48 a.m.	Train 1204 at 7:51 a.m.	Train 1209 at 5:16 p.m.
Train 1206 at 8:25 a.m.	Train 1206 at 8:27 a.m.	

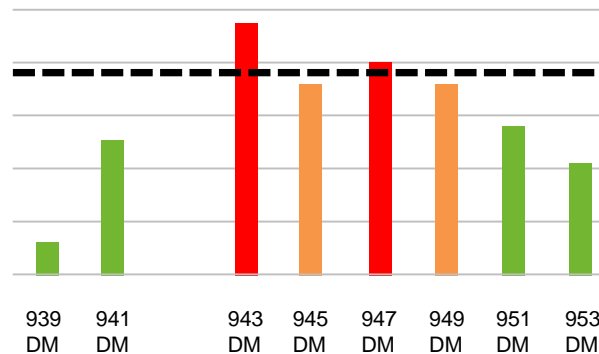
**AM Peak period – Projection of maximum
load on-board in September 2018**

**Max.
capacity
observed**



**In the morning, risk of overflow
starting at Du Ruisseau**

**PM Peak period – Projection of maximum
load on-board in September 2018**



**In the evening, increased risk of
overflow at Gare Centrale**

Fall 2018

Deux-Montagnes Line

2) Direct a portion of clients toward alternatives

Begin migrating clients toward public transit alternatives in preparation for 2020

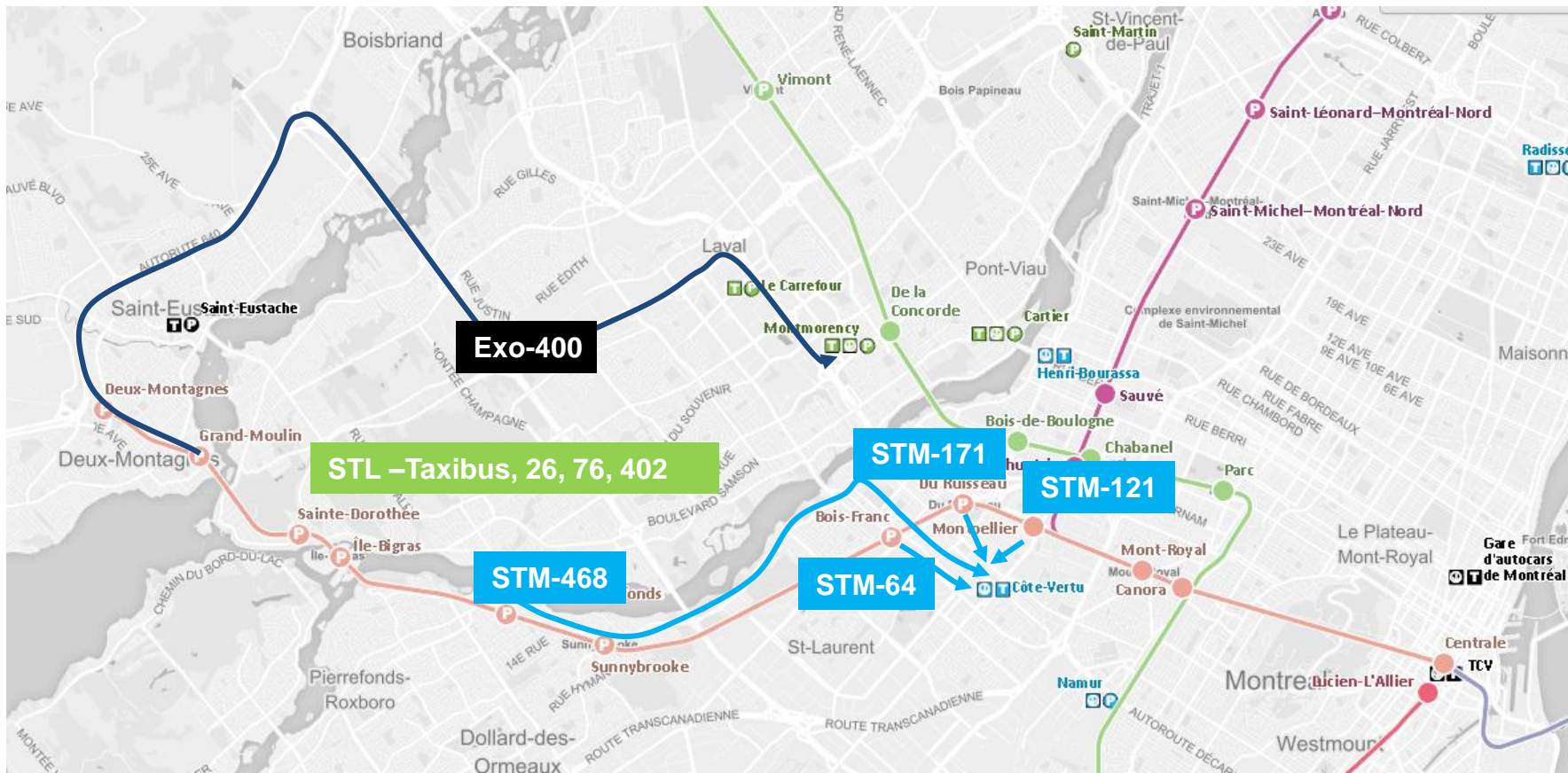
Trial TRAM

Assist those who hold TRAIN passes with changing their habits, wherever possible

On August 22 and 28, for the second time this summer, we will be handing out 10-trip *Trial TRAM* passes in the Deux-Montagnes stations.

Yearly and monthly TRAIN pass holders for the Deux-Montagnes line will be able to use these passes beginning on August 22.

Objectives: To help users as they transition to a new commuting routine, enabling them to determine the public transit services that best suit their needs.



Five targeted stations*:

- > Bois-Franc Station
Bus 64 + Côte-Vertu metro
- > Du Ruisseau Station
Bus 171 + Côte-Vertu metro
- > Montpellier Station
Bus 121 + Côte-Vertu metro
- > Mont-Royal and Canora Stations
Mascouche Line



Chrono

* other bus routes being discussed with STM



CHOISISSEZ UN MODE DE TRANSPORT ALTERNATIF

Voici toutes les options à votre disposition à chacune des gares de la ligne

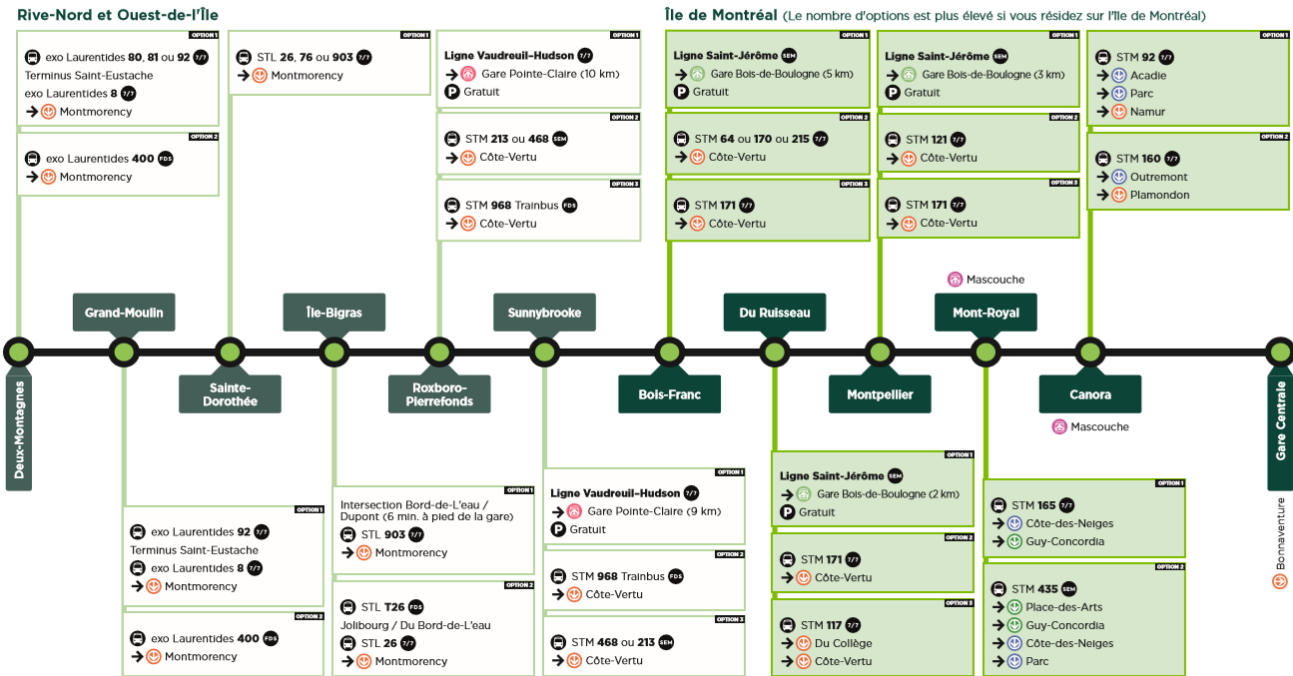
Ligne Deux-Montagnes
Rentrée 2018

TRAIN BONDÉ?



DES
OPTIONS
S'OFFRENT
À VOUS

À CONSERVER



Demeurez informés en tout temps avec Chrono

Si ce n'est pas déjà fait, téléchargez l'application Chrono afin de bénéficier de toute l'information dont vous avez besoin pour vous déplacer en train, en autobus ou en métro. Chrono vous donne les horaires de tous ces modes de transport partout, en tout temps et même hors connexion.



service 7 jours sur 7



service sur semaine seulement



service le fin de semaine seulement



autobus



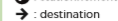
train



métro



stationnement



destination

(km) : distance entre les gares

Fare mitigation measure – Deux-Montagnes line

Through the end of 2019, a fare mitigation measure is offered to Deux-Montagnes line customers who experience downgraded services as a result of Réseau express métropolitain construction work.

A fare mitigation measure of up to 30% for yearly and monthly TRAM and TRAIN passes for users who reside in the Deux-Montagnes line sector.

	No action required from the user	Web form or ticketing system	Ticketing system only
Included	Regular subscription	Regular monthly subscription	Student and discounted monthly subscriptions

- This measure does not apply to occasional passes, such as 1-trip tickets.
- This measure does not apply to new annual subscriptions.

NEXT STEPS



Solutions for the Deux-Montagnes and Mascouche lines

Communication campaign

BACK-TO-SCHOOL 2018

Alternative transit proposals

Objective: To encourage users to change their habits (new schedule / new routes).

Solutions for the Deux-Montagnes and Mascouche lines

Brainstorming forum with mobility partners

FALL 2018

Focus groups to find solutions

Objective: To identify additional solutions for public transit alternatives