

# TECHNICAL BRIEFING WORK ON THE RÉSEAU EXPRESS MÉTROPOLITAIN

APRIL 25, 2018

## Project progress

- Contract signed with the winning consortia on April 12, 2018
- **Project office** set up for the REM
- NouvLR is at the intensive planning stage
  - Design-build
- Preparatory work has been carried out in the field since March 2018
- Summer 2018: work will actively start on **all branches**

## Québec's largest public transit project in the last 50 years

- **A linear project** – a 67-km route almost as long as the Montréal metro
- **Many different trades** – nearly 34,000 jobs during the construction
- **Coordination with 11 municipalities, 8 boroughs and 5 public transit organizations** – project office with more than 1 000 experts



## A project involving several partners

### Project Realization



- Infrastructure engineering, procurement and construction



GROUPE  
**PMM**

- Rolling stock, systems and operation and maintenance services

### Project Integration

Mobilité Montréal  
committees

Work impact  
management  
committees

Coordination  
committees  
– government  
departments,  
municipalities and  
partners

Coordination  
committees –  
ARTM and  
transit authorities

**More than 20** work planning and monitoring committees

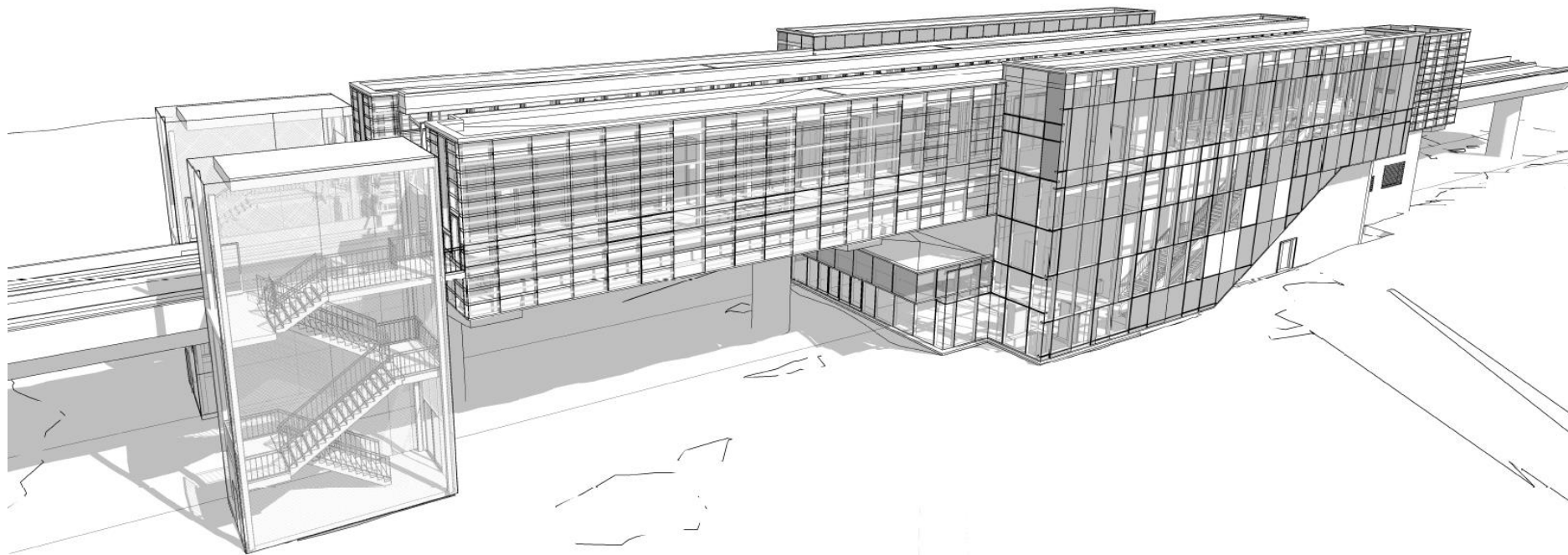
## Overview of the work

- Implementation of a new technology: automated electric light rail on fully dedicated lines (dedicated corridor)
  - Construction of Rive-Sud, airport and Sainte-Anne-de-Bellevue branches
  - Conversion of the route to accommodate a light rail on the Deux-Montagnes line
    - Crossings closed
  - Modernization of the Mont-Royal Tunnel
  - Construction of three connections to the metro (McGill, Édouard-Montpetit and Bonaventure) and an intermodal station (Correspondance A40)
- Construction of 26 REM stations
  - Enclosed and weatherproof station buildings, and designed for universal access

## Ground-level station

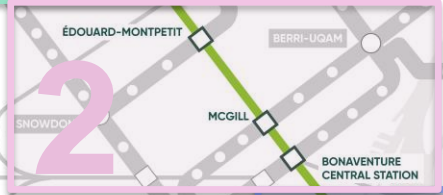
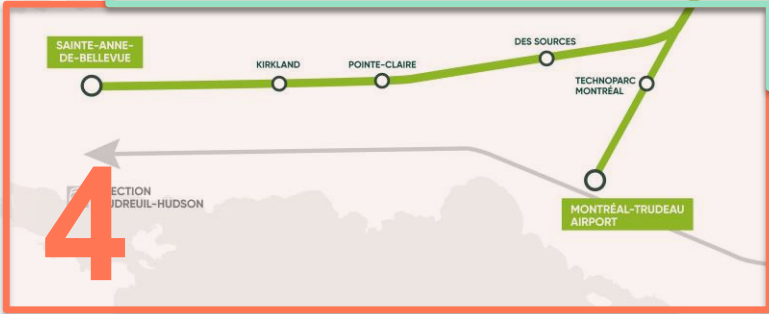
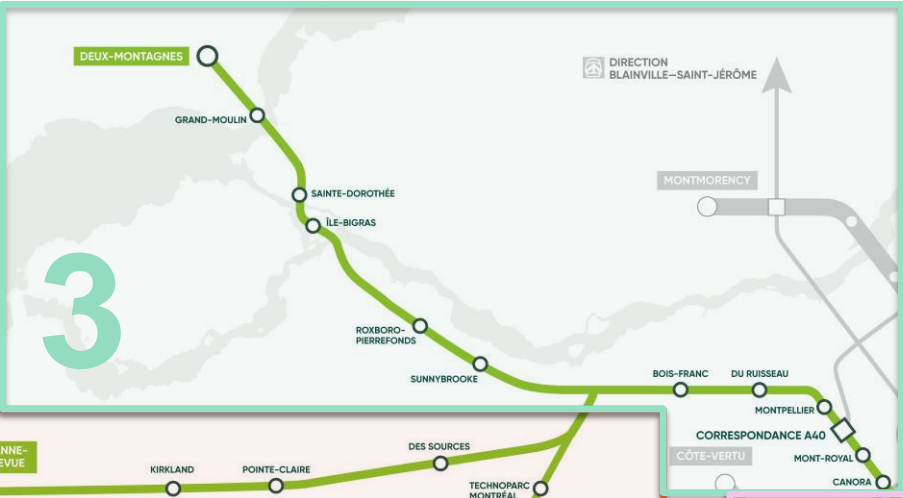


## Elevated station









# 1. SOUTH SHORE

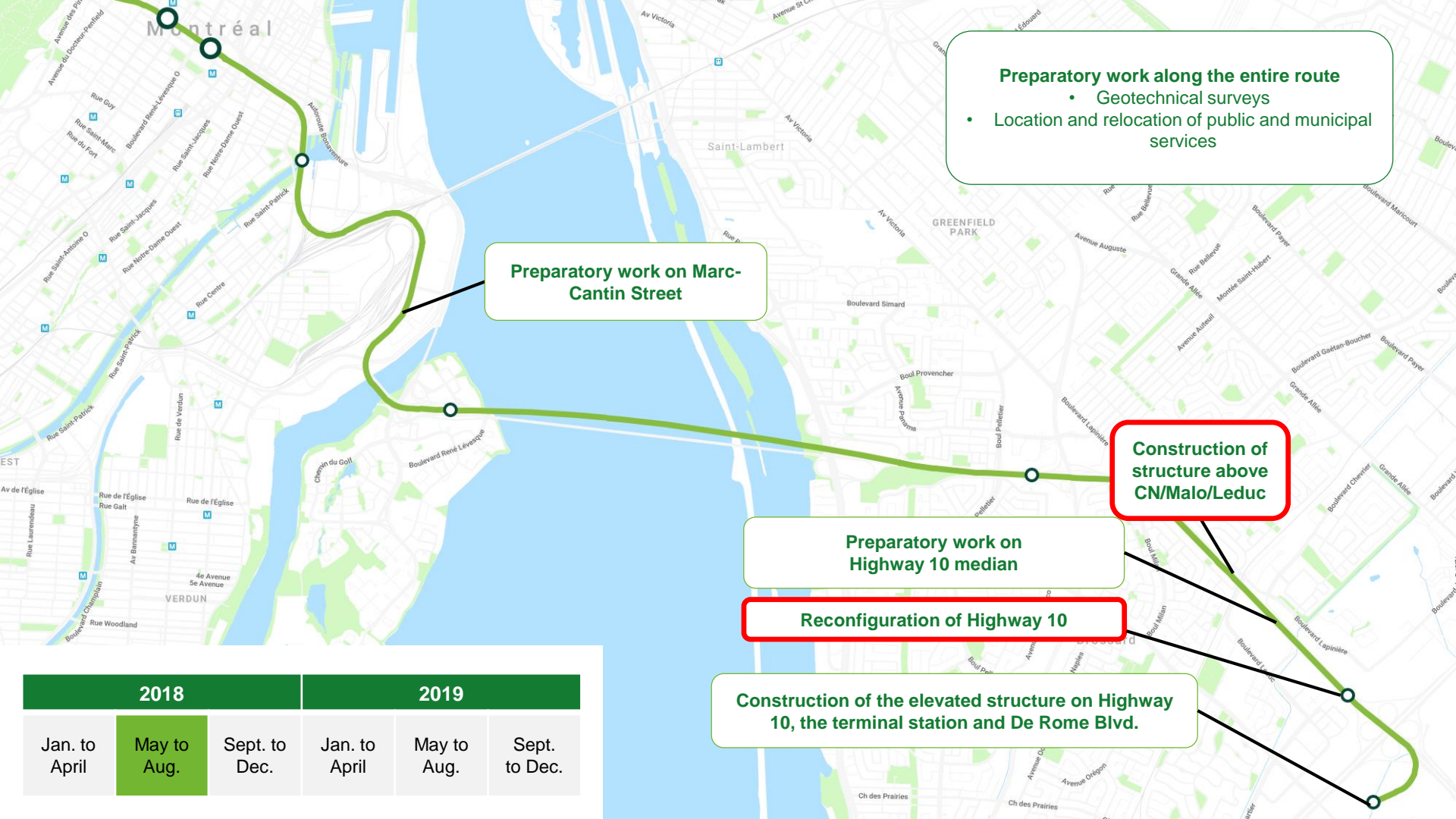


## Legend

**Work in progress in the indicated period**

Work continuing in the indicated period

**Work with significant impacts**



**Preparatory work along the entire route**

- Geotechnical surveys
- Location and relocation of public and municipal services

**Preparatory work on Marc-Cantin Street**

**Construction of structure above CN/Malo/Leduc**

**Preparatory work on Highway 10 median**

**Reconfiguration of Highway 10**

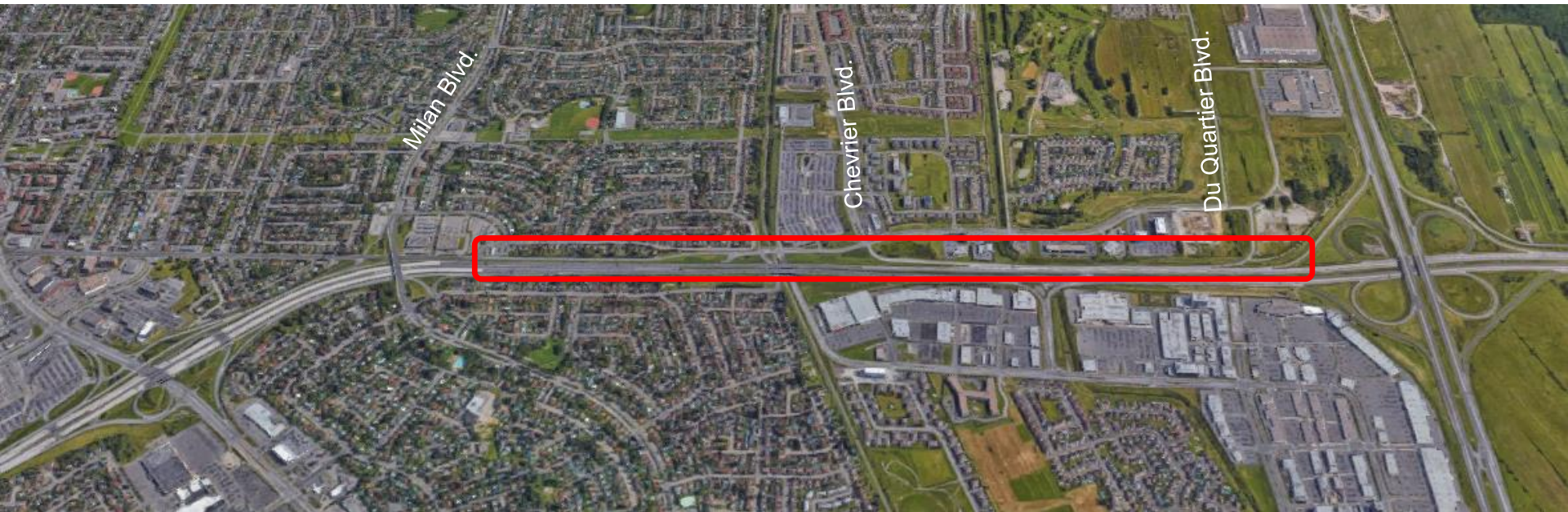
**Construction of the elevated structure on Highway 10, the terminal station and De Rome Blvd.**

2018			2019		
Jan. to April	May to Aug.	Sept. to Dec.	Jan. to April	May to Aug.	Sept. to Dec.

Summer 2018

## Reconfiguration of Highway 10

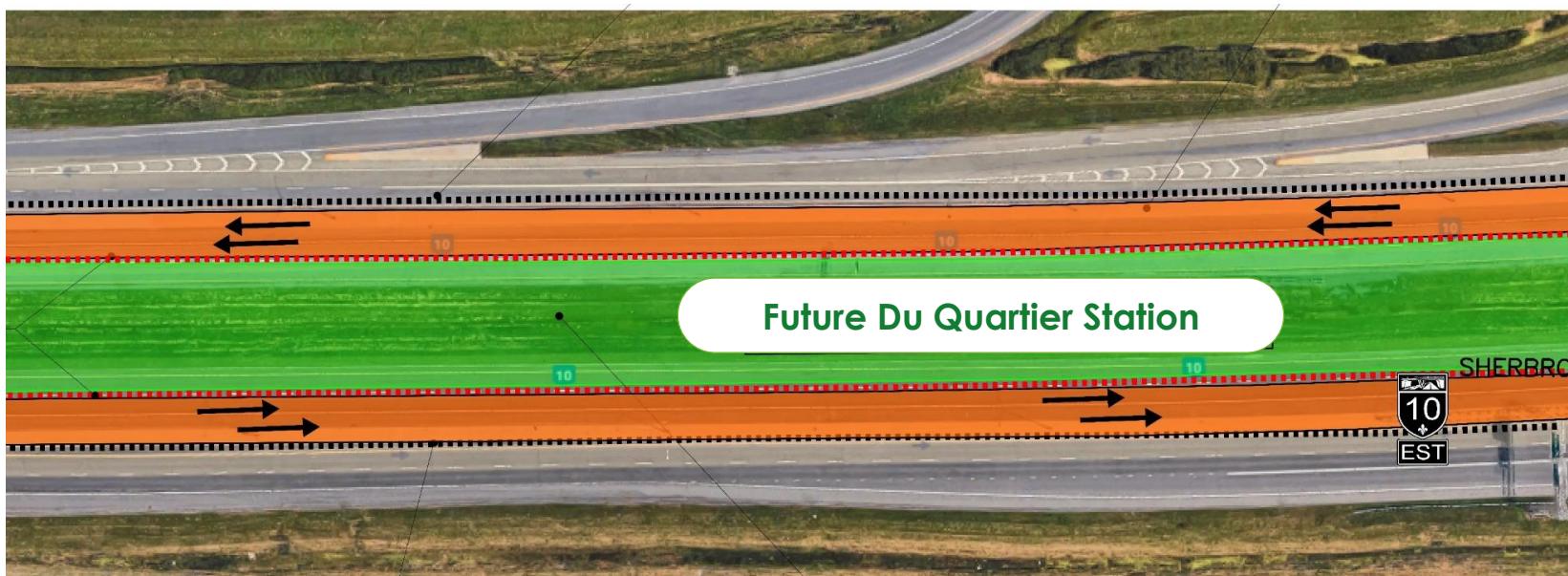
Target area



Summer 2018

Reconfiguration of Highway 10

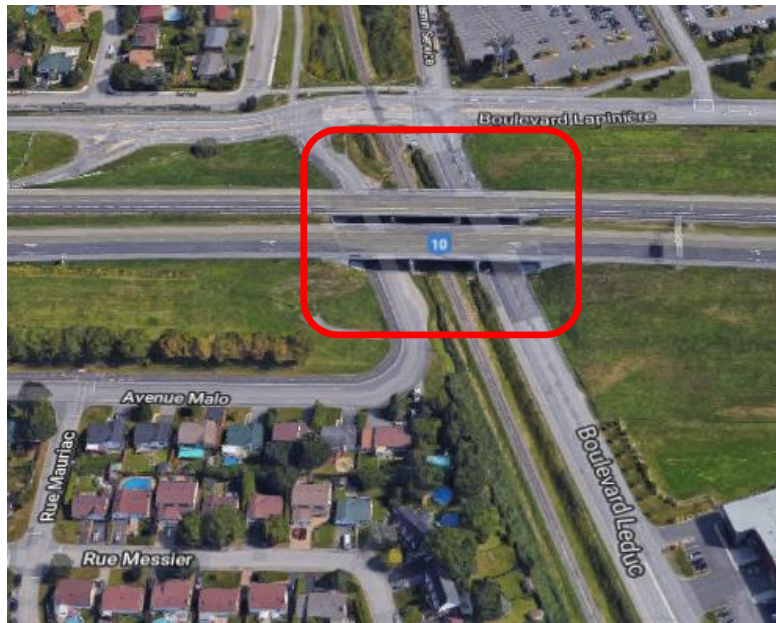
Maintaining two lanes in each direction



Summer 2018

CN/Malo/Leduc construction

Target area

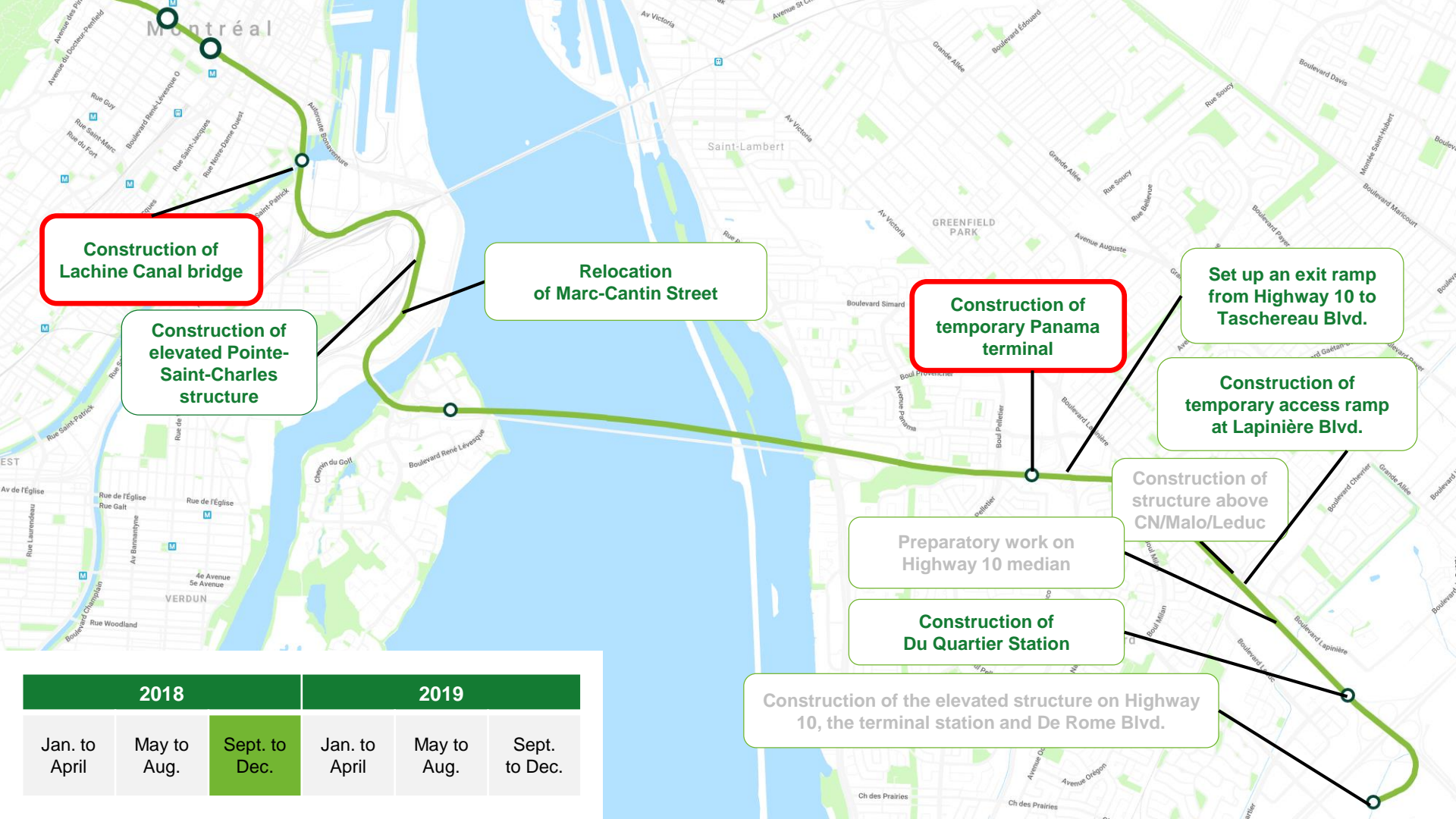


Summer 2018

## Construction of a structure above the CN track (Malo/Leduc) Coordination with Ville de Brossard







**Construction of Lachine Canal bridge**

**Construction of elevated Pointe-Saint-Charles structure**

**Relocation of Marc-Cantin Street**

**Construction of temporary Panama terminal**

**Set up an exit ramp from Highway 10 to Taschereau Blvd.**

**Construction of temporary access ramp at Lapinière Blvd.**

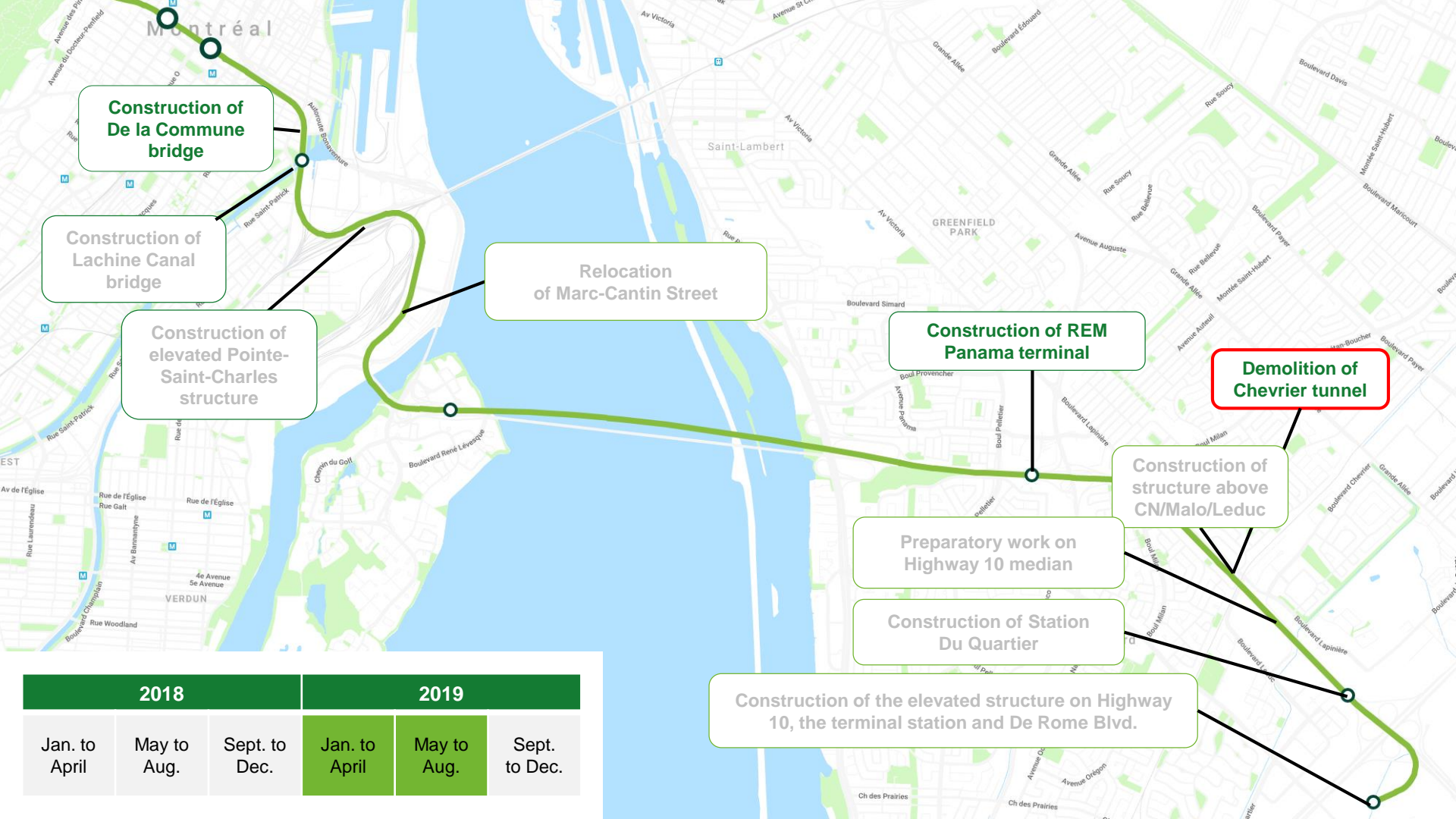
**Preparatory work on Highway 10 median**

**Construction of structure above CN/Malo/Leduc**

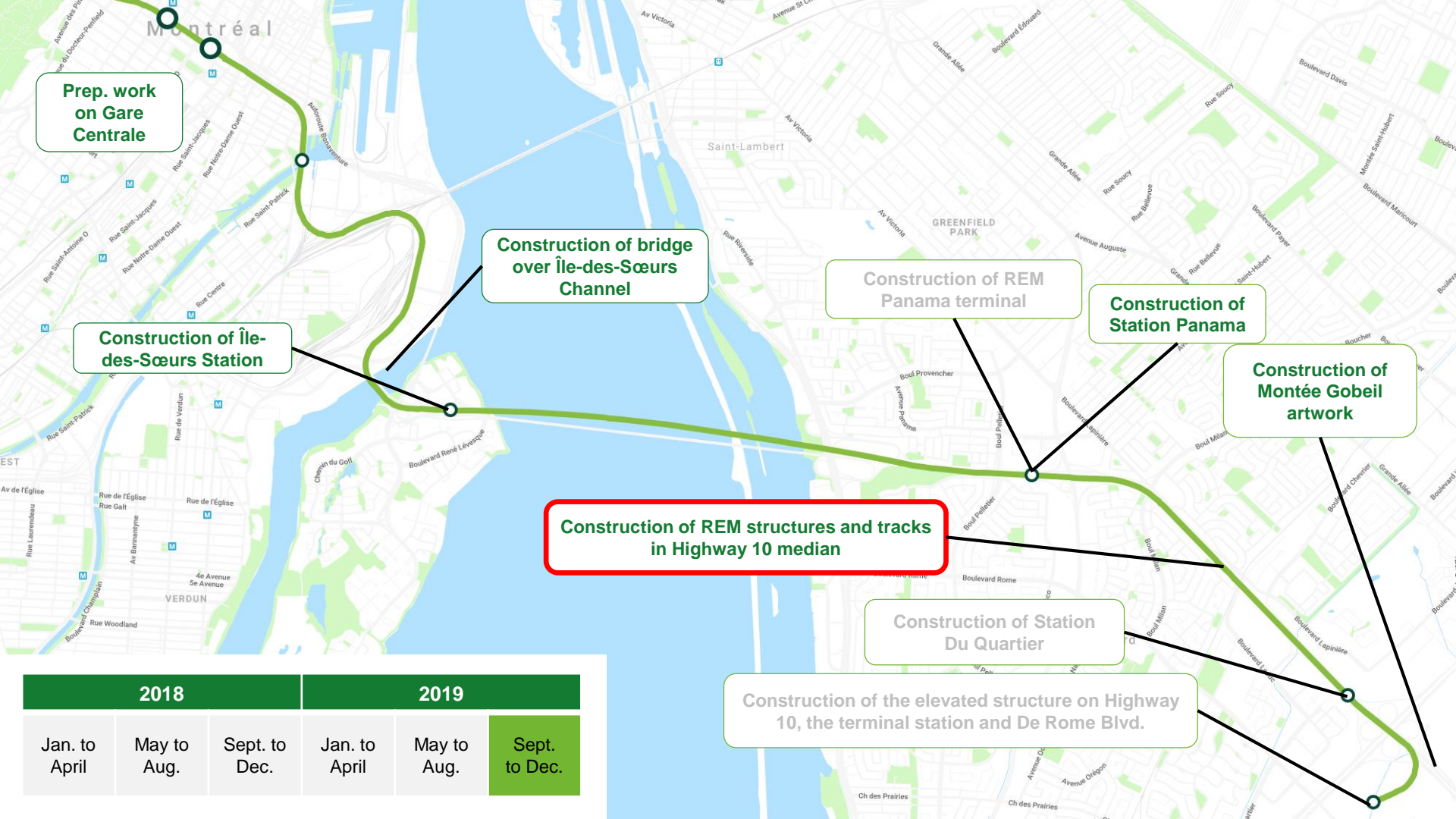
**Construction of Du Quartier Station**

**Construction of the elevated structure on Highway 10, the terminal station and De Rome Blvd.**

2018			2019		
Jan. to April	May to Aug.	Sept. to Dec.	Jan. to April	May to Aug.	Sept. to Dec.



2018			2019		
Jan. to April	May to Aug.	Sept. to Dec.	Jan. to April	May to Aug.	Sept. to Dec.



**Prep. work on Gare Centrale**

**Construction of Île-des-Sœurs Station**

**Construction of bridge over Île-des-Sœurs Channel**

**Construction of REM structures and tracks in Highway 10 median**

**Construction of REM Panama terminal**

**Construction of Station Panama**

**Construction of Montée Gobeil artwork**

**Construction of Station Du Quartier**

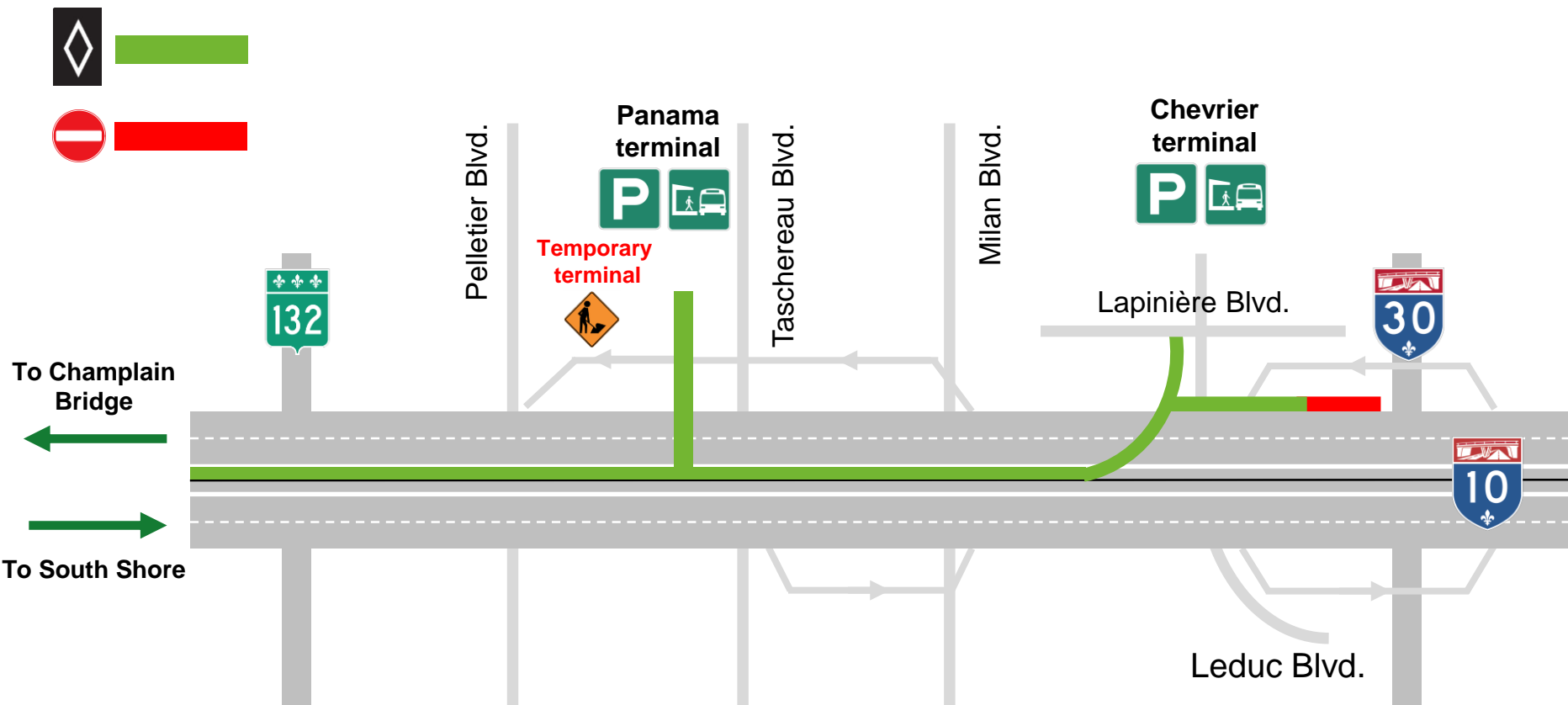
**Construction of the elevated structure on Highway 10, the terminal station and De Rome Blvd.**

2018			2019		
Jan. to April	May to Aug.	Sept. to Dec.	Jan. to April	May to Aug.	Sept. to Dec.

Summer 2018

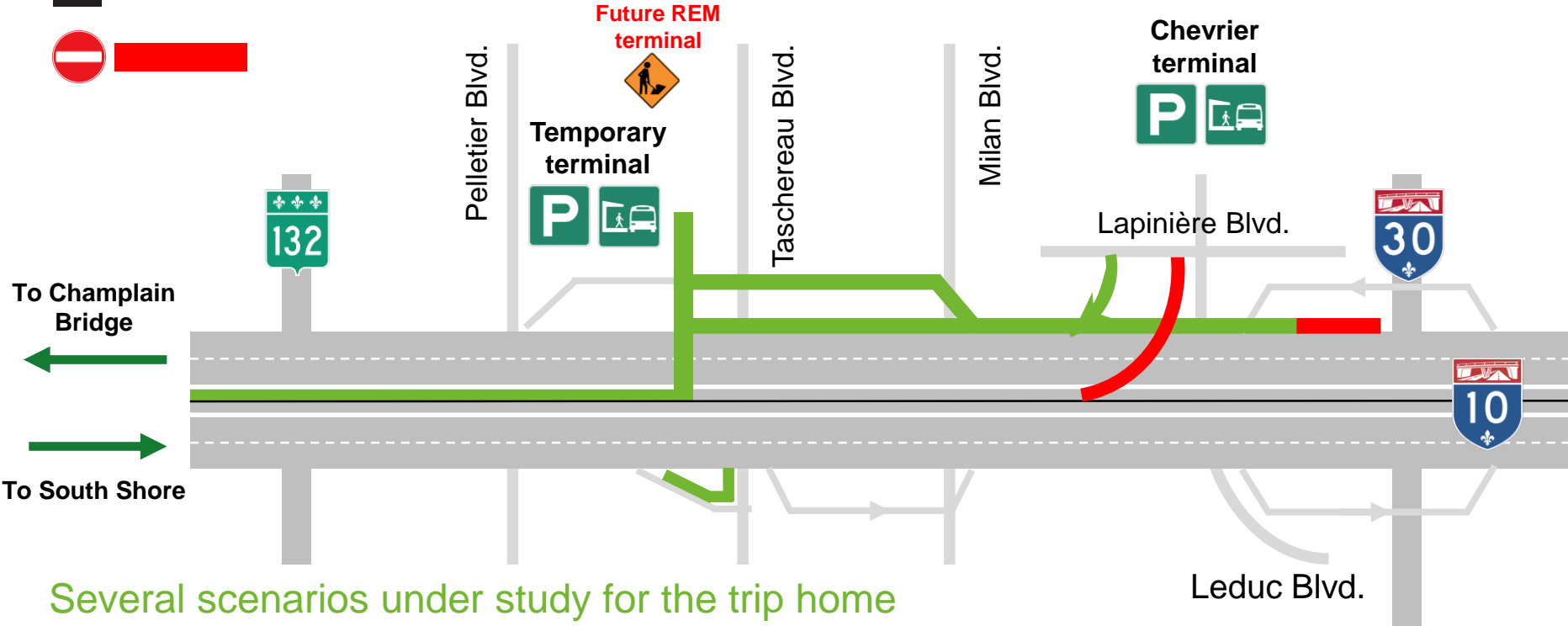
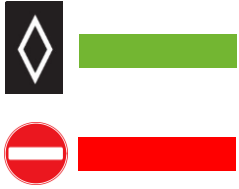
# Maintenance of preferential bus accesses

Small stretch of reserved lane removed



2019

# New access ramp for Chevrier terminal Chevrier tunnel closure

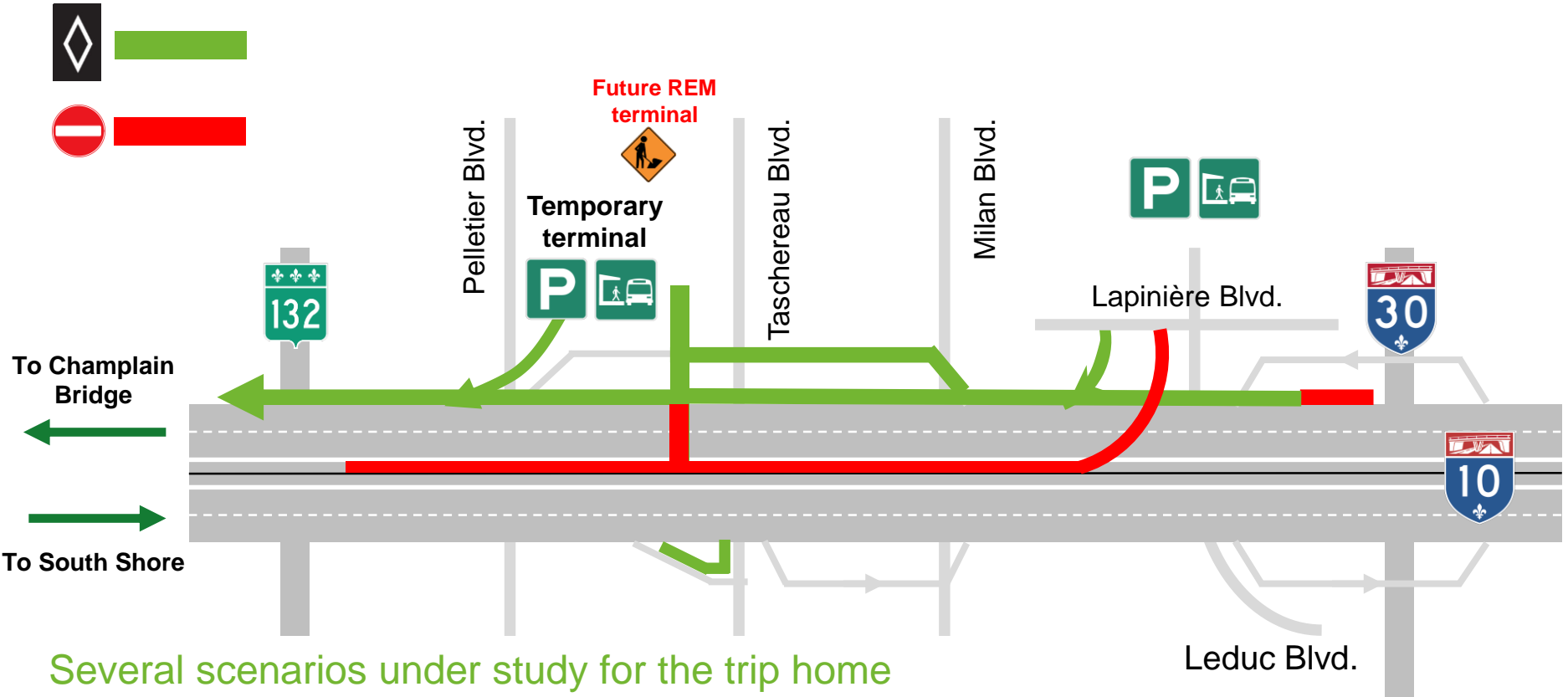


Several scenarios under study for the trip home

2019

# New access ramps for the Chevrier and Panama terminals

Highway 10 middle lane closed off for the work

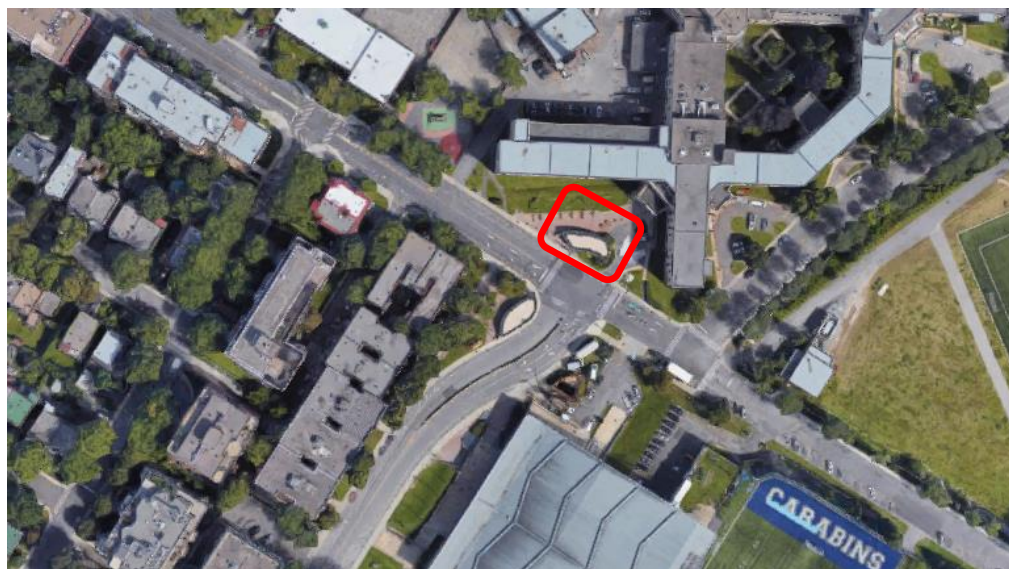


Several scenarios under study for the trip home

# 2. MCGILL AND ÉDOUARD-MONTPETIT

Summer 2018

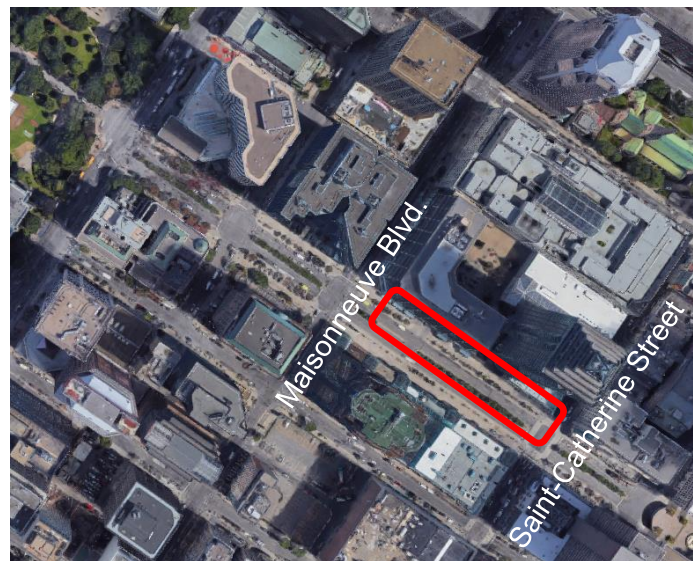
Excavation and construction of future REM entrance structure  
Coordination with Ville de Montréal and Université de Montréal





Fall 2018

## Construction of future connection – obstruction on McGill College Coordination with Ville de Montréal and the STM



# 3. DEUX-MONTAGNES LINE



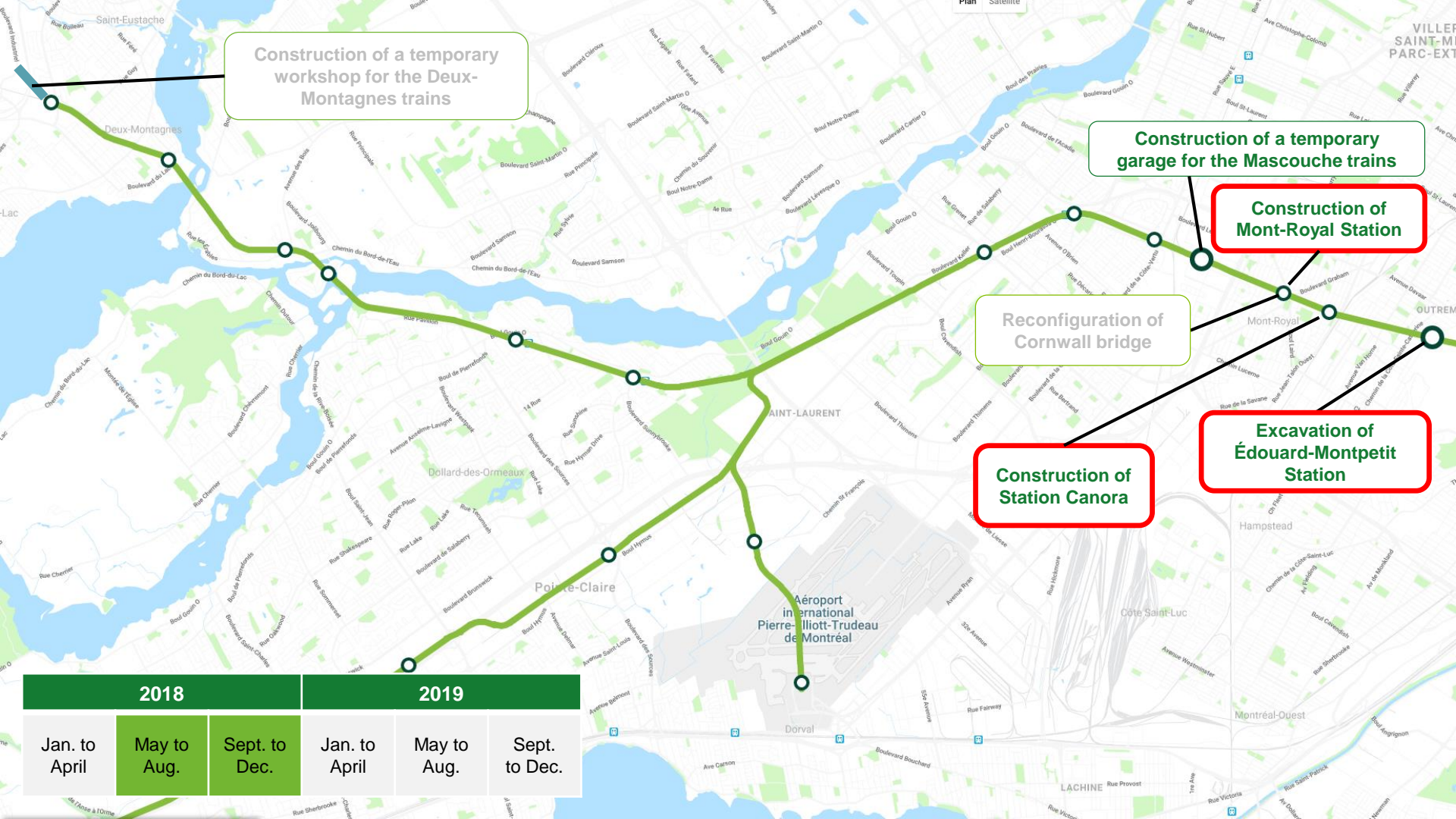
**Construction of a temporary workshop for the Deux-Montagnes trains**

**Reconfiguration of Cornwall bridge**

**Preparatory work along the entire route:**

- Geotechnical surveys
- Location and relocation of public and municipal services

2018		2019			
Jan. to April	May to Aug.	Sept. to Dec.	Jan. to April	May to Aug.	Sept. to Dec.



Construction of a temporary workshop for the Deux-Montagnes trains

Construction of a temporary garage for the Mascouche trains

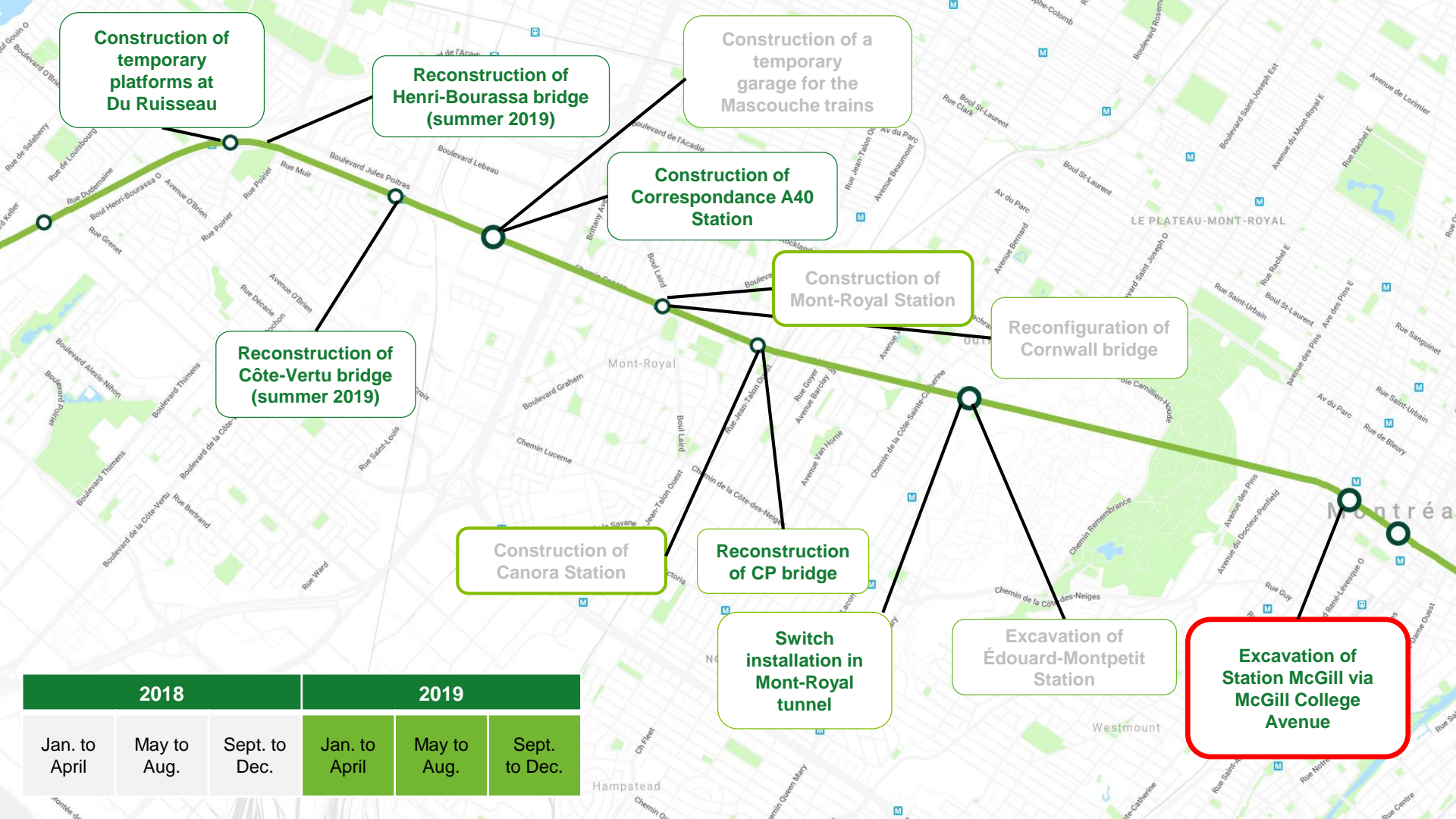
Construction of Mont-Royal Station

Reconfiguration of Cornwall bridge

Construction of Station Canora

Excavation of Édouard-Montpetit Station

2018			2019		
Jan. to April	May to Aug.	Sept. to Dec.	Jan. to April	May to Aug.	Sept. to Dec.



**Construction of temporary platforms at Du Ruisseau**

**Reconstruction of Henri-Bourassa bridge (summer 2019)**

**Construction of a temporary garage for the Mascouche trains**

**Construction of Correspondance A40 Station**

**Construction of Mont-Royal Station**

**Reconfiguration of Cornwall bridge**

**Reconstruction of Côte-Vertu bridge (summer 2019)**

**Construction of Canora Station**

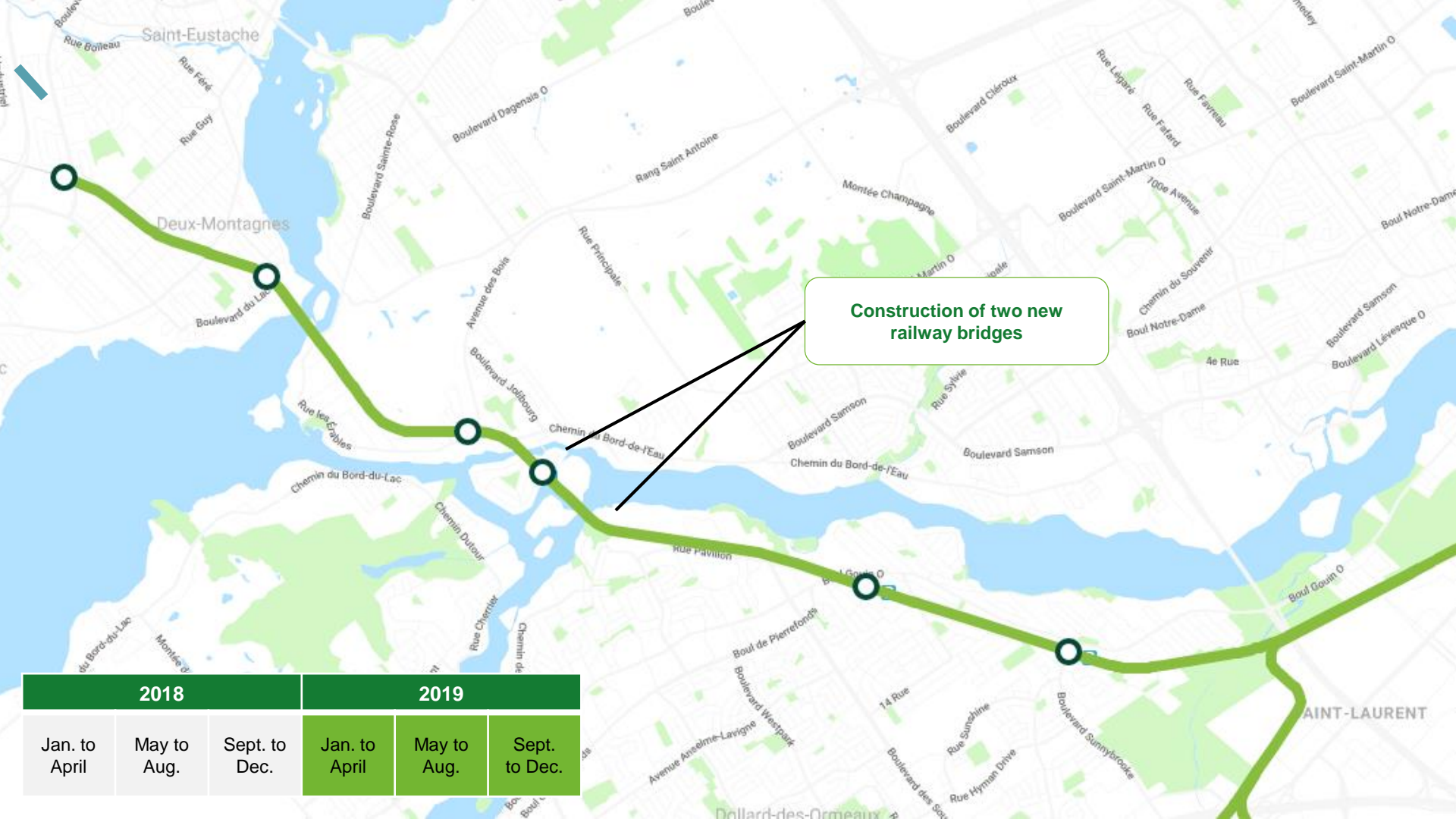
**Reconstruction of CP bridge**

**Switch installation in Mont-Royal tunnel**

**Excavation of Édouard-Montpetit Station**

**Excavation of Station McGill via McGill College Avenue**

2018			2019		
Jan. to April	May to Aug.	Sept. to Dec.	Jan. to April	May to Aug.	Sept. to Dec.



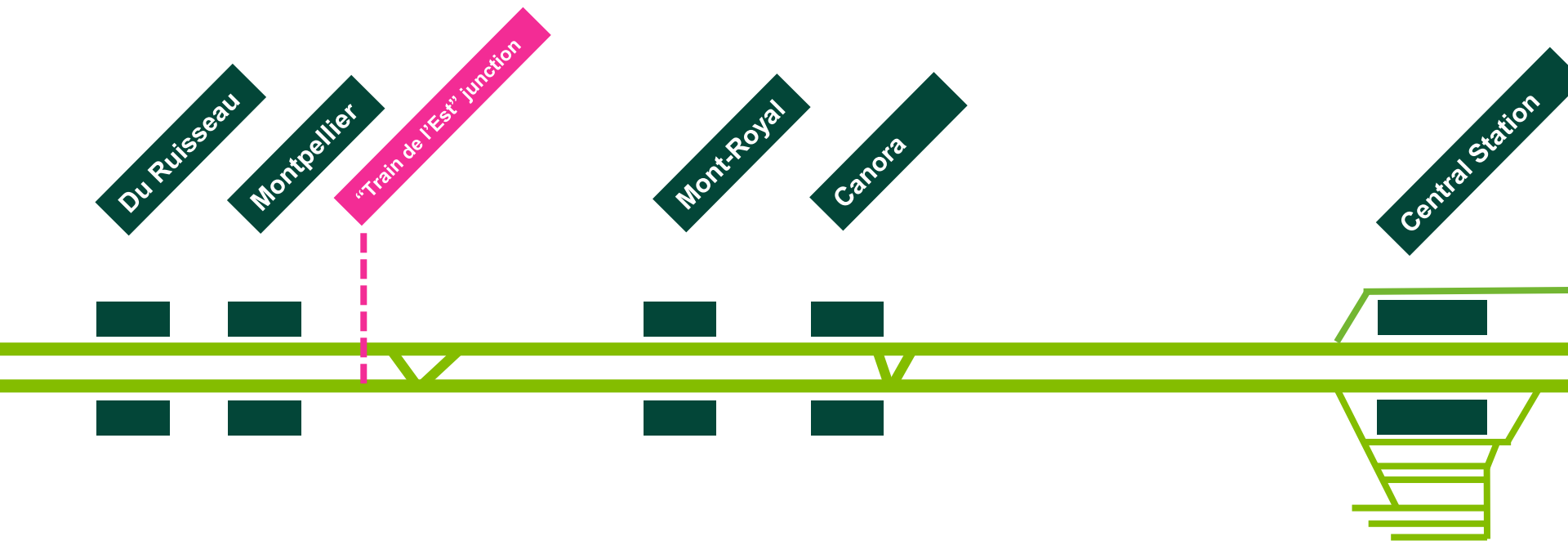
Construction of two new railway bridges

2018			2019		
Jan. to April	May to Aug.	Sept. to Dec.	Jan. to April	May to Aug.	Sept. to Dec.

April 2018

Work mainly done on weekends (Friday night to Monday morning)

**Alternative service for some stations** (Friday evening to Monday morning)

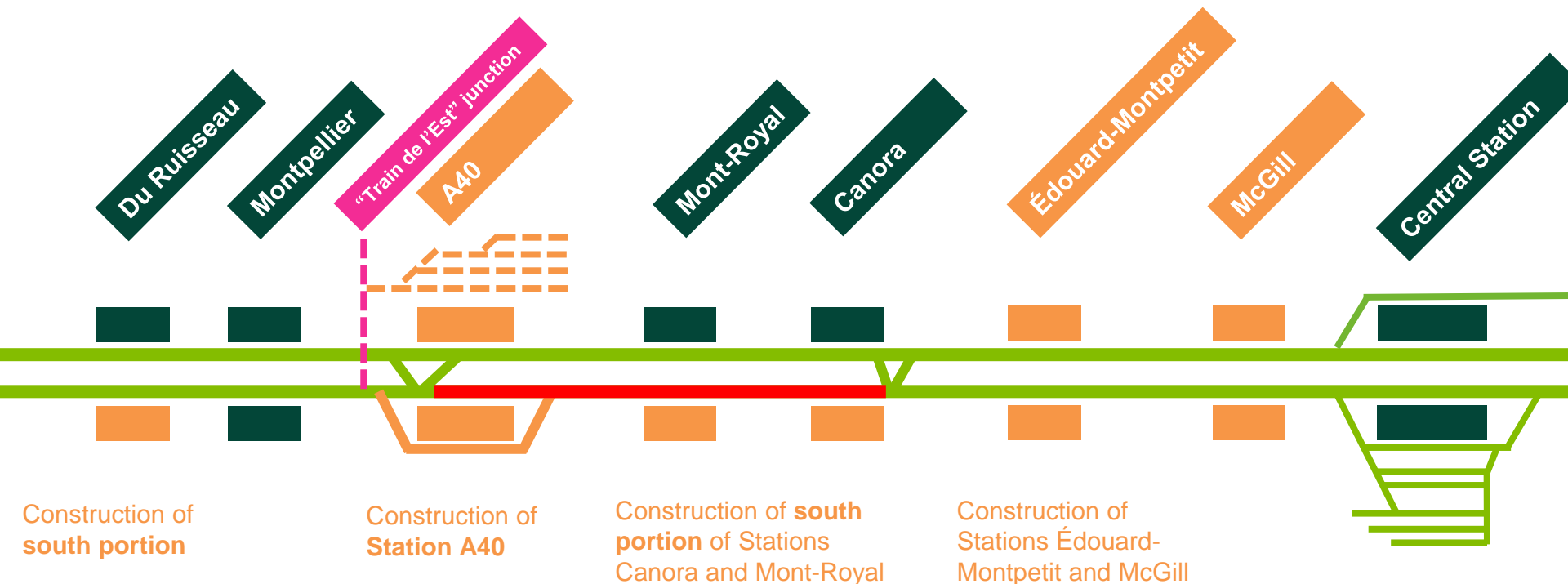


June 2018

Work during the week – south segment closed off

## Change to Deux-Montagnes and Mascouche schedules

Deux-Montagnes: two departures in the morning / one departure in the evening removed  
(from or to the stations on the Island of Montréal)



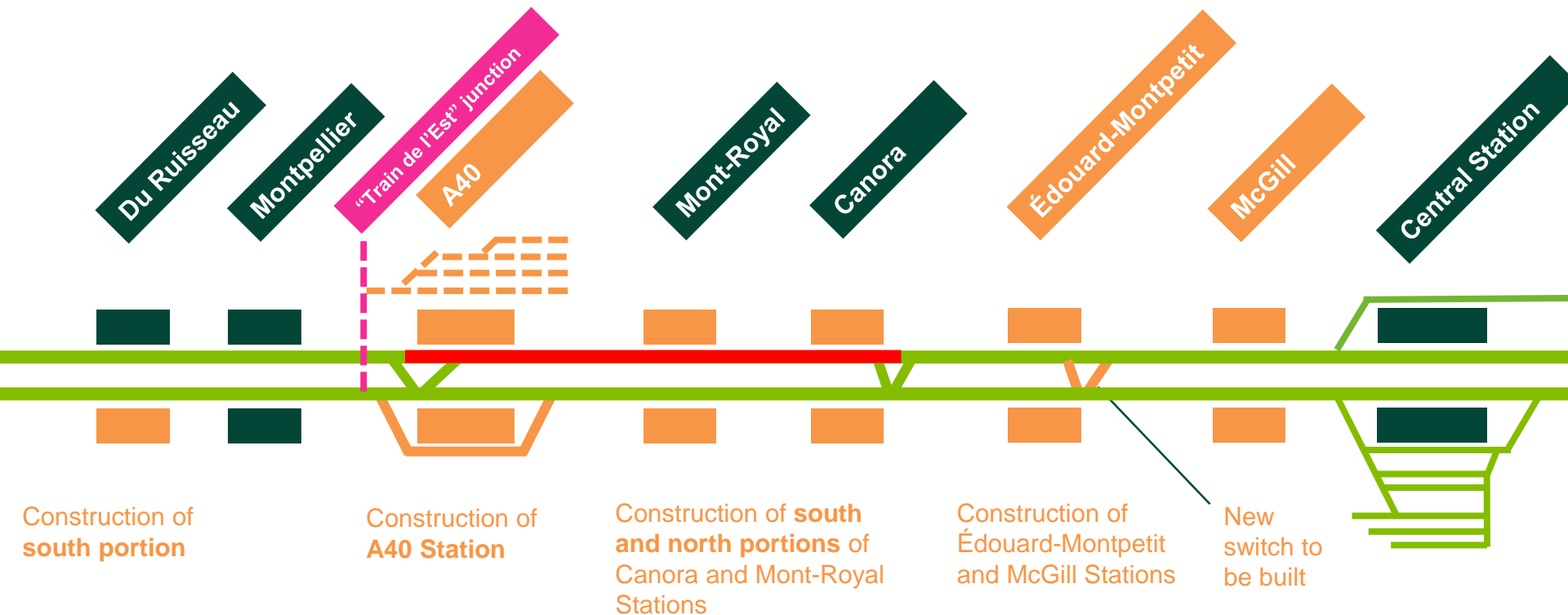


Spring 2019

## Work during the week – north segment closed off

### Change to Deux-Montagnes and Mascouche schedules

**Deux-Montagnes:** two departures in the morning / one departure in the evening removed  
(from or to the stations on the Island of Montréal)

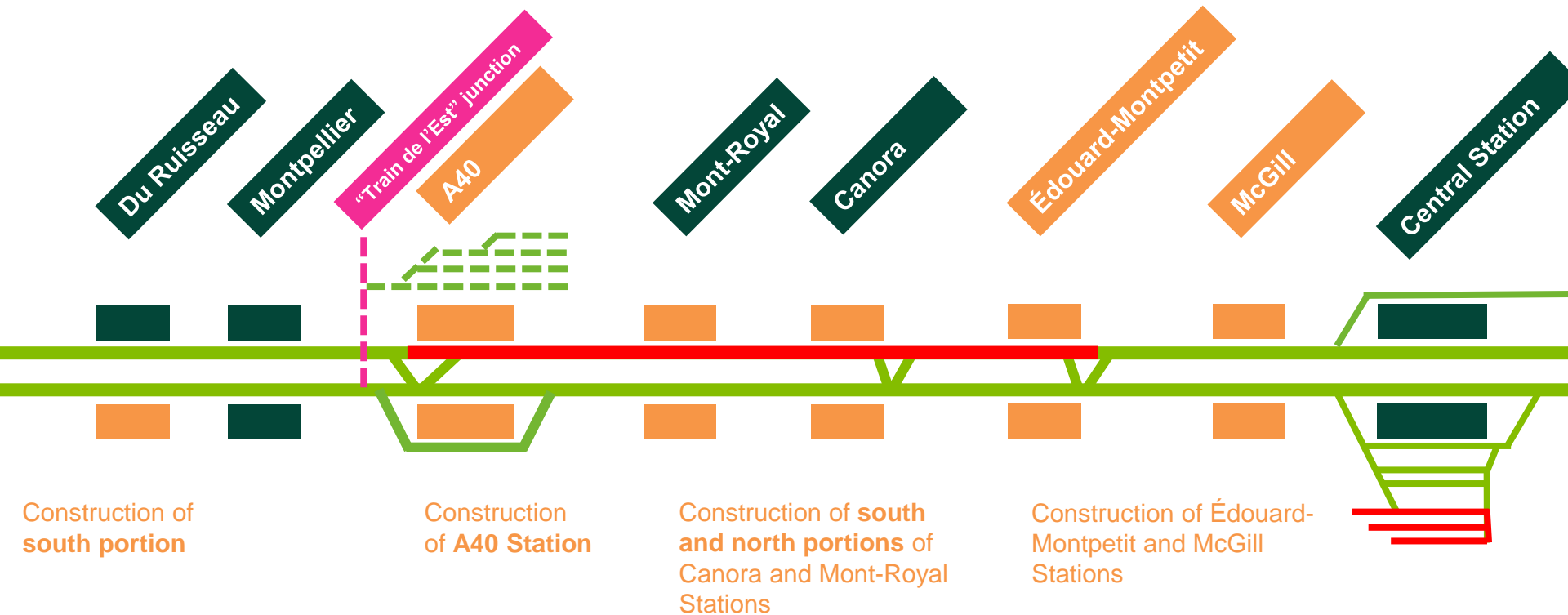


Fall 2019

Work during the week – north segment closed off (extension)

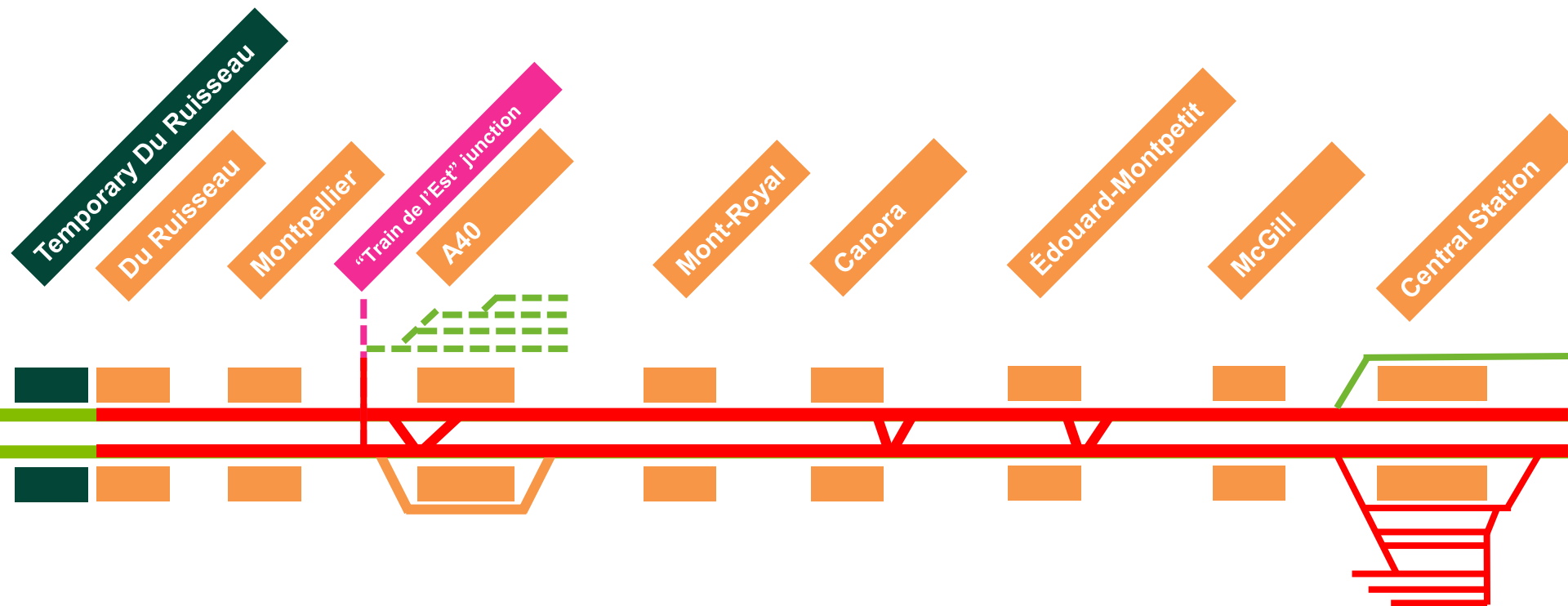
## Change to Deux-Montagnes and Mascouche schedules

**Deux-Montagnes:** two departures in the morning / one departure in the evening removed  
(from or to the stations on the Island of Montréal)



Early 2020

Intensive work – stretch from Du Ruisseau to Central Station closed off  
Alternative transit solutions required



# 4. AIRPORT AND WEST ISLAND

### Preparatory work along the entire route

- Geotechnical surveys
- Location and relocation of public and municipal services

Demolition of Doney branch

Geotechnical investigations and studies

Relocation of public utilities (Alfred-Nobel Blvd.)

Surveying

2018			2019		
Jan. to April	May to Aug.	Sept. to Dec.	Jan. to April	May to Aug.	Sept. to Dec.

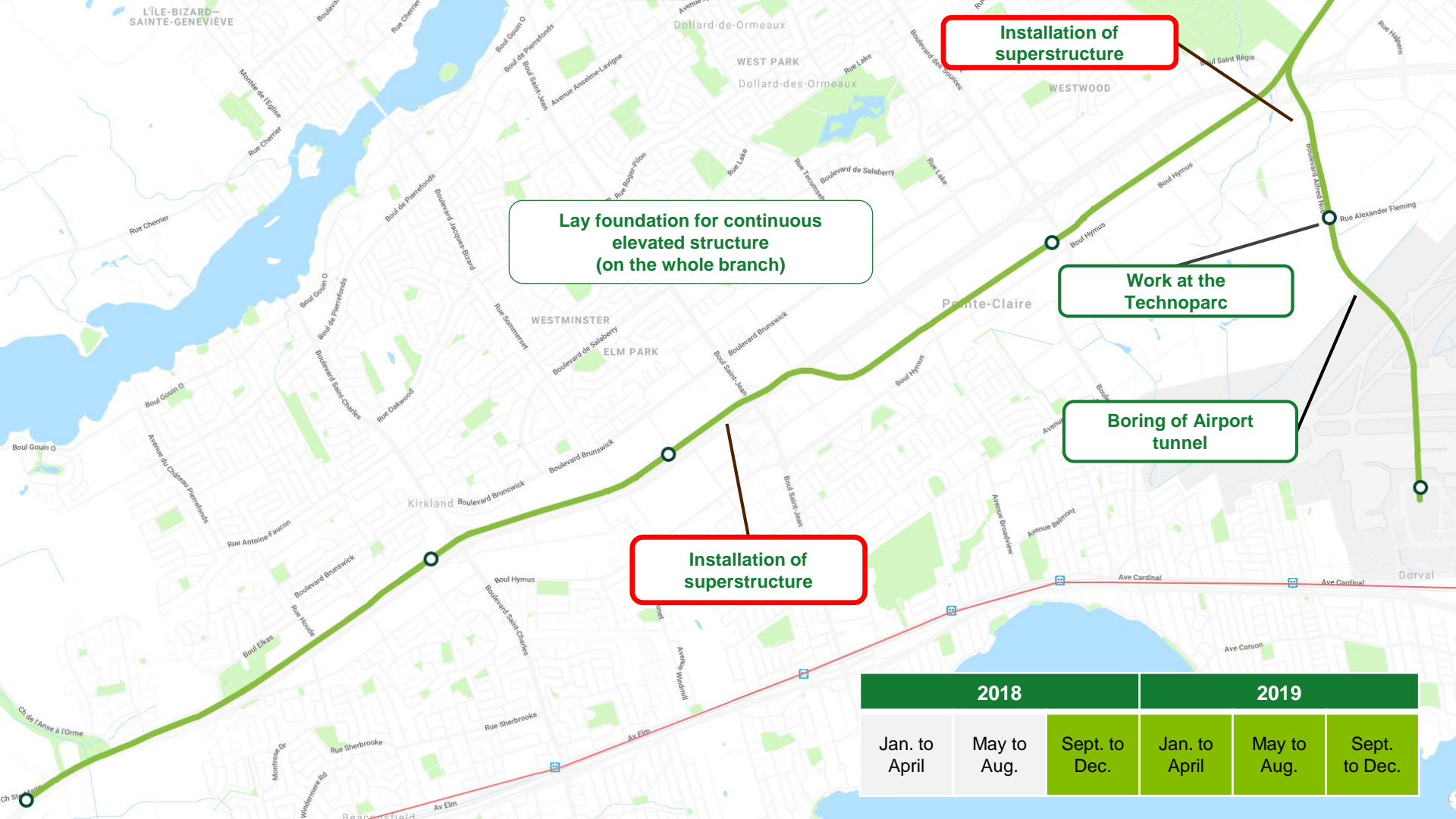
### Preparatory work along the entire route

- Geotechnical surveys
- Location and relocation of public and municipal services

Lay foundation for continuous elevated structure (on the whole branch)

Excavation at the Technoparc

2018		2019			
Jan. to April	May to Aug.	Sept. to Dec.	Jan. to April	May to Aug.	Sept. to Dec.



**Installation of superstructure**

**Lay foundation for continuous elevated structure (on the whole branch)**

**Work at the Technoparc**

**Boring of Airport tunnel**

**Installation of superstructure**

2018		2019			
Jan. to April	May to Aug.	Sept. to Dec.	Jan. to April	May to Aug.	Sept. to Dec.

# TECHNICAL DETAILS

The background features a dark green horizontal band at the top. Below it, a diagonal line separates a medium green area from a white area. At the bottom, there are three sets of parallel diagonal stripes in yellow, light green, and dark green.



## Elevated structure – prefab parts



Image for information  
purposes only

## Airport tunnel

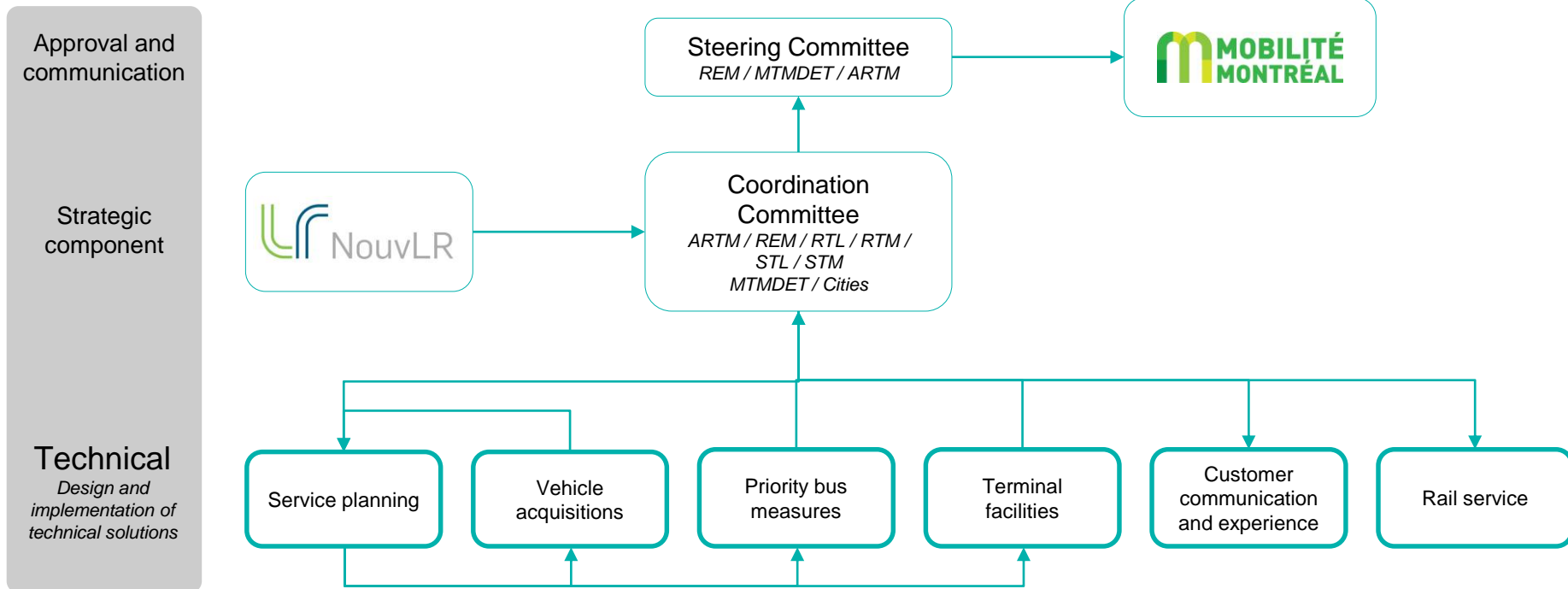


Image for information  
purposes only

# MAINTAINING MOBILITY

A decorative graphic at the bottom of the slide consisting of a series of parallel diagonal stripes in shades of green and yellow, extending from the right side towards the center.

## Process for coordinating public transit mitigation measures



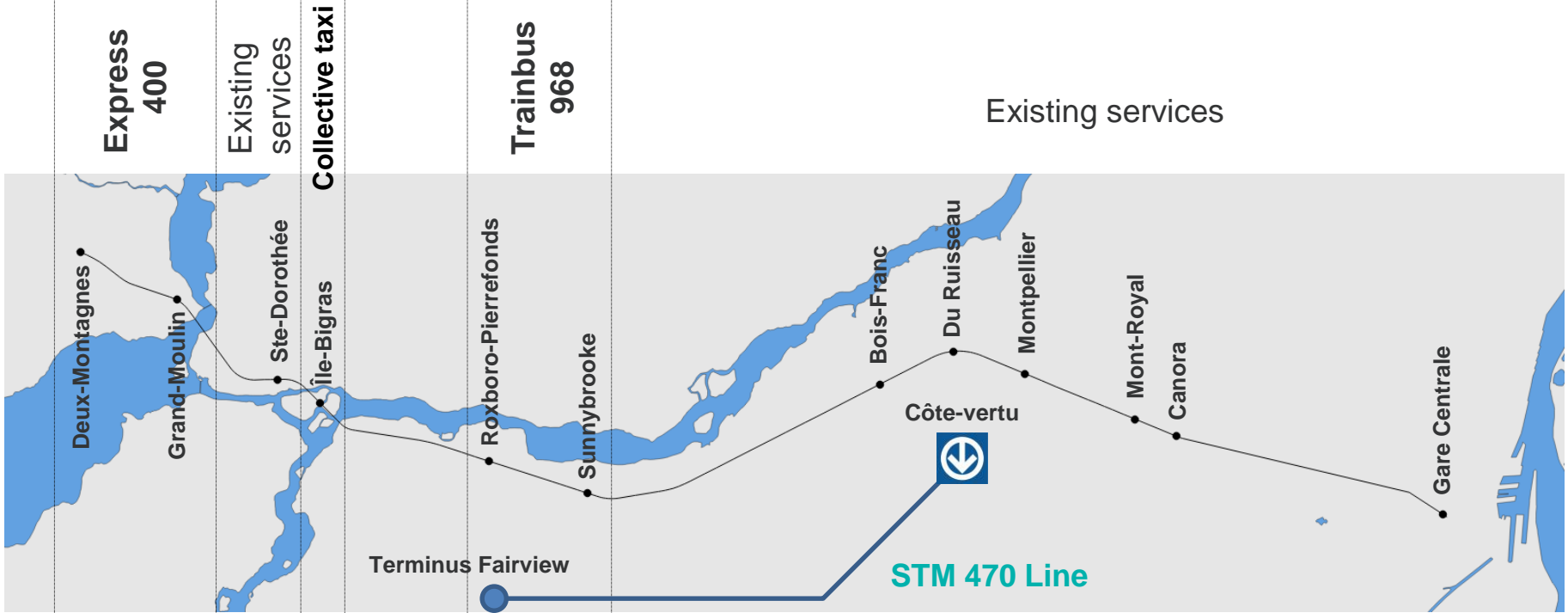
## Public transit mitigation measures for Phase 1-a (April 27, 2018)

	Description des mesures
RTM	<ul style="list-style-type: none"> <li>• <b>Express 400</b> bus “Grand-Moulin / Deux-Montagnes / Montmorency”               <ul style="list-style-type: none"> <li>• Friday evenings and weekends</li> </ul> </li> </ul>
STL	<ul style="list-style-type: none"> <li>• Addition of a collective taxi line to serve Île-Bigras train station, to line 26 and Montmorency metro station</li> </ul>
STM	<ul style="list-style-type: none"> <li>• “<b>Trainbus 968</b>” temporary shuttle between Côte-Vertu metro station and Sunnybrooke and Roxboro-Pierrefonds train stations</li> <li>• Line “<b>470 Express Pierrefonds</b>”, between Côte-Vertu metro station and Fairview Terminus</li> </ul>

These services will be offered on Friday evenings, as well as Saturdays and Sundays.  
**In addition to the existing STL and STM services in the areas of the affected stations.**

## Public transit mitigation measures for Phase 1-a (April 27, 2018)

Customer	Before	After	
A	Took the DM train Friday evening and/or on the weekend from Deux-Montagnes to downtown Montréal	RTM bus – Laurentides (or RTM shuttle) + Montmorency metro	✓
B	Took the DM train Friday evening and/or on the weekend from Laval to downtown Montréal	STL bus + Montmorency metro	✓
C	Took the DM train Friday evening and/or on the weekend from the West Island to downtown Montréal	STM bus + Côte-Vertu metro	✓
D	Took the MA train Friday evening to go back to the North Shore Took the MA train Friday evening to go back to the east part of Montréal Island	Metro + RTM bus – Les Moulins or l'Assomption  Metro + STM bus	✓



Measures description	
<b>RTM 400</b>	Serving the Deux-Montagnes and Grand-Moulin stations to the Montmorency metro station
<b>STL Collective taxi</b>	Serving Île-Bigras train station to line 26 and Montmorency metro station
<b>STM 968</b>	Serving Roxboro-Pierrefonds and Sunnybrooke train stations to Côte-Vertu metro station

## Fare measures for Phase 1-a (April 27, 2018)

	OPUS+ membership	Monthly	Occasional
Target clientele	<p><b>Holders of an annual DM and MA TRAIN pass</b></p> <p><i>Customer already has a pass</i></p>	<p><b>Holders of a monthly DM and MA TRAIN pass</b></p> <p><i>Customer already has a pass</i></p>	<p><b>Occasional DM or MA train users (weekend)</b></p> <p><i>Customer has not yet purchased a pass</i></p>
Solution	<p><b>“TRAM 8 multi-month unlimited weekend”</b> pass valid until September 30 at no additional cost on a chip card</p>		<p><b>“TRAM 8 unlimited weekend”</b> pass valid for one weekend only on an occasional chip card (\$13.75)</p>



NEXT STEPS



## Approach with the public

**Objective: Regularly and proactively provide complete information before the work**

- Community Relations Office in place and in the field as of May 2018

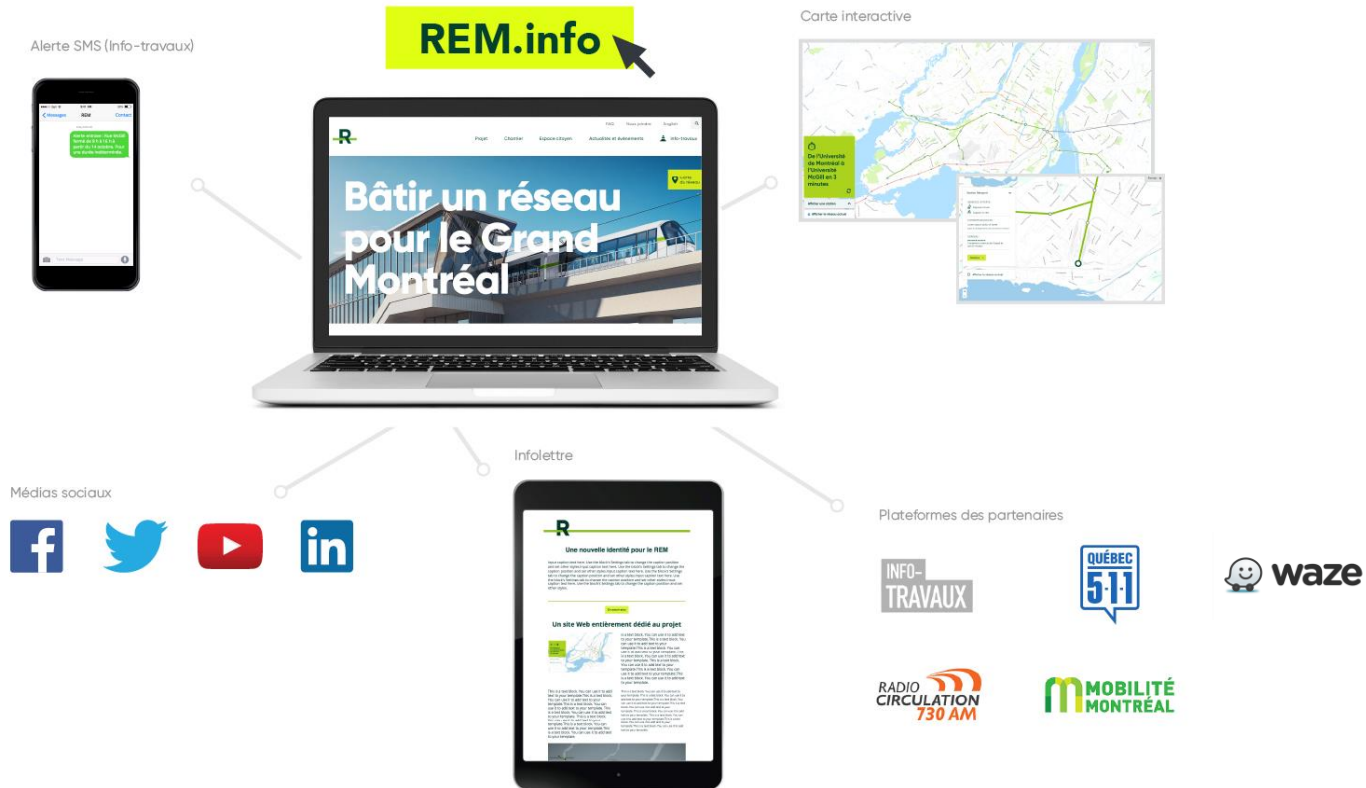
**For residents affected by the work:**

- Neighbourhood campaigns to inform residents affected by the upcoming work
- Targeted meetings
- Neighbourhood committees

**For public transit users:**

- Information campaign

**Ongoing public information activities**



## Solutions for the Deux-Montagnes line

# Innovation forum with mobility partners

FALL 2018

Focus groups to find solutions

---

**Objective:** Find innovative solutions together with all the actors concerned